



KSI Research

KIWOOM
SEKURITAS INDONESIA

Technical Recommendation

Jakarta Composite Index Range Today

7,150 – 7,120 / 7,000

Support

7,190 – 7,240

Resistance

Published on 16 June 2025



Jakarta Composite Index

JCI tested the MA10 Support at a Low of 7,149.6 in Friday's trading session (13/06/25), slipping 38.3 pts / - 0.53% to the level of 7,166.06. **KIWOOM RESEARCH** estimates that the 7,150 Support level will again be at stake today, where if it is breached, JCI must rely on the next Support = MA20 / 7,120. If JCI's decline can be held and does not break below the psychological level of 7,000, then this sideways trend might be prevented from confirming a (bearish reversal) DOUBLE TOP pattern. The most appropriate action for now is Wait & See and gradual portfolio liquidation, while monitoring sector rotation that is still expected to receive positive catalysts from market turbulence.

ADVICE: WAIT & SEE; SELL ON STRENGTH (Partial); sell more when MA10 & MA20 Support levels are breached.



AKRA

AKR Corporindo Tbk.



(AKRA). Price is still moving in an uptrend and has the potential to test the nearest resistance. The strengthening is supported by bullish stochastic indicator, MACD line has the potential for a golden cross (histogram moving into positive area) and increasing volume.

ADVICE: Trading buy or if correction occurs, can buy on weakness in the support area / gap area at 1,285.

Entry Buy	Target Price	Support	Cut Loss
1,270 – 1,315	1,370 – 1,425	1,250 – 1,270	1,240



ENRG

Energi Mega Persada Tbk.



(ENRG). Price successfully broke resistance. The strengthening is supported by bullish stochastic indicator, MACD line remains bullish (histogram moving positively) and increasing volume.

ADVICE: Trading buy and buy on weakness if pullback occurs.

Entry Buy	Target Price	Support	Cut Loss
264 – 274	286 – 298	260 – 264	256



FILM

MD Entertainment Tbk.



(FILM). Price broke the nearest resistance and returned to an uptrend in a minor trend. The strengthening is supported by bullish stochastic indicator, MACD line golden cross (histogram moving positively) and increasing volume.

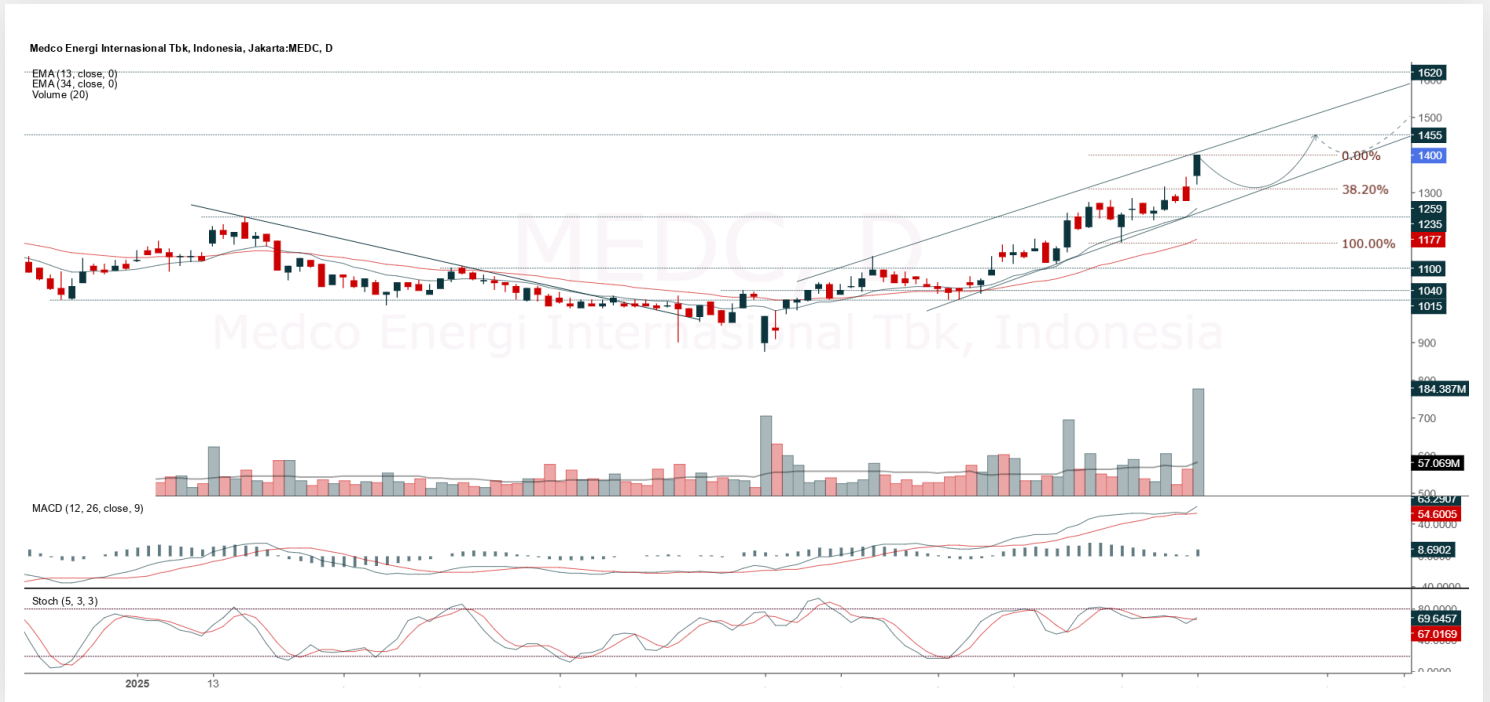
ADVICE: Trading buy and accumulation buy.

Entry Buy	Target Price	Support	Cut Loss
2,620 – 2,720	2,840 – 2,960	2,570 – 2,620	2,550



MEDC

Medco Energi Internasional Tbk.



(MEDC). Price closed with a rally and is currently in an uptrend condition. The strengthening is supported by stochastic indicator returning to golden cross, MACD line remains bullish (histogram moving positively) and significantly increasing volume.

ADVICE: Trading buy and buy on weakness if correction occurs first.

Entry Buy	Target Price	Support	Cut Loss
1,350 – 1,400	1,460 – 1,520	1,325 – 1,350	1,315



Forecast – Technical Analysis

Ticker	MA5	RSI Rec	MACD Trend	Recomm,	Pivot Point	Support 1	Support 2	Resistance 1	Resistance 2	Stop Loss Level
JCI	Negative	Overbought	Negative	Strong Sell	7,175	7,150	7,125	7,200	7,225	7,025
ACES	Positive	Trading	Negative	Hold	540	530	525	545	555	515
ADMR	Positive	Trading	Negative	Hold	990	970	960	1,000	1,020	945
ADRO	Positive	Trading	Negative	Hold	1,985	1,940	1,905	2,020	2,065	1,875
AKRA	Negative	Trading	Negative	Sell	1,325	1,300	1,290	1,335	1,360	1,270
AMMN	Negative	Overbought	Positive	Sell	8,200	8,100	7,950	8,350	8,450	7,825
AMRT	Positive	Trading	Negative	Hold	2,460	2,425	2,380	2,505	2,540	2,340
ANTM	Positive	Overbought	Negative	Sell	3,290	3,235	3,190	3,335	3,390	3,140
ARTO	Negative	Trading	Negative	Sell	1,755	1,735	1,700	1,790	1,810	1,675
ASII	Positive	Trading	Negative	Hold	4,580	4,555	4,540	4,595	4,620	4,470
BBCA	Negative	Trading	Negative	Sell	9,050	9,000	8,900	9,150	9,200	8,775
BBNI	Negative	Trading	Positive	Hold	4,505	4,465	4,415	4,555	4,595	4,345
BBRI	Positive	Trading	Negative	Hold	4,015	3,975	3,945	4,045	4,085	3,885
BBTN	Positive	Trading	Negative	Hold	1,165	1,155	1,140	1,180	1,190	1,125
BMRI	Negative	Trading	Negative	Sell	5,175	5,100	5,025	5,250	5,325	4,945
BRIS	Negative	Oversold	Negative	Spec. Buy	2,590	2,575	2,550	2,615	2,630	2,510
BRPT	Negative	Strong Sell	Positive	Sell	1,495	1,460	1,425	1,530	1,565	1,400
CPIN	Positive	Trading	Negative	Hold	4,925	4,880	4,815	4,990	5,025	4,745
CTRA	Negative	Trading	Negative	Sell	990	960	940	1,010	1,040	925
ESSA	Negative	Trading	Positive	Hold	615	585	555	645	675	545
EXCL	Negative	Trading	Positive	Hold	2,190	2,170	2,150	2,210	2,230	2,120
GOTO	Negative	Oversold	Positive	Spec. Buy	66	64	63	67	69	62
ICBP	Positive	Trading	Negative	Hold	10,650	10,550	10,475	10,725	10,825	10,300
INCO	Positive	Trading	Negative	Hold	3,465	3,400	3,365	3,500	3,565	3,315
INDF	Negative	Trading	Positive	Hold	8,325	8,200	8,100	8,425	8,550	7,975
INKP	Positive	Trading	Negative	Hold	6,325	6,200	6,025	6,500	6,625	5,950
ISAT	Negative	Trading	Negative	Sell	2,085	2,060	2,045	2,100	2,125	2,015
ITMG	Negative	Trading	Positive	Hold	22,825	22,700	22,550	22,975	23,100	22,200
JPFA	Negative	Oversold	Positive	Spec. Buy	1,585	1,575	1,565	1,595	1,605	1,540
JSMR	Negative	Trading	Negative	Sell	3,820	3,790	3,750	3,860	3,890	3,695
KLBF	Positive	Trading	Negative	Hold	1,530	1,510	1,485	1,555	1,575	1,465
MAPA	Positive	Trading	Negative	Hold	670	655	640	685	700	630
MAPI	Positive	Trading	Negative	Hold	1,255	1,245	1,210	1,290	1,300	1,195
MBMA	Negative	Overbought	Positive	Sell	460	444	434	470	486	427
MDKA	Positive	Overbought	Positive	Hold	2,245	2,190	2,155	2,280	2,335	2,125
MEDC	Negative	Strong Sell	Positive	Sell	1,365	1,335	1,285	1,415	1,445	1,265
PGAS	Positive	Trading	Negative	Hold	1,680	1,660	1,640	1,700	1,720	1,615
PGEO	Negative	Overbought	Positive	Sell	1,445	1,420	1,385	1,480	1,505	1,365
PTBA	Negative	Overbought	Positive	Sell	2,975	2,955	2,935	2,995	3,015	2,890
SIDO	Negative	Oversold	Negative	Spec. Buy	510	505	505	510	515	495
SMGR	Negative	Overbought	Positive	Sell	2,915	2,765	2,675	3,005	3,155	2,630
SMRA	Negative	Trading	Negative	Sell	415	408	399	424	431	393
TLKM	Positive	Trading	Negative	Hold	2,750	2,730	2,700	2,780	2,800	2,660
TOWR	Positive	Trading	Negative	Hold	540	530	525	545	555	515
UNTR	Negative	Trading	Positive	Hold	21,825	21,625	21,400	22,050	22,250	21,075
UNVR	Positive	Oversold	Negative	Spec. Buy	1,590	1,555	1,510	1,635	1,670	1,485



Kiwoom Research Team



HEAD OFFICE

Treasury Tower 27th Floor Unit A, District 8 Kawasan SCBD Lot 28,
Jl.Jend.Sudirman Kav 52-53, Jakarta Selatan 12190

Tel : (021) 5010 5800

Fax : (021) 5010 5820

Email : cs@kiwoom.co.id

PT Kiwoom Sekuritas Indonesia is licensed and supervised by the Financial Services Authority (OJK)

OTHER DISCLOSURES

All Kiwoom's research reports made available to clients are simultaneously available on our own website <http://www.kiwoom.co.id/>. Not all research content is redistributed, e-mailed or made available to third-party aggregators. For all research reports available on a particular stock, please contact your sales representative. Any data discrepancies in this report could be the result of different calculations and/or adjustments.

DISCLAIMER

This report has been prepared and issued by PT Kiwoom Sekuritas Indonesia. Information has been obtained from sources believed to be reliable but Kiwoom Securities do not warrant its completeness or accuracy. Forward-looking information or statements in this report contain information that is based on forecast of future results, estimates of amounts not yet determinable, assumptions, and therefore involve known and unknown risks and uncertainties which may cause the actual results, performance or achievements of their subject matter to be materially different from current expectations. To the fullest extent allowed by law, PT Kiwoom Sekuritas Indonesia shall not be liable for any direct, indirect or consequential losses, loss of profits, damages, costs or expenses incurred or suffered by any person or organization arising from reliance on or use of any information contained on this report. The information that we provide should not be construed in any manner whatsoever as, personalized advice. No mention of a particular security in this report constitutes a recommendation to buy, sell or hold that or any security, or that any particular security, portfolio of securities, transaction or investment strategy is suitable for any specific person. This report is being supplied to you solely for your information and may not be reproduced by, further distributed to or published in whole or in part by, any other person.