



KSI Research

KIWOOM
SEKURITAS INDONESIA

Technical Recommendation

Jakarta Composite Index Range Today

7,130 – 7,120 / 7,000 **7,181 / 7,240**
Support Resistance

Published on 18 June 2025



Jakarta Composite Index

JCI recorded a gain of 38.26pts / +0.54% to 7,155.85, where the high point touched 7,181 but was beaten down by the long term trendline resistance. Despite being back above the crucial Moving Averages, the fact that MA10 & MA20 have dead crossed will still hold short term bearish potential to the psychological level of 7,000. Considering the current level of global uncertainty and JCI's position that is stuck at a fragile high with all the combination of regional + domestic sentiment. **KIWOOM RESEARCH** recommends HOLD position; WAIT & SEE and keep strict Trailing Stop limit to prevent floating gain from collapsing.

ADVICE: HOLD; WAIT & SEE, set your Trailing Stop.



AMMN

Amman Mineral Internasional Tbk.



(AMMN). Price successfully rebounded after touching a strong support and has the potential to return to an uptrend. The bullish move is supported by the MACD line which remains in a bullish condition (histogram moving in the positive area) and increasing volume trend.

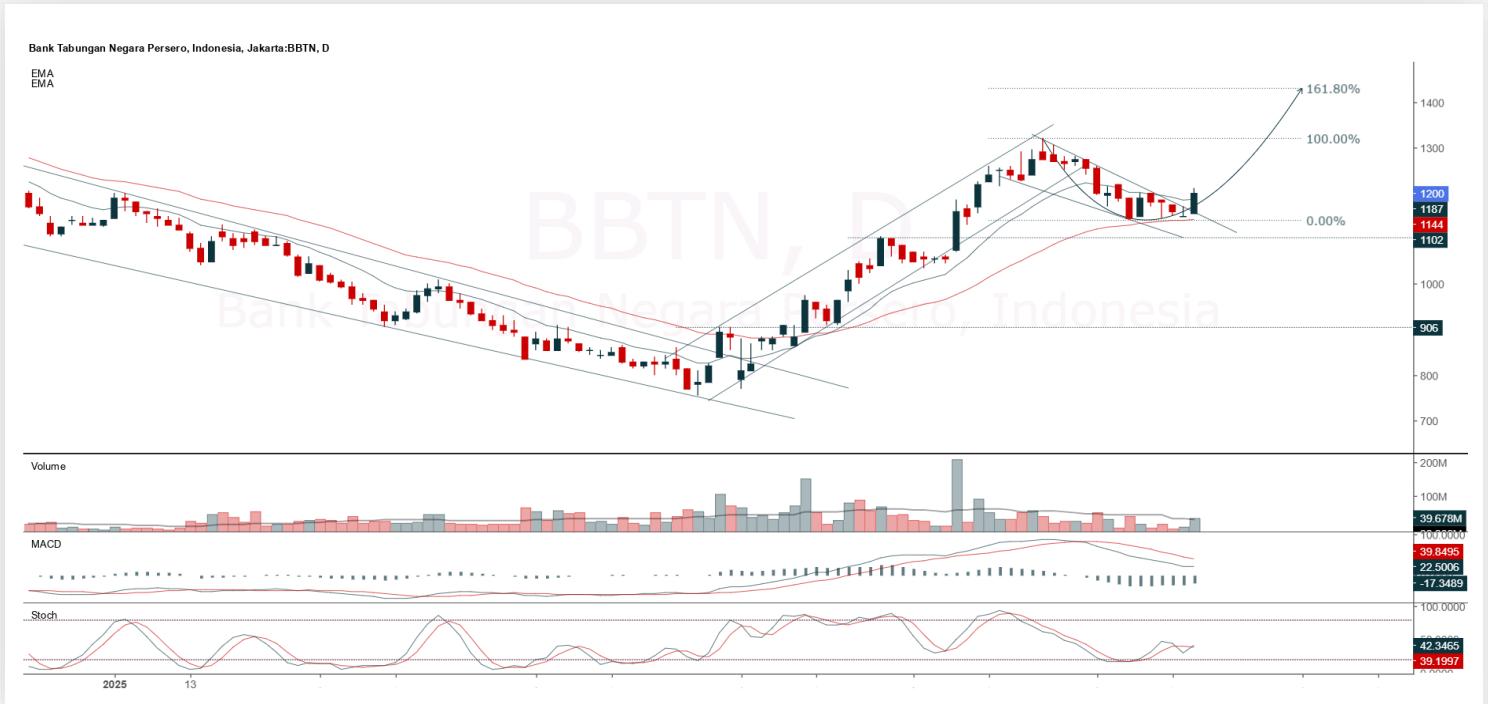
ADVICE: Trading buy or accumulation buy.

Entry Buy	Target Price	Support	Cut Loss
7,850 – 8,125	8,450 – 8,775	7,725 – 7,850	7,675



BBTN

Bank Tabungan Negara (Persero) Tbk.



(BBTN). Price formed another swing low after holding at the dynamic support area. The bullish move is supported by a Stochastic golden cross, MACD histogram moving back into the positive area, and increasing volume.

ADVICE: Trading buy or accumulation buy.

Entry Buy	Target Price	Support	Cut Loss
1,160 – 1,200	1,250 – 1,300	1,140 – 1,160	1,130



SCMA

Surya Citra Media Tbk.



(SCMA). Price formed another swing and has the potential to form a double bottom pattern. The bullish move is supported by a Stochastic golden cross, MACD line golden cross (histogram moving positive), and increasing volume.

ADVICE: Trading buy or accumulation buy.

Entry Buy	Target Price	Support	Cut Loss
162 – 168	175 – 182	159 – 162	157



Forecast – Technical Analysis

Ticker	MA5	RSI Rec	MACD Trend	Recomm,	Pivot Point	Support 1	Support 2	Resistance 1	Resistance 2	Stop Loss Level
JCI	Positive	Trading	Negative	Hold	7,150	7,150	7,125	7,175	7,200	7,025
ACES	Positive	Trading	Negative	Hold	540	525	520	545	560	510
ADMIR	Negative	Trading	Negative	Sell	1,020	1,005	995	1,030	1,045	980
ADRO	Positive	Trading	Negative	Hold	2,015	1,995	1,975	2,035	2,055	1,945
AKRA	Negative	Trading	Negative	Sell	1,285	1,270	1,250	1,305	1,320	1,230
AMMN	Negative	Overbought	Positive	Sell	7,900	7,625	7,300	8,225	8,500	7,200
AMRT	Positive	Trading	Negative	Hold	2,360	2,265	2,180	2,445	2,540	2,145
ANTM	Negative	Overbought	Negative	Strong Sell	3,370	3,250	3,120	3,500	3,620	3,075
ARTO	Positive	Trading	Negative	Hold	1,725	1,705	1,685	1,745	1,765	1,660
ASII	Positive	Trading	Negative	Hold	4,620	4,595	4,570	4,645	4,670	4,500
BBCA	Positive	Trading	Negative	Hold	9,025	8,975	8,900	9,100	9,150	8,775
BBNI	Positive	Trading	Negative	Hold	4,385	4,345	4,315	4,415	4,455	4,250
BBRI	Positive	Trading	Negative	Hold	3,990	3,950	3,920	4,020	4,060	3,860
BBTN	Positive	Trading	Negative	Hold	1,180	1,145	1,115	1,210	1,245	1,095
BMRI	Positive	Trading	Negative	Hold	5,150	5,075	5,025	5,200	5,275	4,950
BRIS	Negative	Trading	Negative	Sell	2,660	2,565	2,530	2,695	2,790	2,490
BRPT	Negative	Overbought	Positive	Sell	1,565	1,500	1,450	1,615	1,680	1,430
CPIN	Negative	Trading	Negative	Sell	4,825	4,790	4,745	4,870	4,905	4,675
CTRA	Positive	Trading	Negative	Hold	980	950	925	1,005	1,035	910
ESSA	Negative	Trading	Positive	Hold	615	600	585	630	645	575
EXCL	Negative	Trading	Positive	Hold	2,235	2,205	2,185	2,255	2,285	2,150
GOTO	Positive	Oversold	Positive	Buy	64	63	62	65	66	61
ICBP	Positive	Trading	Negative	Hold	10,625	10,525	10,475	10,675	10,775	10,325
INCO	Negative	Overbought	Negative	Strong Sell	3,625	3,585	3,525	3,685	3,725	3,470
INDF	Negative	Trading	Positive	Hold	8,275	8,175	8,125	8,325	8,425	8,000
INKP	Positive	Trading	Negative	Hold	6,225	6,150	6,075	6,300	6,375	5,975
ISAT	Positive	Trading	Negative	Hold	2,095	2,080	2,065	2,110	2,125	2,035
ITMG	Negative	Overbought	Positive	Sell	23,525	23,250	23,000	23,775	24,050	22,650
JPFA	Positive	Oversold	Positive	Buy	1,565	1,530	1,515	1,580	1,615	1,490
JSMR	Negative	Trading	Positive	Hold	3,845	3,805	3,785	3,865	3,905	3,725
KLBF	Positive	Overbought	Negative	Sell	1,555	1,515	1,465	1,605	1,645	1,440
MAPA	Positive	Trading	Negative	Hold	670	660	655	675	685	645
MAPI	Positive	Oversold	Negative	Spec. Buy	1,225	1,210	1,200	1,235	1,250	1,180
MBMA	Negative	Overbought	Positive	Sell	460	452	444	468	476	437
MDKA	Negative	Overbought	Negative	Strong Sell	2,235	2,200	2,165	2,270	2,305	2,135
MEDC	Negative	Overbought	Positive	Sell	1,385	1,360	1,315	1,430	1,455	1,295
PGAS	Positive	Trading	Negative	Hold	1,690	1,680	1,655	1,715	1,725	1,630
PGEO	Negative	Overbought	Positive	Sell	1,600	1,550	1,490	1,660	1,710	1,465
PTBA	Negative	Overbought	Positive	Sell	3,020	3,005	2,990	3,035	3,050	2,945
SIDO	Positive	Oversold	Negative	Spec. Buy	505	498	494	510	515	486
SMGR	Negative	Overbought	Positive	Sell	2,900	2,845	2,800	2,945	3,000	2,755
SMRA	Positive	Trading	Negative	Hold	406	403	400	409	412	394
TLKM	Positive	Trading	Negative	Hold	2,780	2,760	2,740	2,800	2,820	2,700
TOWR	Negative	Trading	Negative	Sell	530	525	515	540	545	510
UNTR	Negative	Trading	Positive	Hold	22,000	21,850	21,700	22,150	22,300	21,375
UNVR	Positive	Oversold	Negative	Spec. Buy	1,485	1,475	1,450	1,510	1,520	1,430



Kiwoom Research Team



HEAD OFFICE

Treasury Tower 27th Floor Unit A, District 8 Kawasan SCBD Lot 28,
Jl.Jend.Sudirman Kav 52-53, Jakarta Selatan 12190

Tel : (021) 5010 5800
Fax : (021) 5010 5820
Email : cs@kiwoom.co.id

PT Kiwoom Sekuritas Indonesia is licensed and supervised by the Financial Services Authority (OJK)

OTHER DISCLOSURES

All Kiwoom's research reports made available to clients are simultaneously available on our own website <http://www.kiwoom.co.id/>. Not all research content is redistributed, e-mailed or made available to third-party aggregators. For all research reports available on a particular stock, please contact your sales representative. Any data discrepancies in this report could be the result of different calculations and/or adjustments.

DISCLAIMER

This report has been prepared and issued by PT Kiwoom Sekuritas Indonesia. Information has been obtained from sources believed to be reliable but Kiwoom Securities do not warrant its completeness or accuracy. Forward-looking information or statements in this report contain information that is based on forecast of future results, estimates of amounts not yet determinable, assumptions, and therefore involve known and unknown risks and uncertainties which may cause the actual results, performance or achievements of their subject matter to be materially different from current expectations. To the fullest extent allowed by law, PT Kiwoom Sekuritas Indonesia shall not be liable for any direct, indirect or consequential losses, loss of profits, damages, costs or expenses incurred or suffered by any person or organization arising from reliance on or use of any information contained on this report. The information that we provide should not be construed in any manner whatsoever as, personalized advice. No mention of a particular security in this report constitutes a recommendation to buy, sell or hold that or any security, or that any particular security, portfolio of securities, transaction or investment strategy is suitable for any specific person. This report is being supplied to you solely for your information and may not be reproduced by, further distributed to or published in whole or in part by, any other person.