



KSI Research

**KIWOOM**  
SEKURITAS INDONESIA

# Technical Recommendation

Jakarta Composite Index Range Today

**7,090 / 7,000**  
Support

**7,150 – 7,170 / 7,240**  
Resistance

Published on 19 June 2025



## Jakarta Composite Index

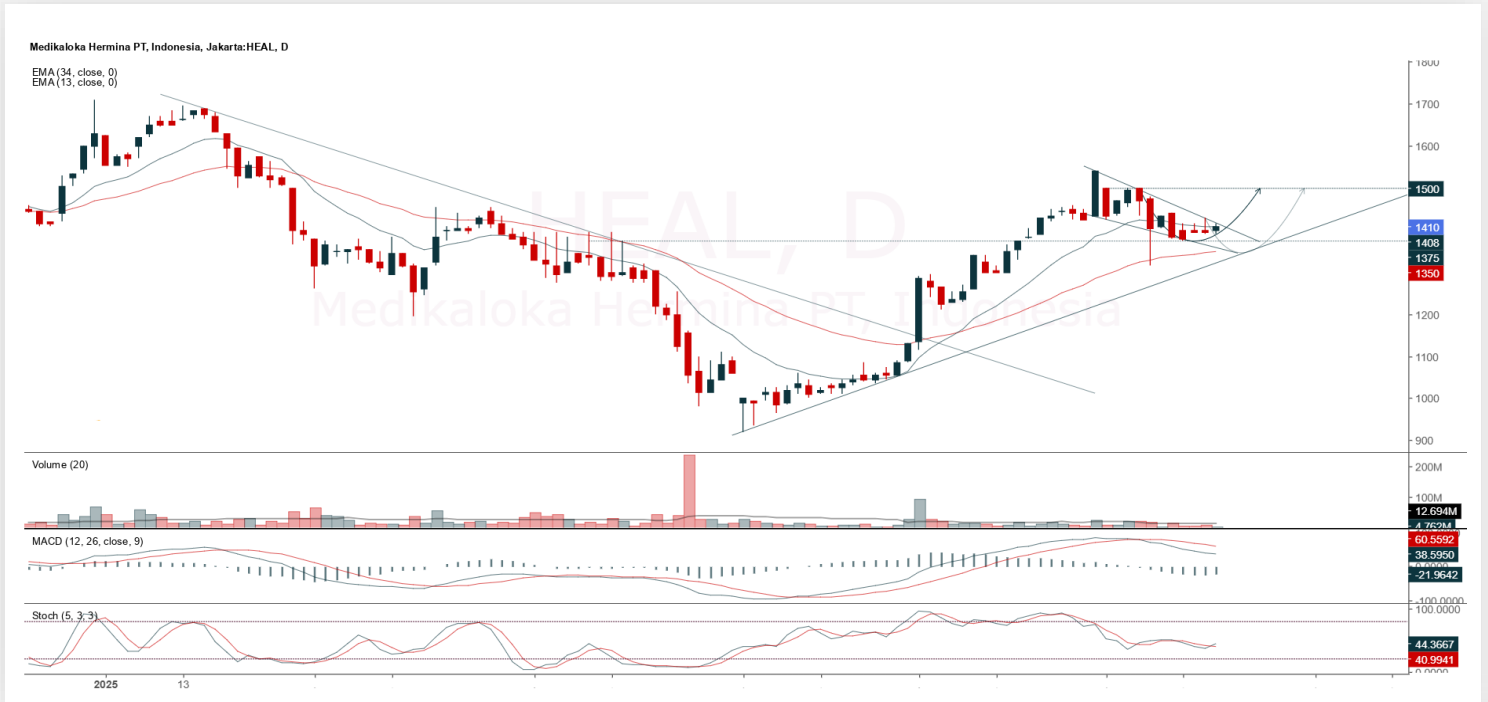
JCI weakened by 48 pts / -0.67% to the level of 7,107.79, accompanied by a Foreign Net Sell of IDR 646.38 billion. Rupiah exchange rate slightly wobbled around 16,310 / USD. **KIWOOM RESEARCH** considers this phenomenon a firmer confirmation of the recommendation to reduce portfolios, as the Trailing Stop once again broke below key Support: the MA10 & MA20 range as the nearest line of defense. The threat of further consolidation can be neutralized if JCI manages to close back above the 7,150 level.

**ADVICE:** REDUCE POSITION, HOLD, WAIT & SEE.



## HEAL

Medikaloka Hermina Tbk.



**(HEAL).** Price closed with a rebound and is currently testing the short-term trendline resistance. The bullish movement is supported by a stochastic golden cross indicator and a positive MACD histogram.

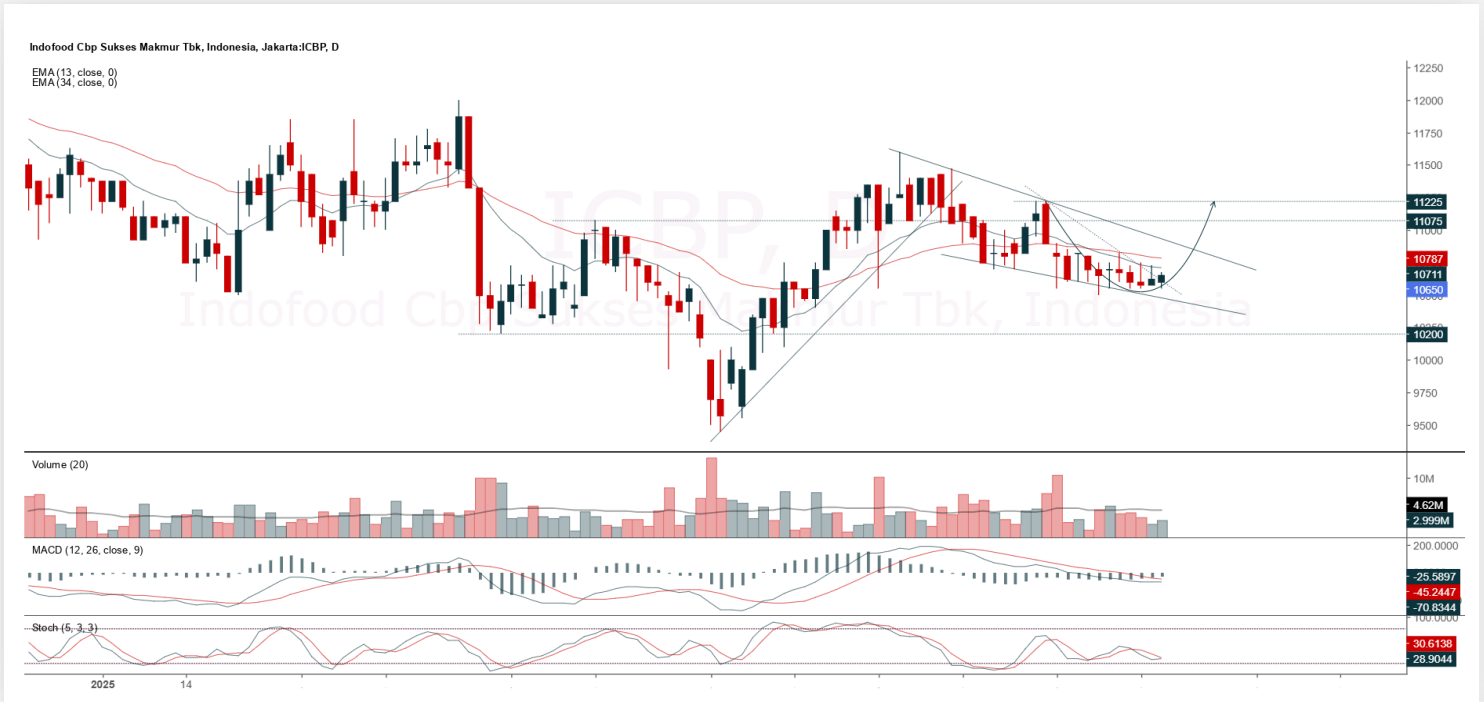
**ADVICE:** Accumulate buy or if it corrects, buy on weakness at the support area.

Entry Buy	Target Price	Support	Cut Loss
1,360 – 1,410	1,470 – 1,530	1,335 – 1,360	1,325



## ICBP

Indofood CBP Sukses Makmur Tbk.



**(ICBP).** Price is moving bullish and still in a sideways area. The bullish movement is supported by a stochastic beginning to golden cross and the MACD histogram moving into the positive area along with increasing volume.

**ADVICE:** Trading buy and accumulate buy.

Entry Buy	Target Price	Support	Cut Loss
10,275 – 10,650	11,075 – 11,500	10,100 – 10,275	10,050



## INDY

Indika Energy Tbk.



**(INDY).** Price experienced a reversal after touching the support area. The bullish movement is supported by a MACD line golden cross (with a positive-moving histogram).

**ADVICE:** Trading buy or accumulate buy.

Entry Buy	Target Price	Support	Cut Loss
1,475 – 1,530	1,600 – 1,665	1,445 – 1,475	1,435



## MAPI

Mitra Adiperkasa Tbk.



**(MAPI).** Price successfully reversed after touching the support area or gap area. The bullish movement is supported by a stochastic golden cross again (bullish divergence pattern), MACD line has the potential for a golden cross (histogram moving into the positive area), and volume is starting to increase.

**ADVICE:** Trading buy or accumulate buy.

Entry Buy	Target Price	Support	Cut Loss
1,200 – 1,245	1,295 – 1,345	1,180 – 1,200	1,170

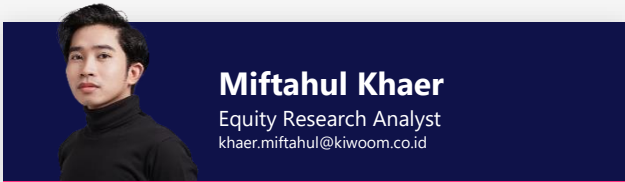


## Forecast – Technical Analysis

Ticker	MA5	RSI Rec	MACD Trend	Recomm,	Pivot Point	Support 1	Support 2	Resistance 1	Resistance 2	Stop Loss Level
JCI	Positive	Trading	Negative	Hold	7,125	7,100	7,050	7,175	7,200	6,950
ACES	Positive	Trading	Negative	Hold	545	535	530	550	560	520
ADMR	Positive	Trading	Negative	Hold	1,020	1,005	975	1,050	1,065	960
ADRO	Positive	Trading	Negative	Hold	1,995	1,980	1,960	2,015	2,030	1,930
AKRA	Negative	Trading	Negative	Sell	1,315	1,290	1,270	1,335	1,360	1,250
AMMN	Positive	Trading	Positive	Spec. Buy	7,925	7,700	7,400	8,225	8,450	7,300
AMRT	Positive	Trading	Negative	Hold	2,330	2,305	2,280	2,355	2,380	2,245
ANTM	Negative	Overbought	Negative	Strong Sell	3,530	3,465	3,410	3,585	3,650	3,355
ARTO	Positive	Trading	Negative	Hold	1,735	1,725	1,705	1,755	1,765	1,680
ASII	Positive	Trading	Negative	Hold	4,605	4,585	4,575	4,615	4,635	4,505
BBCA	Positive	Trading	Negative	Hold	8,950	8,875	8,825	9,000	9,075	8,675
BBNI	Positive	Trading	Negative	Hold	4,315	4,270	4,205	4,380	4,425	4,140
BBRI	Positive	Trading	Negative	Hold	3,940	3,915	3,880	3,975	4,000	3,820
BBTN	Positive	Trading	Negative	Hold	1,195	1,175	1,150	1,220	1,240	1,130
BMRI	Positive	Trading	Negative	Hold	5,075	5,050	4,995	5,125	5,150	4,920
BRIS	Positive	Oversold	Negative	Spec. Buy	2,600	2,560	2,510	2,650	2,690	2,470
BRPT	Negative	Overbought	Positive	Sell	1,530	1,510	1,475	1,565	1,585	1,450
CPIN	Positive	Trading	Negative	Hold	4,825	4,785	4,745	4,865	4,905	4,670
CTRA	Positive	Trading	Negative	Hold	985	965	945	1,005	1,025	930
ESSA	Negative	Overbought	Positive	Sell	660	615	565	710	755	555
EXCL	Positive	Trading	Positive	Spec. Buy	2,225	2,210	2,185	2,250	2,265	2,150
GOTO	Positive	Oversold	Positive	Buy	64	63	62	65	66	61
ICBP	Positive	Trading	Negative	Hold	10,625	10,575	10,500	10,700	10,750	10,325
INCO	Positive	Trading	Negative	Hold	3,545	3,450	3,345	3,650	3,745	3,295
INDF	Positive	Trading	Negative	Hold	8,200	8,075	7,975	8,300	8,425	7,850
INKP	Positive	Trading	Negative	Hold	6,100	5,975	5,750	6,325	6,450	5,675
ISAT	Positive	Trading	Negative	Hold	2,090	2,075	2,060	2,105	2,120	2,025
ITMG	Negative	Overbought	Positive	Sell	23,550	23,350	23,250	23,650	23,850	22,900
JPFA	Positive	Oversold	Positive	Buy	1,555	1,535	1,505	1,585	1,605	1,480
JSMR	Positive	Trading	Positive	Spec. Buy	3,825	3,780	3,735	3,870	3,915	3,680
KLBF	Negative	Trading	Negative	Sell	1,560	1,535	1,510	1,585	1,610	1,485
MAPA	Positive	Trading	Negative	Hold	660	640	620	680	700	610
MAPI	Positive	Trading	Negative	Hold	1,225	1,205	1,160	1,270	1,290	1,145
MBMA	Positive	Overbought	Positive	Hold	457	448	441	464	473	434
MDKA	Positive	Overbought	Negative	Sell	2,265	2,230	2,205	2,290	2,325	2,170
MEDC	Negative	Overbought	Positive	Sell	1,430	1,400	1,370	1,460	1,490	1,350
PGAS	Positive	Trading	Negative	Hold	1,685	1,665	1,640	1,710	1,730	1,615
PGEO	Negative	Overbought	Positive	Sell	1,575	1,535	1,470	1,640	1,680	1,450
PTBA	Positive	Overbought	Positive	Hold	3,030	3,005	2,990	3,045	3,070	2,945
SIDO	Positive	Oversold	Negative	Spec. Buy	505	498	494	510	515	486
SMGR	Negative	Trading	Positive	Hold	2,895	2,850	2,815	2,930	2,975	2,775
SMRA	Positive	Trading	Negative	Hold	406	399	394	411	418	388
TLKM	Positive	Trading	Negative	Hold	2,775	2,750	2,735	2,790	2,815	2,695
TOWR	Positive	Oversold	Negative	Spec. Buy	520	510	491	540	550	484
UNTR	Negative	Trading	Positive	Hold	21,900	21,725	21,550	22,075	22,250	21,225
UNVR	Positive	Oversold	Negative	Spec. Buy	1,460	1,450	1,410	1,500	1,510	1,390



## Kiwoom Research Team



### HEAD OFFICE

Treasury Tower 27th Floor Unit A, District 8 Kawasan SCBD Lot 28,  
Jl.Jend.Sudirman Kav 52-53, Jakarta Selatan 12190

Tel : (021) 5010 5800  
Fax : (021) 5010 5820  
Email : [cs@kiwoom.co.id](mailto:cs@kiwoom.co.id)

PT Kiwoom Sekuritas Indonesia is licensed and supervised by the Financial Services Authority (OJK)

### OTHER DISCLOSURES

All Kiwoom's research reports made available to clients are simultaneously available on our own website <http://www.kiwoom.co.id/>. Not all research content is redistributed, e-mailed or made available to third-party aggregators. For all research reports available on a particular stock, please contact your sales representative. Any data discrepancies in this report could be the result of different calculations and/or adjustments.

### DISCLAIMER

This report has been prepared and issued by PT Kiwoom Sekuritas Indonesia. Information has been obtained from sources believed to be reliable but Kiwoom Securities do not warrant its completeness or accuracy. Forward-looking information or statements in this report contain information that is based on forecast of future results, estimates of amounts not yet determinable, assumptions, and therefore involve known and unknown risks and uncertainties which may cause the actual results, performance or achievements of their subject matter to be materially different from current expectations. To the fullest extent allowed by law, PT Kiwoom Sekuritas Indonesia shall not be liable for any direct, indirect or consequential losses, loss of profits, damages, costs or expenses incurred or suffered by any person or organization arising from reliance on or use of any information contained on this report. The information that we provide should not be construed in any manner whatsoever as, personalized advice. No mention of a particular security in this report constitutes a recommendation to buy, sell or hold that or any security, or that any particular security, portfolio of securities, transaction or investment strategy is suitable for any specific person. This report is being supplied to you solely for your information and may not be reproduced by, further distributed to or published in whole or in part by, any other person.