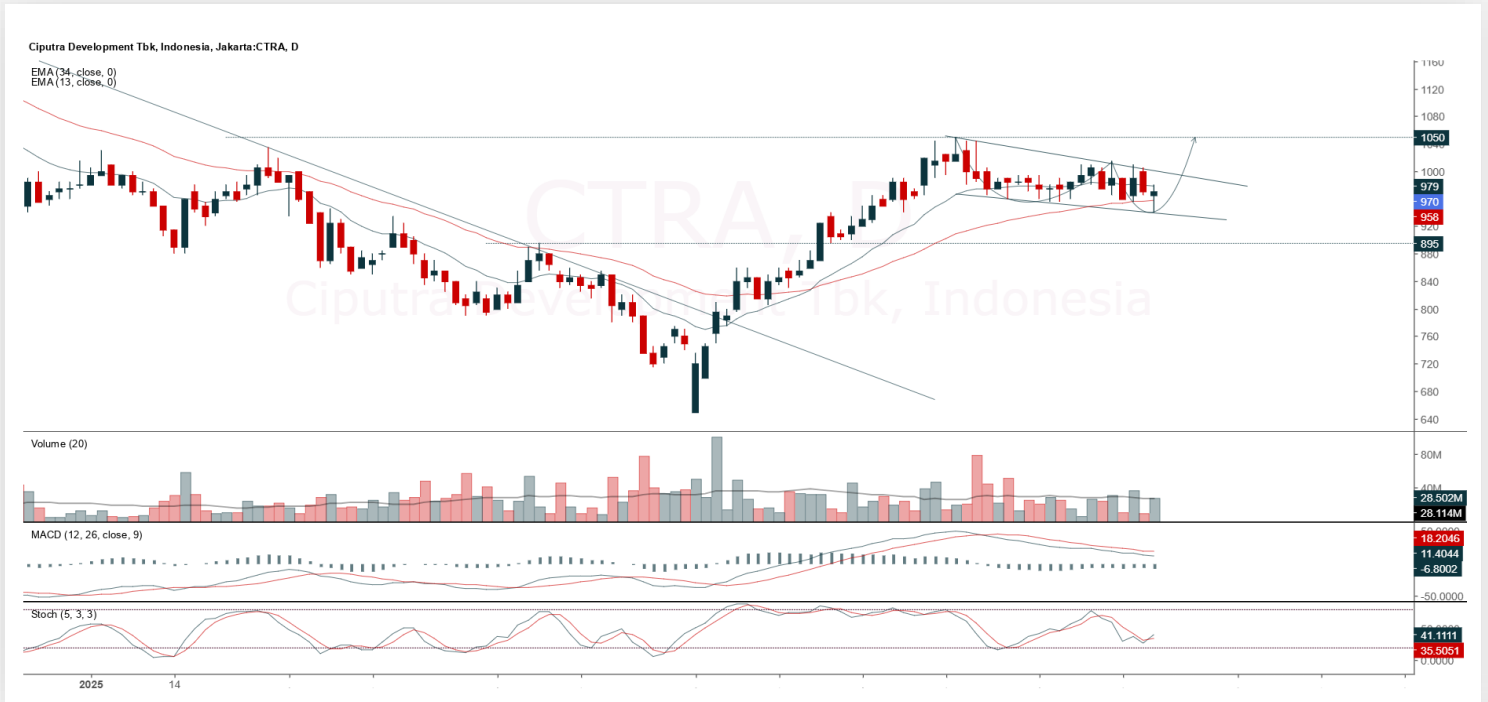




CTRA

Ciputra Development Tbk.



(CTRA). Price closed with a rebound and false breakdown at 960 support level. The strengthening is supported by a stochastic golden cross indicator and increasing volume.

ADVICE: Accumulate buy or if it corrects, consider buy on weakness at the support area.

Entry Buy	Target Price	Support	Cut Loss
935 – 970	1,010 – 1,050	920 – 935	910



EXCL

XLSMART Telecom Sejahtera Tbk.



(EXCL). Price is attempting to break up the sideways area. The strengthening is supported by a still bullish stochastic indicator and a bullish MACD line (histogram moving positively), as well as increasing volume.

ADVICE: Trading buy and accumulate buy.

Entry Buy	Target Price	Support	Cut Loss
2,150 – 2,230	2,320 – 2,410	2,110 – 2,150	2,090



HMSP

H.M. Sampoerna Tbk.



(HMSP). Price closed with a doji candle and is still in the support area. The strengthening is supported by a bullish stochastic indicator, a MACD line that is starting to flatten (histogram moving positively), and increasing volume.

ADVICE: Trading buy or accumulate buy.

Entry Buy	Target Price	Support	Cut Loss
600 – 620	645 – 670	590 – 600	580



KPIG

MNC Land Tbk.



(KPIG). Price continues to move bullish and is still within the previous candle area and remains in an uptrend. The strengthening is supported by a stochastic golden cross, a still bullish MACD line (histogram moving positively), and slightly increasing volume.

ADVICE: Trading buy or buy on weakness.

Entry Buy	Target Price	Support	Cut Loss
156 – 161	169 – 176	153 – 156	151

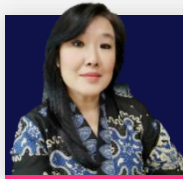


Forecast – Technical Analysis

Ticker	MA5	RSI Rec	MACD Trend	Recomm,	Pivot Point	Support 1	Support 2	Resistance 1	Resistance 2	Stop Loss Level
JCI	Positive	Trading	Negative	Hold	7,025	6,950	6,850	7,125	7,225	6,750
ACES	Positive	Trading	Negative	Hold	530	520	500	550	560	494
ADMR	Positive	Trading	Negative	Hold	1,015	1,000	970	1,045	1,060	955
ADRO	Positive	Oversold	Negative	Spec. Buy	1,955	1,925	1,885	1,995	2,025	1,860
AKRA	Negative	Trading	Negative	Sell	1,295	1,265	1,225	1,335	1,365	1,205
AMMN	Positive	Trading	Positive	Spec. Buy	7,825	7,700	7,500	8,025	8,150	7,400
AMRT	Positive	Trading	Negative	Hold	2,305	2,280	2,245	2,340	2,365	2,210
ANTM	Negative	Overbought	Negative	Strong Sell	3,445	3,305	3,165	3,585	3,725	3,115
ARTO	Positive	Trading	Negative	Hold	1,710	1,685	1,650	1,745	1,770	1,625
ASII	Negative	Oversold	Negative	Spec. Buy	4,555	4,510	4,455	4,610	4,655	4,390
BBCA	Positive	Trading	Negative	Hold	8,850	8,750	8,675	8,925	9,025	8,525
BBNI	Positive	Oversold	Negative	Spec. Buy	4,210	4,115	4,010	4,315	4,410	3,945
BBRI	Positive	Oversold	Negative	Spec. Buy	3,855	3,790	3,735	3,910	3,975	3,680
BBTN	Positive	Trading	Negative	Hold	1,155	1,135	1,100	1,190	1,210	1,085
BMRI	Positive	Trading	Negative	Hold	4,995	4,940	4,855	5,075	5,125	4,780
BRIS	Positive	Oversold	Negative	Spec. Buy	2,550	2,510	2,480	2,580	2,620	2,445
BRPT	Negative	Overbought	Positive	Sell	1,520	1,480	1,430	1,570	1,610	1,405
CPIN	Positive	Trading	Negative	Hold	4,760	4,695	4,650	4,805	4,870	4,580
CTRA	Negative	Trading	Negative	Sell	965	950	925	990	1,005	910
ESSA	Negative	Overbought	Positive	Sell	690	670	625	735	755	615
EXCL	Negative	Trading	Positive	Hold	2,230	2,190	2,160	2,260	2,300	2,130
GOTO	Positive	Oversold	Positive	Buy	62	60	58	64	66	57
ICBP	Positive	Oversold	Negative	Spec. Buy	10,550	10,425	10,275	10,700	10,825	10,125
INCO	Negative	Trading	Negative	Sell	3,400	3,285	3,200	3,485	3,600	3,150
INDF	Positive	Trading	Negative	Hold	8,125	7,975	7,875	8,225	8,375	7,750
INKP	Positive	Trading	Negative	Hold	5,875	5,750	5,575	6,050	6,175	5,500
ISAT	Negative	Trading	Negative	Sell	2,115	2,035	2,005	2,145	2,225	1,970
ITMG	Negative	Trading	Positive	Hold	23,125	22,700	22,150	23,675	24,100	21,825
JPFA	Positive	Oversold	Positive	Buy	1,540	1,525	1,505	1,560	1,575	1,480
JSMR	Positive	Oversold	Negative	Spec. Buy	3,755	3,720	3,675	3,800	3,835	3,620
KLBF	Negative	Trading	Negative	Sell	1,535	1,510	1,490	1,555	1,580	1,465
MAPA	Positive	Trading	Negative	Hold	635	625	595	665	675	585
MAPI	Positive	Oversold	Negative	Spec. Buy	1,215	1,180	1,135	1,260	1,295	1,115
MBMA	Positive	Trading	Positive	Spec. Buy	440	423	404	459	476	397
MDKA	Negative	Trading	Negative	Sell	2,175	2,100	1,985	2,290	2,365	1,955
MEDC	Negative	Overbought	Positive	Sell	1,420	1,390	1,325	1,485	1,515	1,305
PGAS	Positive	Oversold	Negative	Spec. Buy	1,655	1,635	1,595	1,695	1,715	1,570
PGEO	Negative	Overbought	Positive	Sell	1,505	1,460	1,400	1,565	1,610	1,380
PTBA	Negative	Overbought	Positive	Sell	3,000	2,970	2,930	3,040	3,070	2,885
SIDO	Positive	Oversold	Negative	Spec. Buy	497	490	484	505	510	477
SMGR	Positive	Trading	Negative	Hold	2,795	2,700	2,585	2,910	3,005	2,545
SMRA	Positive	Oversold	Negative	Spec. Buy	394	384	374	404	414	368
TLKM	Positive	Trading	Negative	Hold	2,710	2,640	2,560	2,790	2,860	2,520
TOWR	Positive	Oversold	Negative	Spec. Buy	505	496	486	515	525	479
UNTR	Negative	Trading	Positive	Hold	21,625	21,350	21,075	21,900	22,175	20,750
UNVR	Positive	Oversold	Negative	Spec. Buy	1,450	1,430	1,400	1,480	1,500	1,380



Kiwoom Research Team



Liza Camelia Suryanata

Head of Equity Research
liza.camelia@kiwoom.co.id



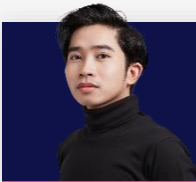
Sukarno Alatas

Senior Equity Research Analyst
sukarno@kiwoom.co.id



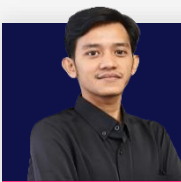
Abdul Azis Setyo W.

Equity Research Analyst
azis@kiwoom.co.id



Miftahul Khaer

Equity Research Analyst
khaer.miftahul@kiwoom.co.id



Wahyu Saputra

Equity Research Associate
wahyu.saputra@kiwoom.co.id



HEAD OFFICE

Treasury Tower 27th Floor Unit A, District 8 Kawasan SCBD Lot 28,
Jl.Jend.Sudirman Kav 52-53, Jakarta Selatan 12190

Tel : (021) 5010 5800
Fax : (021) 5010 5820
Email : cs@kiwoom.co.id

PT Kiwoom Sekuritas Indonesia is licensed and supervised by the Financial Services Authority (OJK)

OTHER DISCLOSURES

All Kiwoom's research reports made available to clients are simultaneously available on our own website <http://www.kiwoom.co.id/>. Not all research content is redistributed, e-mailed or made available to third-party aggregators. For all research reports available on a particular stock, please contact your sales representative. Any data discrepancies in this report could be the result of different calculations and/or adjustments.

DISCLAIMER

This report has been prepared and issued by PT Kiwoom Sekuritas Indonesia. Information has been obtained from sources believed to be reliable but Kiwoom Securities do not warrant its completeness or accuracy. Forward-looking information or statements in this report contain information that is based on forecast of future results, estimates of amounts not yet determinable, assumptions, and therefore involve known and unknown risks and uncertainties which may cause the actual results, performance or achievements of their subject matter to be materially different from current expectations. To the fullest extent allowed by law, PT Kiwoom Sekuritas Indonesia shall not be liable for any direct, indirect or consequential losses, loss of profits, damages, costs or expenses incurred or suffered by any person or organization arising from reliance on or use of any information contained on this report. The information that we provide should not be construed in any manner whatsoever as, personalized advice. No mention of a particular security in this report constitutes a recommendation to buy, sell or hold that or any security, or that any particular security, portfolio of securities, transaction or investment strategy is suitable for any specific person. This report is being supplied to you solely for your information and may not be reproduced by, further distributed to or published in whole or in part by, any other person.