



KSI Research

Technical Recommendation

Jakarta Composite Index Range Today

6,882 / 6,812 – 6,766 **7,000 – 7,006**
Support Resistance

Published on 23 June 2025



Jakarta Composite Index

JCI weakened again by 61.5pts / -0.88%, closing at the level of 6,907.14 after briefly filling the Gap around 6,882. In terms of pattern, this decline in JCI is not expected to end until it reaches the consolidation Target of 6,766; or at least the MA50 Support at 6,812. Considering the condition of regional markets & the escalating global conflict, **KIWOOM RESEARCH** advises investors/traders to anticipate further consolidation of around 1% before the index begins stabilizing.

ADVICE: HOLD; WAIT & SEE.



ADMR

Adaro Minerals Indonesia Tbk.



(ADMR). Price closed with a rebound after touching support. Strengthening is supported by a bullish stochastic indicator and MACD histogram moving in a positive direction, along with increasing volume.

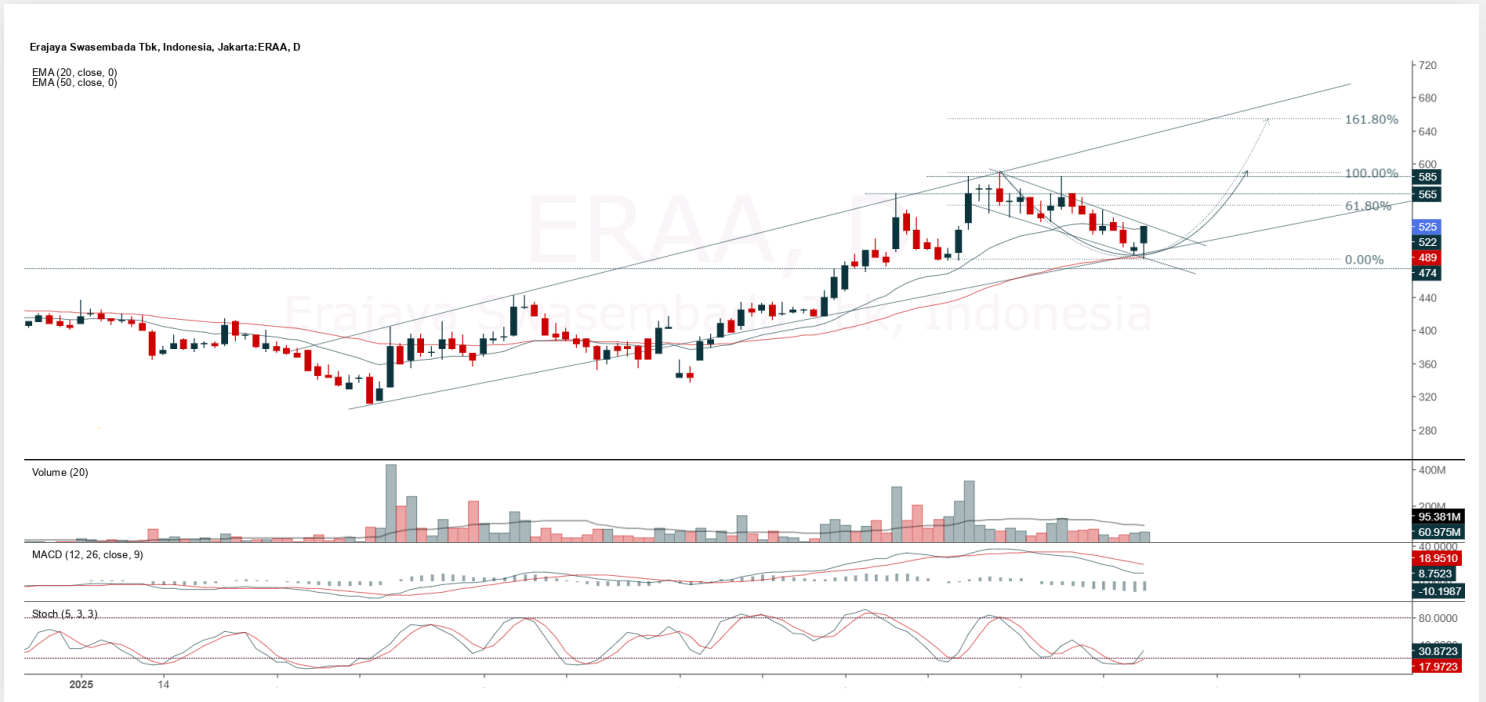
ADVICE: Trading buy or accumulate buy.

Entry Buy	Target Price	Support	Cut Loss
985 – 1,020	1,065 – 1,105	965 – 985	955



ERAA

Erajaya Swasembada Tbk.



(ERAA). Price formed a swing low after holding at the support area. Strengthening is supported by a bullish stochastic indicator and MACD histogram moving in a positive direction, along with an increasing volume trend.

ADVICE: Trading buy or accumulate buy.

Entry Buy	Target Price	Support	Cut Loss
505 – 525	550 – 570	496 – 505	492



ISAT

Indosat Tbk.



(ISAT). Price is moving bullish again and is currently testing the nearest resistance. Strengthening is supported by a MACD histogram moving in a positive direction and an increasing volume trend.

ADVICE: Accumulate buy or buy on break level 2,130.

Entry Buy	Target Price	Support	Cut Loss
2,030 – 2,100	2,190 – 2,280	1,980 – 2,030	1,970



WIFI

Solusi Sinergi Digital Tbk.



(WIFI). Price formed a swing low after touching the trendline support. Strengthening is supported by a bullish stochastic indicator and MACD histogram moving in a positive direction, along with an increasing volume trend.

ADVICE: Trading buy or accumulate buy.

Entry Buy	Target Price	Support	Cut Loss
2,010 – 2,080	2,170 – 2,270	1,960 – 2,010	1,950

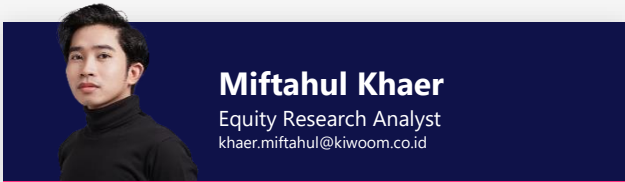


Forecast – Technical Analysis

Ticker	MA5	RSI Rec	MACD Trend	Recomm,	Pivot Point	Support 1	Support 2	Resistance 1	Resistance 2	Stop Loss Level
JCI	Positive	Trading	Negative	Hold	6,925	6,875	6,850	6,975	7,000	6,725
ACES	Positive	Trading	Negative	Hold	520	510	500	530	540	493
ADMR	Negative	Trading	Negative	Sell	1,005	985	950	1,040	1,060	935
ADRO	Positive	Oversold	Negative	Spec. Buy	1,895	1,850	1,810	1,935	1,980	1,780
AKRA	Positive	Trading	Negative	Hold	1,245	1,215	1,185	1,275	1,305	1,165
AMMN	Positive	Trading	Negative	Hold	7,725	7,525	7,250	8,000	8,200	7,125
AMRT	Positive	Oversold	Negative	Spec. Buy	2,280	2,255	2,220	2,315	2,340	2,185
ANTM	Negative	Trading	Negative	Sell	3,260	3,175	3,080	3,355	3,440	3,030
ARTO	Positive	Trading	Negative	Hold	1,685	1,660	1,620	1,725	1,750	1,595
ASII	Positive	Oversold	Negative	Spec. Buy	4,510	4,485	4,460	4,535	4,560	4,390
BBCA	Positive	Oversold	Negative	Spec. Buy	8,725	8,575	8,475	8,825	8,975	8,350
BBNI	Positive	Oversold	Negative	Spec. Buy	4,105	4,070	4,015	4,160	4,195	3,955
BBRI	Positive	Oversold	Negative	Spec. Buy	3,780	3,715	3,680	3,815	3,880	3,620
BBTN	Positive	Trading	Negative	Hold	1,125	1,110	1,085	1,150	1,165	1,070
BMRI	Positive	Oversold	Negative	Spec. Buy	4,925	4,855	4,765	5,025	5,075	4,690
BRIS	Positive	Oversold	Negative	Spec. Buy	2,485	2,440	2,365	2,560	2,605	2,330
BRPT	Positive	Overbought	Negative	Sell	1,505	1,450	1,415	1,540	1,595	1,395
CPIN	Positive	Trading	Negative	Hold	4,650	4,580	4,450	4,780	4,850	4,385
CTRA	Positive	Trading	Negative	Hold	955	940	915	980	995	900
ESSA	Negative	Trading	Positive	Hold	685	650	625	710	745	615
EXCL	Negative	Trading	Positive	Hold	2,255	2,190	2,165	2,280	2,345	2,135
GOTO	Positive	Oversold	Negative	Spec. Buy	60	58	56	62	64	55
ICBP	Positive	Oversold	Negative	Spec. Buy	10,425	10,225	9,975	10,675	10,875	9,825
INCO	Positive	Trading	Negative	Hold	3,285	3,225	3,175	3,335	3,395	3,125
INDF	Positive	Trading	Negative	Hold	8,075	8,000	7,975	8,100	8,175	7,850
INKP	Positive	Trading	Negative	Hold	5,775	5,625	5,525	5,875	6,025	5,450
ISAT	Negative	Trading	Negative	Sell	2,100	2,075	2,060	2,115	2,140	2,025
ITMG	Negative	Trading	Positive	Hold	22,575	22,375	22,150	22,800	23,000	21,825
JPFA	Positive	Oversold	Negative	Spec. Buy	1,515	1,495	1,480	1,530	1,550	1,460
JSMR	Positive	Oversold	Negative	Spec. Buy	3,715	3,690	3,645	3,760	3,785	3,590
KLBF	Negative	Trading	Negative	Sell	1,505	1,485	1,460	1,530	1,550	1,440
MAPA	Positive	Trading	Negative	Hold	645	625	600	670	690	590
MAPI	Positive	Oversold	Negative	Spec. Buy	1,175	1,160	1,135	1,200	1,215	1,115
MBMA	Positive	Trading	Negative	Hold	424	407	396	435	452	390
MDKA	Positive	Trading	Negative	Hold	2,080	2,005	1,950	2,135	2,210	1,920
MEDC	Negative	Overbought	Positive	Sell	1,425	1,405	1,370	1,460	1,480	1,350
PGAS	Positive	Oversold	Negative	Spec. Buy	1,615	1,590	1,560	1,645	1,670	1,540
PGEO	Negative	Trading	Negative	Sell	1,435	1,375	1,330	1,480	1,540	1,310
PTBA	Negative	Trading	Negative	Sell	2,970	2,935	2,900	3,005	3,040	2,855
SIDO	Positive	Oversold	Negative	Spec. Buy	493	486	483	496	505	476
SMGR	Positive	Trading	Negative	Hold	2,705	2,650	2,595	2,760	2,815	2,555
SMRA	Positive	Oversold	Negative	Spec. Buy	384	377	372	389	396	366
TLKM	Positive	Trading	Negative	Hold	2,675	2,635	2,605	2,705	2,745	2,565
TOWR	Positive	Oversold	Negative	Spec. Buy	494	484	475	505	515	468
UNTR	Positive	Trading	Positive	Spec. Buy	21,400	21,350	21,200	21,550	21,600	20,900
UNVR	Positive	Oversold	Negative	Spec. Buy	1,415	1,375	1,340	1,450	1,490	1,320



Kiwoom Research Team



HEAD OFFICE

Treasury Tower 27th Floor Unit A, District 8 Kawasan SCBD Lot 28,
Jl.Jend.Sudirman Kav 52-53, Jakarta Selatan 12190

Tel : (021) 5010 5800
Fax : (021) 5010 5820
Email : cs@kiwoom.co.id

PT Kiwoom Sekuritas Indonesia is licensed and supervised by the Financial Services Authority (OJK)

OTHER DISCLOSURES

All Kiwoom's research reports made available to clients are simultaneously available on our own website <http://www.kiwoom.co.id/>. Not all research content is redistributed, e-mailed or made available to third-party aggregators. For all research reports available on a particular stock, please contact your sales representative. Any data discrepancies in this report could be the result of different calculations and/or adjustments.

DISCLAIMER

This report has been prepared and issued by PT Kiwoom Sekuritas Indonesia. Information has been obtained from sources believed to be reliable but Kiwoom Securities do not warrant its completeness or accuracy. Forward-looking information or statements in this report contain information that is based on forecast of future results, estimates of amounts not yet determinable, assumptions, and therefore involve known and unknown risks and uncertainties which may cause the actual results, performance or achievements of their subject matter to be materially different from current expectations. To the fullest extent allowed by law, PT Kiwoom Sekuritas Indonesia shall not be liable for any direct, indirect or consequential losses, loss of profits, damages, costs or expenses incurred or suffered by any person or organization arising from reliance on or use of any information contained on this report. The information that we provide should not be construed in any manner whatsoever as, personalized advice. No mention of a particular security in this report constitutes a recommendation to buy, sell or hold that or any security, or that any particular security, portfolio of securities, transaction or investment strategy is suitable for any specific person. This report is being supplied to you solely for your information and may not be reproduced by, further distributed to or published in whole or in part by, any other person.