



KSI Research

Technical Recommendation

Jakarta Composite Index Range Today

6,745 – 6,700

Support

6,825 – 6,880 / 7,000 / 7,080 – 7,110

Resistance

Published on 24 June 2025



Jakarta Composite Index

JCI dropped 120 points / -1.74% to the level of 6,787.14, accompanied by Foreign Net Sell amounting to IDR 276.84 billion; the weakening of RUPIAH exchange rate to the level of 16,480 / USD also contributed to the negative sentiment in the market. However, with the latest update regarding the MIDDLE EAST CONFLICT and the Asian markets turning green this morning, it is certain that JCI today will enjoy a technical rebound after completing the consolidation target from the (bearish reversal) DOUBLE TOP pattern yesterday, precisely hitting the level of 6,766 (overshooting to the Low point of 6,745).

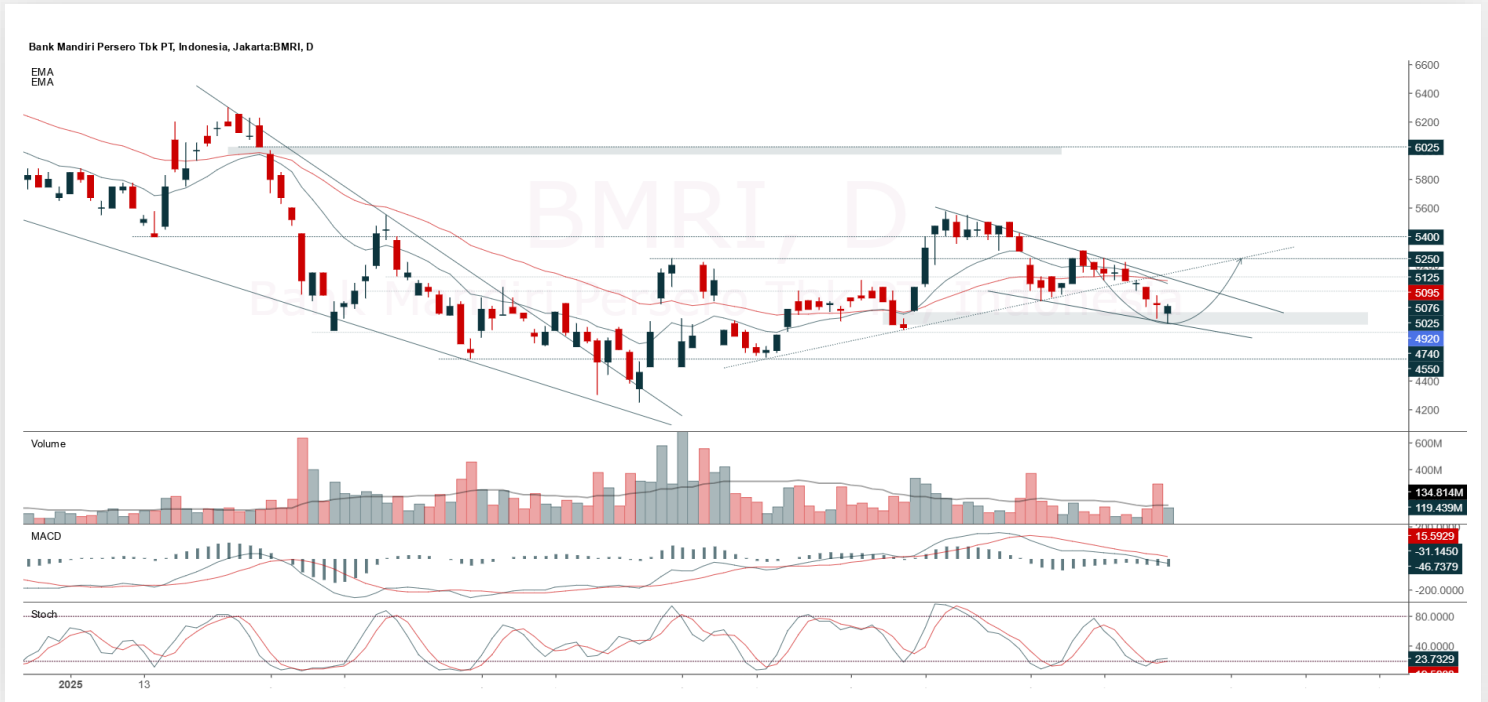
However, **KIWOOM RESEARCH** needs to remind to anticipate a conservative upside potential, as JCI currently must climb back above several crucial Moving Averages to create a stable Uptrend posture. Therefore, the current market advice remains relatively HIGHLY SPECULATIVE, with the following Resistance layers as gradual Average Up levels (for safety): MA50 (6,825) / close the GAP (6,880) / NECKLINE & psychological level 7,000 / MA10 & MA20 (7,080 – 7,110).

ADVICE: SPECULATIVE BUY; Average Up accordingly.



BMRI

Bank Mandiri (Persero) Tbk.



(BMRI). Price successfully rebounded after touching the gap/support area. The bullish move is supported by the stochastic indicator beginning a golden cross and an increasing volume trend.

ADVICE: Trading buy or accumulate buy.

Entry Buy	Target Price	Support	Cut Loss
4,800 – 4,920	5,075 – 5,250	4,720 – 4,800	4,700



EXCL

XLSMART Telecom Sejahtera Tbk.



(EXCL). Price briefly broke down support but then managed to rebound and closed higher. The upward movement is supported by the MACD line, which remains bullish (histogram moving positively), and a slight increase in volume trend.

ADVICE: Trading buy and accumulate buy.

Entry Buy	Target Price	Support	Cut Loss
2,170 – 2,250	2,340 – 2,430	2,130 – 2,170	2,110



INKP

Indah Kiat Pulp & Paper Tbk.



(INKP). Price successfully reversed after touching the gap/support area. The bullish move is supported by the stochastic indicator beginning a golden cross and an increasing volume trend.

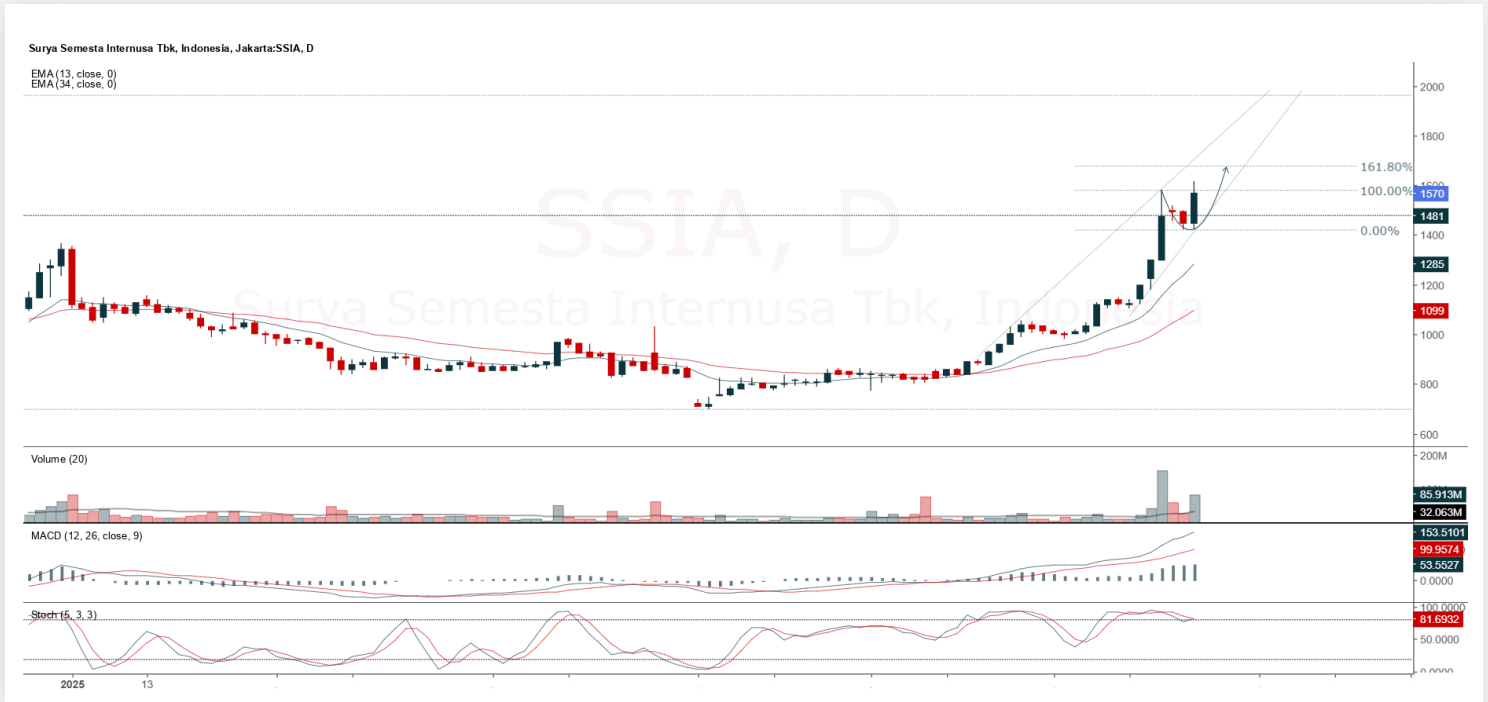
ADVICE: Trading buy or accumulate buy.

Entry Buy	Target Price	Support	Cut Loss
5,650 – 5,775	6,025 – 6,250	5,550 – 5,650	5,500



SSIA

Surya Semesta Internusa Tbk.



(SSIA). Price rallied again after a brief pullback. The upward movement is supported by a strong stochastic indicator despite being in the overbought area, a bullish MACD line (positive-moving histogram), and increasing volume.

ADVICE: Trading buy or averaging up.

Entry Buy	Target Price	Support	Cut Loss
1,520 – 1,570	1,630 – 1,690	1,480 – 1,520	1,470



Forecast – Technical Analysis

Ticker	MA5	RSI Rec	MACD Trend	Recomm,	Pivot Point	Support 1	2	Resistance 1	2	Stop Loss Level
JCI	Positive	Oversold	Negative	Spec. Buy	6,800	6,775	6,700	6,850	6,900	6,600
ACES	Positive	Oversold	Negative	Spec. Buy	505	494	483	520	530	476
ADMR	Positive	Trading	Negative	Hold	1,005	995	975	1,025	1,035	960
ADRO	Positive	Oversold	Negative	Spec. Buy	1,825	1,795	1,765	1,855	1,885	1,735
AKRA	Positive	Trading	Negative	Hold	1,265	1,230	1,210	1,285	1,320	1,195
AMMN	Negative	Trading	Negative	Sell	7,700	7,575	7,375	7,900	8,025	7,275
AMRT	Positive	Oversold	Negative	Spec. Buy	2,210	2,170	2,100	2,280	2,320	2,070
ANTM	Negative	Trading	Negative	Sell	3,155	3,015	2,925	3,245	3,385	2,880
ARTO	Positive	Oversold	Negative	Spec. Buy	1,630	1,585	1,545	1,670	1,715	1,520
ASII	Positive	Oversold	Negative	Spec. Buy	4,445	4,415	4,375	4,485	4,515	4,305
BBCA	Positive	Oversold	Negative	Spec. Buy	8,600	8,500	8,400	8,700	8,800	8,275
BBNI	Positive	Oversold	Negative	Spec. Buy	4,050	3,995	3,920	4,125	4,180	3,860
BBRI	Positive	Oversold	Negative	Spec. Buy	3,715	3,680	3,625	3,770	3,805	3,570
BBTN	Positive	Oversold	Negative	Spec. Buy	1,080	1,070	1,040	1,110	1,120	1,025
BMRI	Positive	Oversold	Negative	Spec. Buy	4,880	4,830	4,750	4,960	5,000	4,680
BRIS	Positive	Oversold	Negative	Spec. Buy	2,420	2,375	2,320	2,475	2,520	2,285
BRPT	Positive	Overbought	Negative	Sell	1,480	1,430	1,390	1,520	1,570	1,365
CPIN	Positive	Oversold	Negative	Spec. Buy	4,490	4,395	4,290	4,595	4,690	4,225
CTRA	Positive	Oversold	Negative	Spec. Buy	905	875	840	940	970	825
ESSA	Negative	Overbought	Positive	Sell	685	660	645	700	725	635
EXCL	Negative	Trading	Positive	Hold	2,235	2,190	2,135	2,290	2,335	2,105
GOTO	Positive	Oversold	Negative	Spec. Buy	57	56	54	59	60	53
ICBP	Positive	Oversold	Negative	Spec. Buy	10,125	9,950	9,775	10,300	10,475	9,625
INCO	Positive	Trading	Negative	Hold	3,145	3,075	2,985	3,235	3,305	2,940
INDF	Positive	Trading	Negative	Hold	7,925	7,875	7,725	8,075	8,125	7,625
INKP	Positive	Trading	Negative	Hold	5,700	5,625	5,450	5,875	5,950	5,375
ISAT	Positive	Trading	Negative	Hold	2,025	1,960	1,835	2,150	2,215	1,805
ITMG	Positive	Trading	Negative	Hold	22,350	22,125	21,875	22,600	22,825	21,550
JPFA	Positive	Oversold	Negative	Spec. Buy	1,465	1,440	1,405	1,500	1,525	1,385
JSMR	Positive	Oversold	Negative	Spec. Buy	3,620	3,565	3,510	3,675	3,730	3,455
KLBF	Positive	Trading	Negative	Hold	1,460	1,425	1,375	1,510	1,545	1,355
MAPA	Positive	Oversold	Negative	Spec. Buy	635	620	600	655	670	590
MAPI	Positive	Oversold	Negative	Spec. Buy	1,120	1,085	1,040	1,165	1,200	1,025
MBMA	Positive	Trading	Negative	Hold	399	380	359	420	439	354
MDKA	Positive	Trading	Negative	Hold	2,025	1,955	1,885	2,095	2,165	1,855
MEDC	Negative	Overbought	Positive	Sell	1,480	1,430	1,390	1,520	1,570	1,365
PGAS	Positive	Oversold	Negative	Spec. Buy	1,610	1,575	1,550	1,635	1,670	1,530
PGEO	Positive	Trading	Negative	Hold	1,320	1,280	1,240	1,360	1,400	1,220
PTBA	Positive	Oversold	Negative	Spec. Buy	2,535	2,475	2,455	2,555	2,615	2,415
SIDO	Positive	Oversold	Negative	Spec. Buy	486	481	476	491	496	468
SMGR	Positive	Oversold	Negative	Spec. Buy	2,580	2,510	2,430	2,660	2,730	2,395
SMRA	Positive	Oversold	Negative	Spec. Buy	367	364	359	372	375	354
TLKM	Positive	Oversold	Negative	Spec. Buy	2,590	2,570	2,540	2,620	2,640	2,500
TOWR	Positive	Oversold	Negative	Spec. Buy	480	476	468	488	492	461
UNTR	Positive	Oversold	Negative	Spec. Buy	21,100	20,900	20,700	21,300	21,500	20,400
UNVR	Positive	Oversold	Negative	Spec. Buy	1,350	1,310	1,265	1,395	1,435	1,245



Kiwoom Research Team



HEAD OFFICE

Treasury Tower 27th Floor Unit A, District 8 Kawasan SCBD Lot 28,
Jl.Jend.Sudirman Kav 52-53, Jakarta Selatan 12190

Tel : (021) 5010 5800
Fax : (021) 5010 5820
Email : cs@kiwoom.co.id

PT Kiwoom Sekuritas Indonesia is licensed and supervised by the Financial Services Authority (OJK)

OTHER DISCLOSURES

All Kiwoom's research reports made available to clients are simultaneously available on our own website <http://www.kiwoom.co.id/>. Not all research content is redistributed, e-mailed or made available to third-party aggregators. For all research reports available on a particular stock, please contact your sales representative. Any data discrepancies in this report could be the result of different calculations and/or adjustments.

DISCLAIMER

This report has been prepared and issued by PT Kiwoom Sekuritas Indonesia. Information has been obtained from sources believed to be reliable but Kiwoom Securities do not warrant its completeness or accuracy. Forward-looking information or statements in this report contain information that is based on forecast of future results, estimates of amounts not yet determinable, assumptions, and therefore involve known and unknown risks and uncertainties which may cause the actual results, performance or achievements of their subject matter to be materially different from current expectations. To the fullest extent allowed by law, PT Kiwoom Sekuritas Indonesia shall not be liable for any direct, indirect or consequential losses, loss of profits, damages, costs or expenses incurred or suffered by any person or organization arising from reliance on or use of any information contained on this report. The information that we provide should not be construed in any manner whatsoever as, personalized advice. No mention of a particular security in this report constitutes a recommendation to buy, sell or hold that or any security, or that any particular security, portfolio of securities, transaction or investment strategy is suitable for any specific person. This report is being supplied to you solely for your information and may not be reproduced by, further distributed to or published in whole or in part by, any other person.