



KSI Research

# Technical Recommendation

Jakarta Composite Index Range Today

**6,852 – 6,840**

Support

**6,925 – 7,000**

Resistance

Published on 25 June 2025



## Jakarta Composite Index

JCI yesterday recorded a jump of 82 pts / +1.21% to the level of 6,869.17, deflating from the intraday high of 6,925 which will definitely become the nearest target for now (up to the psychological level of 7,000). Meanwhile, the MA50 around the 6,840 area will serve as the first support that must maintain this technical rebound from slipping away again. **KIWOOM RESEARCH** once again reminds investors/traders not to be too aggressive in adding buys, considering that volatility will likely remain high going forward.

**ADVICE:** *AVERAGE UP accordingly, highly speculative, mind your money-management.*



## AMMN

Amman Mineral Internasional Tbk.



**(AMMN).** Price rallied again and returned above the 7,850 level (potential continuation of uptrend). The strengthening is supported by the stochastic indicator forming a golden cross (bullish convergence) and increasing volume.

**ADVICE:** Trading buy or averaging up.

Entry Buy	Target Price	Support	Cut Loss
7,800 – 8,075	8,375 – 8,700	7,625 – 7,800	7,575



## BBNI

Bank Negara Indonesia (Persero) Tbk.



**(BBNI).** Price has formed another swing low. The strengthening is supported by the stochastic indicator starting to form a golden cross, MACD histogram beginning to move into positive territory, and increasing volume trend.

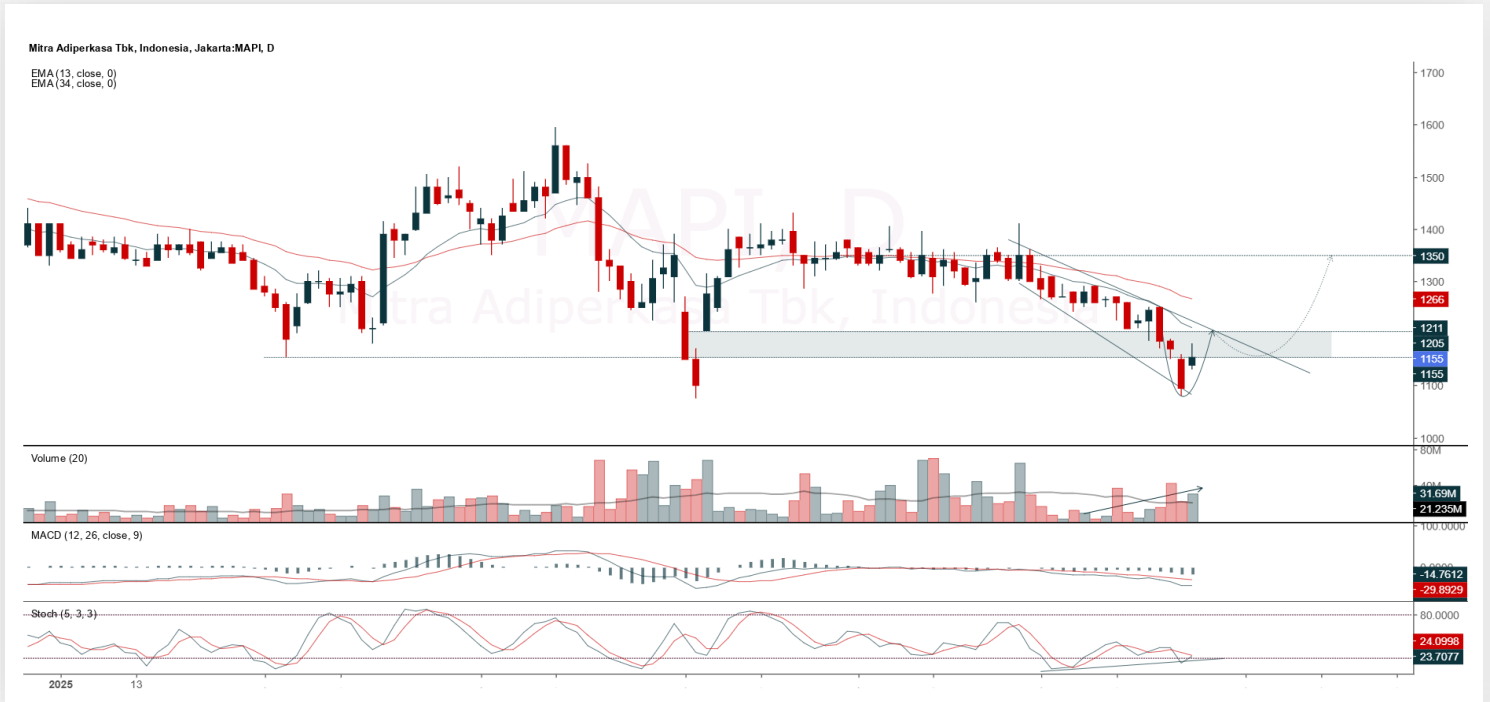
**ADVICE:** Trading buy or accumulation buy.

Entry Buy	Target Price	Support	Cut Loss
4,000 – 4,140	4,310 – 4,480	3,900 – 4,000	3,880



## MAPI

Mitra Adiperkasa Tbk.



**(MAPI).** Price has started a reversal after touching its strong support area. The strengthening is supported by the stochastic indicator showing potential for a golden cross (bullish divergence) and increasing volume trend.

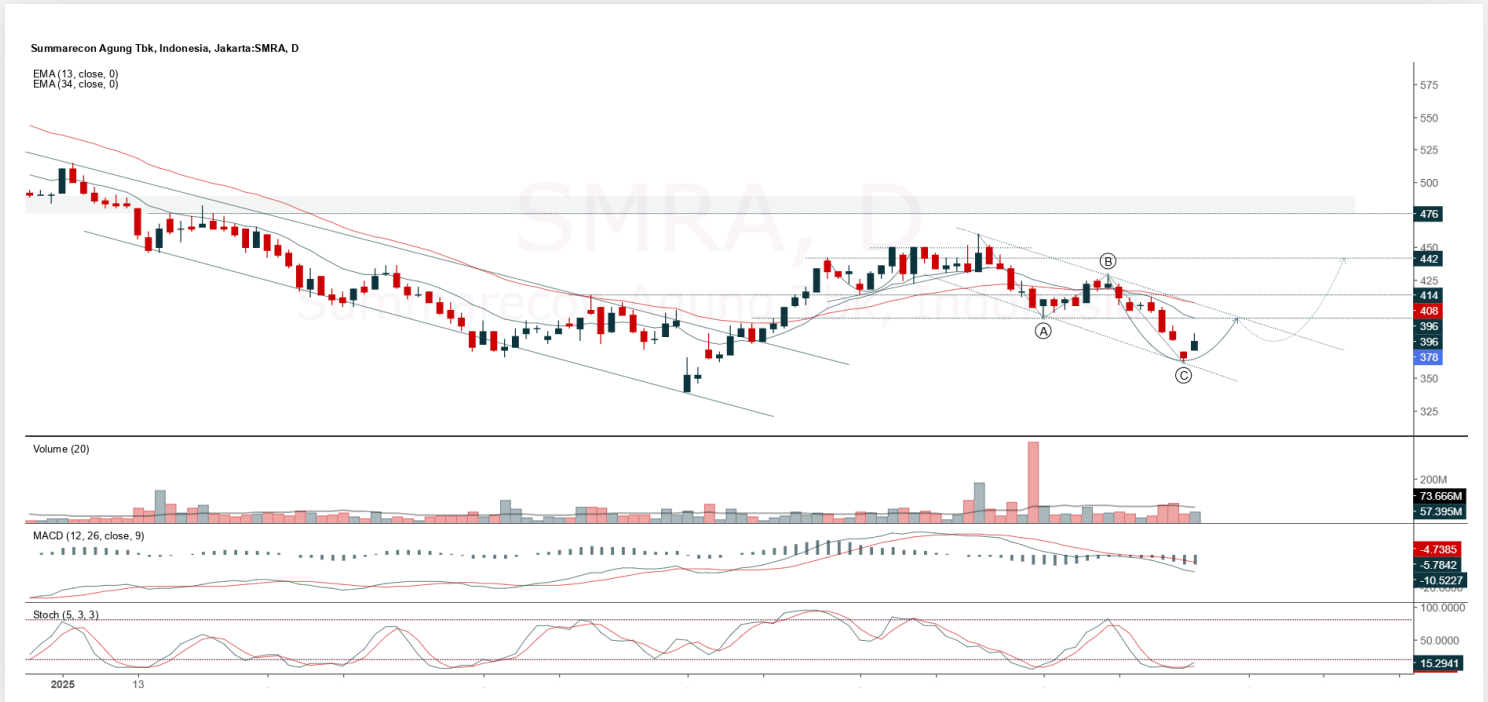
**ADVICE:** Trading buy and accumulation buy.

Entry Buy	Target Price	Support	Cut Loss
1,115 – 1,155	1,205 – 1,250	1,095 – 1,115	1,085



## SMRA

Summarecon Agung Tbk.



**(SMRA).** Price has formed another swing low and completed the ABC correction pattern. The strengthening is supported by the stochastic indicator starting to form a golden cross, MACD histogram beginning to move into positive territory, and increasing volume.

**ADVICE:** Trading buy or accumulation buy.

Entry Buy	Target Price	Support	Cut Loss
366 – 378	394 – 410	358 – 366	354



## Forecast – Technical Analysis

Ticker	MA5	RSI Rec	MACD Trend	Recomm,	Pivot Point	Support 1	Support 2	Resistance 1	Resistance 2	Stop Loss Level
JCI	Positive	Trading	Negative	Hold	6,875	6,825	6,800	6,900	6,950	6,700
ACES	Positive	Trading	Negative	Hold	505	493	485	515	530	477
ADMR	Negative	Trading	Negative	Sell	1,020	995	980	1,035	1,060	965
ADRO	Positive	Oversold	Negative	Spec. Buy	1,820	1,795	1,785	1,830	1,855	1,760
AKRA	Positive	Trading	Negative	Hold	1,215	1,180	1,160	1,235	1,270	1,145
AMMN	Positive	Overbought	Negative	Sell	8,000	7,750	7,600	8,150	8,400	7,475
AMRT	Positive	Oversold	Negative	Spec. Buy	2,280	2,255	2,230	2,305	2,330	2,195
ANTM	Positive	Trading	Negative	Hold	3,150	3,055	2,980	3,225	3,320	2,935
ARTO	Positive	Oversold	Negative	Spec. Buy	1,625	1,575	1,540	1,660	1,710	1,520
ASII	Positive	Oversold	Negative	Spec. Buy	4,470	4,435	4,400	4,505	4,540	4,330
BBCA	Positive	Trading	Negative	Hold	8,775	8,675	8,625	8,825	8,925	8,475
BBNI	Positive	Oversold	Negative	Spec. Buy	4,165	4,115	4,095	4,185	4,235	4,030
BBRI	Positive	Oversold	Negative	Spec. Buy	3,820	3,735	3,690	3,865	3,950	3,630
BBTN	Positive	Trading	Negative	Hold	1,115	1,095	1,085	1,125	1,145	1,070
BMRI	Positive	Trading	Negative	Hold	5,050	4,990	4,955	5,100	5,150	4,880
BRIS	Positive	Trading	Negative	Hold	2,530	2,480	2,440	2,570	2,620	2,405
BRPT	Positive	Overbought	Negative	Sell	1,530	1,500	1,465	1,565	1,595	1,440
CPIN	Positive	Trading	Negative	Hold	4,520	4,410	4,320	4,610	4,720	4,255
CTRA	Positive	Trading	Negative	Hold	935	895	870	960	1,000	855
ESSA	Negative	Trading	Positive	Hold	640	615	590	665	690	580
EXCL	Positive	Trading	Positive	Spec. Buy	2,250	2,210	2,180	2,280	2,320	2,145
GOTO	Positive	Oversold	Negative	Spec. Buy	58	56	54	60	62	53
ICBP	Positive	Oversold	Negative	Spec. Buy	10,250	10,125	10,050	10,325	10,450	9,900
INCO	Positive	Trading	Negative	Hold	3,155	3,100	3,065	3,190	3,245	3,020
INDF	Positive	Trading	Negative	Hold	7,950	7,875	7,825	8,000	8,075	7,700
INKP	Positive	Trading	Negative	Hold	5,850	5,725	5,675	5,900	6,025	5,575
ISAT	Positive	Trading	Negative	Hold	2,060	2,025	2,010	2,075	2,110	1,975
ITMG	Positive	Trading	Negative	Hold	22,325	22,125	22,025	22,425	22,625	21,675
JPFA	Positive	Oversold	Negative	Spec. Buy	1,465	1,440	1,430	1,475	1,500	1,405
JSMR	Positive	Oversold	Negative	Spec. Buy	3,660	3,585	3,540	3,705	3,780	3,485
KLBF	Positive	Trading	Negative	Hold	1,475	1,445	1,415	1,505	1,535	1,395
MAPA	Positive	Trading	Negative	Hold	655	630	610	675	700	600
MAPI	Positive	Oversold	Negative	Spec. Buy	1,145	1,110	1,085	1,170	1,205	1,065
MBMA	Positive	Trading	Negative	Hold	406	388	372	422	440	366
MDKA	Positive	Trading	Negative	Hold	2,030	1,980	1,940	2,070	2,120	1,910
MEDC	Negative	Trading	Positive	Hold	1,325	1,295	1,280	1,340	1,370	1,260
PGAS	Positive	Oversold	Negative	Spec. Buy	1,605	1,575	1,550	1,630	1,660	1,525
PGEO	Positive	Trading	Negative	Hold	1,335	1,290	1,220	1,405	1,450	1,200
PTBA	Positive	Oversold	Negative	Spec. Buy	2,485	2,420	2,355	2,550	2,615	2,320
SIDO	Positive	Oversold	Negative	Spec. Buy	488	480	476	492	500	469
SMGR	Positive	Trading	Negative	Hold	2,585	2,550	2,525	2,610	2,645	2,485
SMRA	Positive	Oversold	Negative	Spec. Buy	377	369	365	381	389	359
TLKM	Positive	Oversold	Negative	Spec. Buy	2,610	2,550	2,520	2,640	2,700	2,480
TOWR	Positive	Oversold	Negative	Spec. Buy	488	480	472	496	505	465
UNTR	Positive	Trading	Negative	Hold	21,150	21,025	20,950	21,225	21,350	20,625
UNVR	Positive	Oversold	Negative	Spec. Buy	1,430	1,390	1,365	1,455	1,495	1,340



## Kiwoom Research Team



### HEAD OFFICE

Treasury Tower 27th Floor Unit A, District 8 Kawasan SCBD Lot 28,  
Jl.Jend.Sudirman Kav 52-53, Jakarta Selatan 12190

Tel : (021) 5010 5800  
Fax : (021) 5010 5820  
Email : [cs@kiwoom.co.id](mailto:cs@kiwoom.co.id)

PT Kiwoom Sekuritas Indonesia is licensed and supervised by the Financial Services Authority (OJK)

### OTHER DISCLOSURES

All Kiwoom's research reports made available to clients are simultaneously available on our own website <http://www.kiwoom.co.id/>. Not all research content is redistributed, e-mailed or made available to third-party aggregators. For all research reports available on a particular stock, please contact your sales representative. Any data discrepancies in this report could be the result of different calculations and/or adjustments.

### DISCLAIMER

This report has been prepared and issued by PT Kiwoom Sekuritas Indonesia. Information has been obtained from sources believed to be reliable but Kiwoom Securities do not warrant its completeness or accuracy. Forward-looking information or statements in this report contain information that is based on forecast of future results, estimates of amounts not yet determinable, assumptions, and therefore involve known and unknown risks and uncertainties which may cause the actual results, performance or achievements of their subject matter to be materially different from current expectations. To the fullest extent allowed by law, PT Kiwoom Sekuritas Indonesia shall not be liable for any direct, indirect or consequential losses, loss of profits, damages, costs or expenses incurred or suffered by any person or organization arising from reliance on or use of any information contained on this report. The information that we provide should not be construed in any manner whatsoever as, personalized advice. No mention of a particular security in this report constitutes a recommendation to buy, sell or hold that or any security, or that any particular security, portfolio of securities, transaction or investment strategy is suitable for any specific person. This report is being supplied to you solely for your information and may not be reproduced by, further distributed to or published in whole or in part by, any other person.