



KSI Research

KIWOOM
SEKURITAS INDONESIA

Technical Recommendation

Jakarta Composite Index Range Today

6,815 / 6,770 – 6,745 **6,845 / 6,920 – 7,000**
Support Resistance

Published on 26 June 2025



Jakarta Composite Index

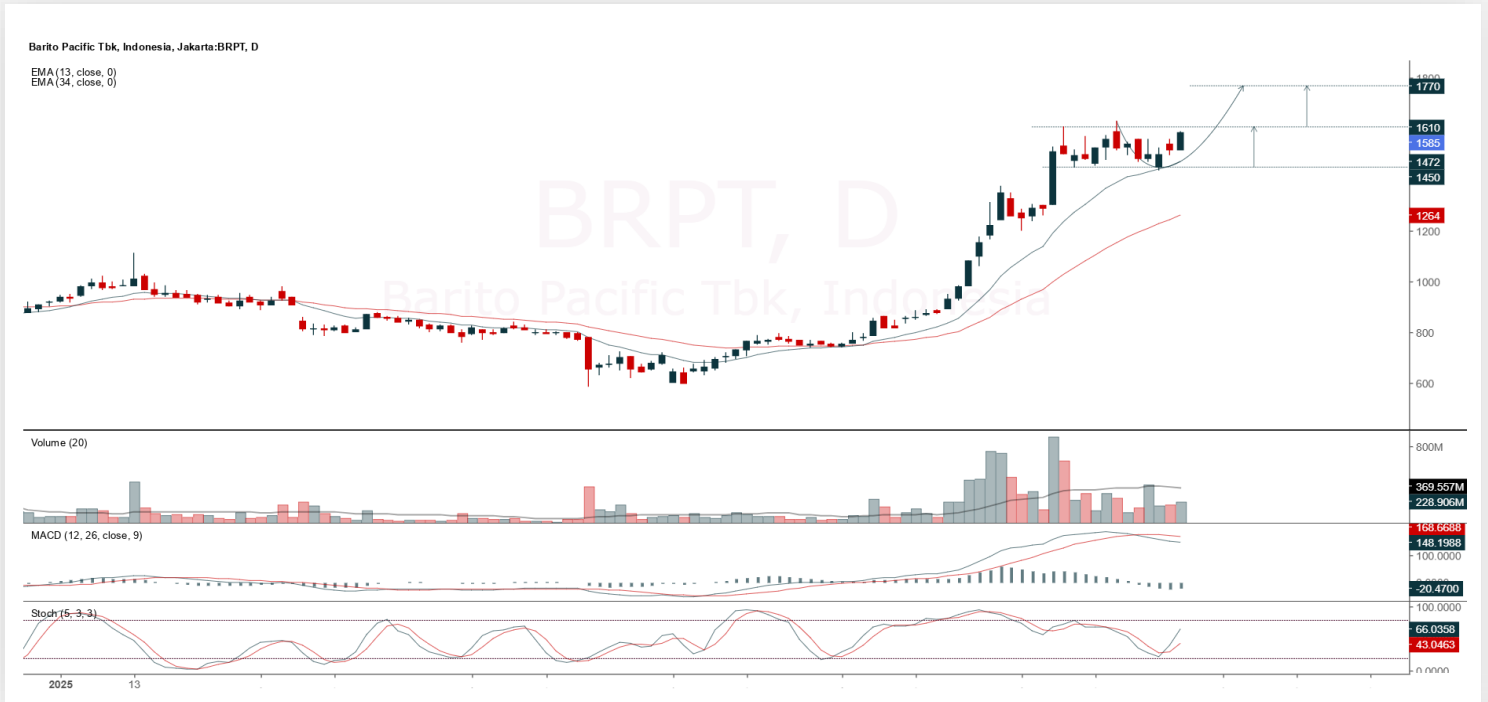
JCI corrected by 37 points / -0.54% to the level of 6,832.14, dragged down by net foreign selling worth IDR 931 billion (all market), although RUPIAH remained relatively stable at around 16,285 / USD. This position caused JCI to slip back below the MA50 Support / 6,845, which now acts as the nearest Resistance. **KIWOOM RESEARCH** considers the recent portfolio slimming action understandable, given that this week will end shortly (Friday is closed due to the 1 Muharram / Islamic New Year holiday). To avoid uncertainty over the weekend stemming from still fragile geopolitical conditions, a WAIT & SEE approach remains our recommendation while waiting for JCI to stabilize around the Support range of 6,770 – 6,745 again.

ADVICE: HOLD; WAIT & SEE.



BRPT

Barito Pacific Tbk.



(BRPT). Price rallied again and has the potential to test resistance. Strengthening is supported by a bullish stochastic indicator, MACD histogram moving in a positive direction, and increasing volume.

ADVICE: Trading buy or averaging up.

Entry Buy	Target Price	Support	Cut Loss
1,530 – 1,585	1,650 – 1,715	1,500 – 1,530	1,490



KLBF

Kalbe Farma Tbk.



(KLBF). Price formed another swing low and returned to an uptrend. Strengthening is supported by a bullish stochastic indicator and MACD histogram starting to move in a positive direction.

ADVICE: Trading buy or accumulation buy.

Entry Buy	Target Price	Support	Cut Loss
1,485 – 1,540	1,600 – 1,660	1,455 – 1,485	1,445



MTEL

Dayamitra Telekomunikasi Tbk.



(MTEL). Price broke out of the trendline resistance. Strengthening is supported by stochastic indicator starting a golden cross (bullish divergence) and MACD line flattening/potential golden cross (histogram moving in a positive direction).

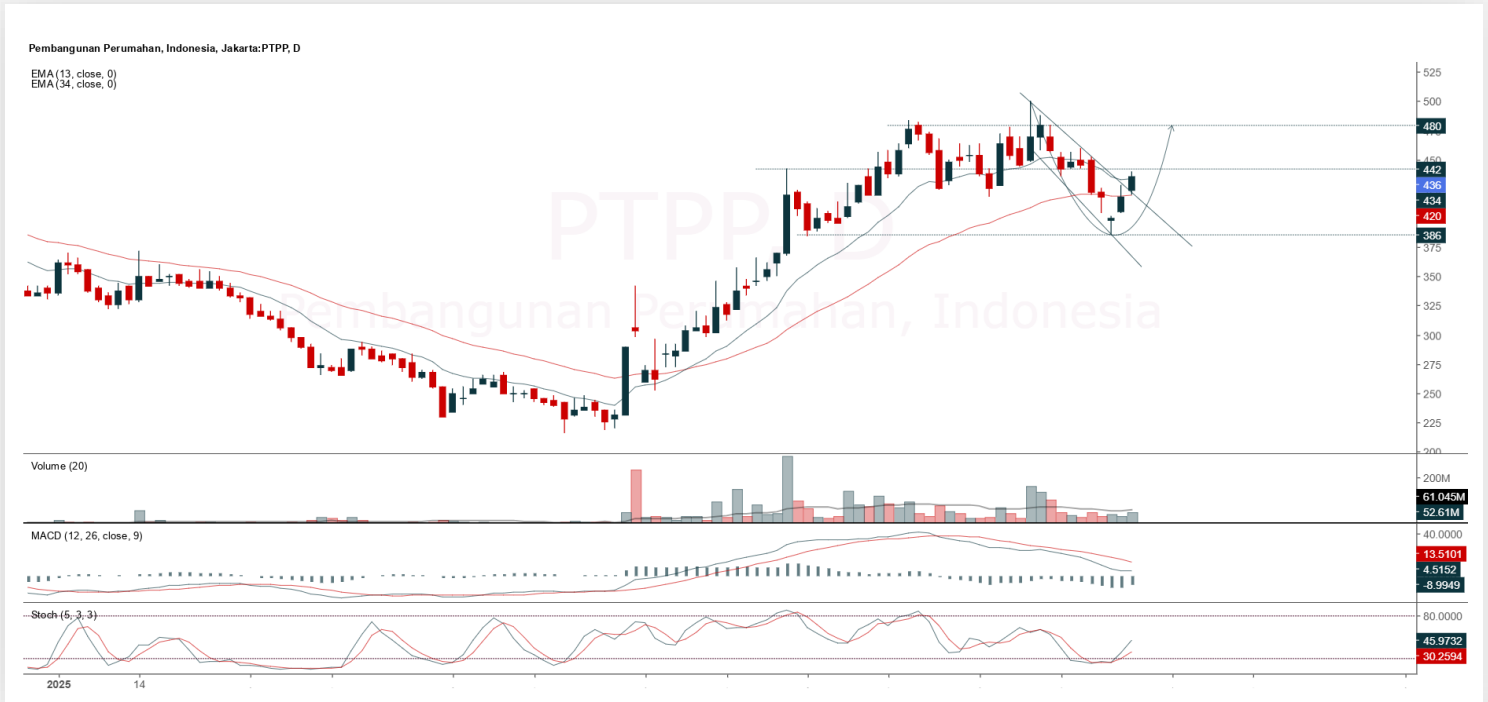
ADVICE: Trading buy and accumulation buy.

Entry Buy	Target Price	Support	Cut Loss
515 – 535	560 – 580	505 – 515	498



PTPP

PP (Persero) Tbk.



(PTPP). Price broke the nearest resistance again. Strengthening is supported by a bullish stochastic indicator, MACD histogram starting to move in a positive direction, and increasing volume.

ADVICE: Trading buy or accumulation buy.

Entry Buy	Target Price	Support	Cut Loss
420 – 436	454 – 472	412 – 420	408



Forecast – Technical Analysis

Ticker	MA5	RSI Rec	MACD Trend	Recomm,	Pivot Point	Support 1	Support 2	Resistance 1	Resistance 2	Stop Loss Level
JCI	Positive	Oversold	Negative	Spec. Buy	6,875	6,825	6,775	6,925	6,975	6,675
ACES	Positive	Trading	Negative	Hold	515	510	500	525	530	494
ADMR	Positive	Trading	Negative	Hold	1,010	990	965	1,035	1,055	950
ADRO	Positive	Oversold	Negative	Spec. Buy	1,810	1,775	1,735	1,850	1,885	1,705
AKRA	Positive	Oversold	Negative	Spec. Buy	1,195	1,155	1,115	1,235	1,275	1,095
AMMN	Negative	Overbought	Positive	Sell	8,275	8,075	7,900	8,450	8,650	7,775
AMRT	Positive	Trading	Negative	Hold	2,290	2,225	2,190	2,325	2,390	2,155
ANTM	Positive	Trading	Negative	Hold	3,020	2,895	2,780	3,135	3,260	2,735
ARTO	Positive	Trading	Negative	Hold	1,660	1,645	1,615	1,690	1,705	1,590
ASII	Positive	Oversold	Negative	Spec. Buy	4,490	4,445	4,380	4,555	4,600	4,310
BBCA	Positive	Oversold	Negative	Spec. Buy	8,650	8,525	8,350	8,825	8,950	8,225
BBNI	Positive	Oversold	Negative	Spec. Buy	4,145	4,085	4,005	4,225	4,285	3,940
BBRI	Positive	Oversold	Negative	Spec. Buy	3,790	3,745	3,690	3,845	3,890	3,630
BBTN	Positive	Trading	Negative	Hold	1,115	1,100	1,075	1,140	1,155	1,060
BMRI	Positive	Oversold	Negative	Spec. Buy	4,960	4,870	4,790	5,050	5,125	4,715
BRIS	Positive	Trading	Negative	Hold	2,555	2,510	2,455	2,610	2,655	2,420
BRPT	Positive	Overbought	Negative	Sell	1,555	1,515	1,475	1,595	1,635	1,450
CPIN	Positive	Trading	Negative	Hold	4,590	4,540	4,460	4,670	4,720	4,395
CTRA	Positive	Trading	Negative	Hold	940	920	905	955	975	890
ESSA	Positive	Trading	Positive	Spec. Buy	605	575	550	630	660	540
EXCL	Negative	Trading	Positive	Hold	2,240	2,215	2,200	2,255	2,280	2,165
GOTO	Positive	Oversold	Negative	Spec. Buy	58	58	56	60	60	55
ICBP	Positive	Oversold	Negative	Spec. Buy	10,325	10,200	10,050	10,475	10,600	9,900
INCO	Positive	Trading	Negative	Hold	3,150	3,085	3,020	3,215	3,280	2,970
INDF	Positive	Trading	Negative	Hold	8,050	7,975	7,925	8,100	8,175	7,800
INKP	Positive	Trading	Negative	Hold	5,750	5,625	5,525	5,850	5,975	5,450
ISAT	Positive	Trading	Negative	Hold	2,060	2,045	2,040	2,065	2,080	2,005
ITMG	Positive	Trading	Negative	Hold	22,275	22,100	21,925	22,450	22,625	21,600
JPFA	Positive	Oversold	Negative	Spec. Buy	1,445	1,415	1,390	1,470	1,500	1,365
JSMR	Positive	Oversold	Negative	Spec. Buy	3,660	3,595	3,530	3,725	3,790	3,475
KLBF	Positive	Trading	Negative	Hold	1,520	1,495	1,430	1,585	1,610	1,405
MAPA	Positive	Trading	Negative	Hold	660	635	610	685	710	600
MAPI	Positive	Oversold	Negative	Spec. Buy	1,135	1,105	1,075	1,165	1,195	1,060
MBMA	Positive	Trading	Negative	Hold	390	374	358	406	422	353
MDKA	Positive	Oversold	Negative	Spec. Buy	1,910	1,790	1,680	2,020	2,140	1,655
MEDC	Positive	Trading	Negative	Hold	1,285	1,245	1,190	1,340	1,380	1,175
PGAS	Positive	Oversold	Negative	Spec. Buy	1,560	1,530	1,495	1,595	1,625	1,475
PGEO	Positive	Trading	Negative	Hold	1,340	1,310	1,285	1,365	1,395	1,265
PTBA	Positive	Oversold	Negative	Spec. Buy	2,440	2,405	2,370	2,475	2,510	2,330
SIDO	Positive	Oversold	Negative	Spec. Buy	488	484	480	492	496	473
SMGR	Positive	Trading	Negative	Hold	2,620	2,580	2,540	2,660	2,700	2,500
SMRA	Positive	Oversold	Negative	Spec. Buy	376	367	360	383	392	354
TLKM	Positive	Trading	Negative	Hold	2,620	2,590	2,530	2,680	2,710	2,490
TOWR	Positive	Oversold	Negative	Spec. Buy	491	487	481	497	500	473
UNTR	Positive	Oversold	Negative	Spec. Buy	21,350	21,075	20,750	21,675	21,950	20,425
UNVR	Positive	Oversold	Negative	Spec. Buy	1,455	1,445	1,415	1,485	1,495	1,395



Kiwoom Research Team



Liza Camelia Suryanata

Head of Equity Research
liza.camelia@kiwoom.co.id



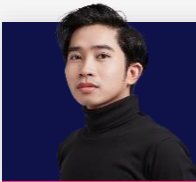
Sukarno Alatas

Senior Equity Research Analyst
sukarno@kiwoom.co.id



Abdul Azis Setyo W.

Equity Research Analyst
azis@kiwoom.co.id



Miftahul Khaer

Equity Research Analyst
khaer.miftahul@kiwoom.co.id



Wahyu Saputra

Equity Research Associate
wahyu.saputra@kiwoom.co.id



HEAD OFFICE

Treasury Tower 27th Floor Unit A, District 8 Kawasan SCBD Lot 28,
Jl.Jend.Sudirman Kav 52-53, Jakarta Selatan 12190

Tel : (021) 5010 5800
Fax : (021) 5010 5820
Email : cs@kiwoom.co.id

PT Kiwoom Sekuritas Indonesia is licensed and supervised by the Financial Services Authority (OJK)

OTHER DISCLOSURES

All Kiwoom's research reports made available to clients are simultaneously available on our own website <http://www.kiwoom.co.id/>. Not all research content is redistributed, e-mailed or made available to third-party aggregators. For all research reports available on a particular stock, please contact your sales representative. Any data discrepancies in this report could be the result of different calculations and/or adjustments.

DISCLAIMER

This report has been prepared and issued by PT Kiwoom Sekuritas Indonesia. Information has been obtained from sources believed to be reliable but Kiwoom Securities do not warrant its completeness or accuracy. Forward-looking information or statements in this report contain information that is based on forecast of future results, estimates of amounts not yet determinable, assumptions, and therefore involve known and unknown risks and uncertainties which may cause the actual results, performance or achievements of their subject matter to be materially different from current expectations. To the fullest extent allowed by law, PT Kiwoom Sekuritas Indonesia shall not be liable for any direct, indirect or consequential losses, loss of profits, damages, costs or expenses incurred or suffered by any person or organization arising from reliance on or use of any information contained on this report. The information that we provide should not be construed in any manner whatsoever as, personalized advice. No mention of a particular security in this report constitutes a recommendation to buy, sell or hold that or any security, or that any particular security, portfolio of securities, transaction or investment strategy is suitable for any specific person. This report is being supplied to you solely for your information and may not be reproduced by, further distributed to or published in whole or in part by, any other person.