



KSI Research

**KIWOOM**  
SEKURITAS INDONESIA

# Technical Recommendation

Jakarta Composite Index Range Today

**6,850 – 6,820**

Support

**6,980 – 7,000 / 7,070**

Resistance

Published on 30 June 2025



## Jakarta Composite Index

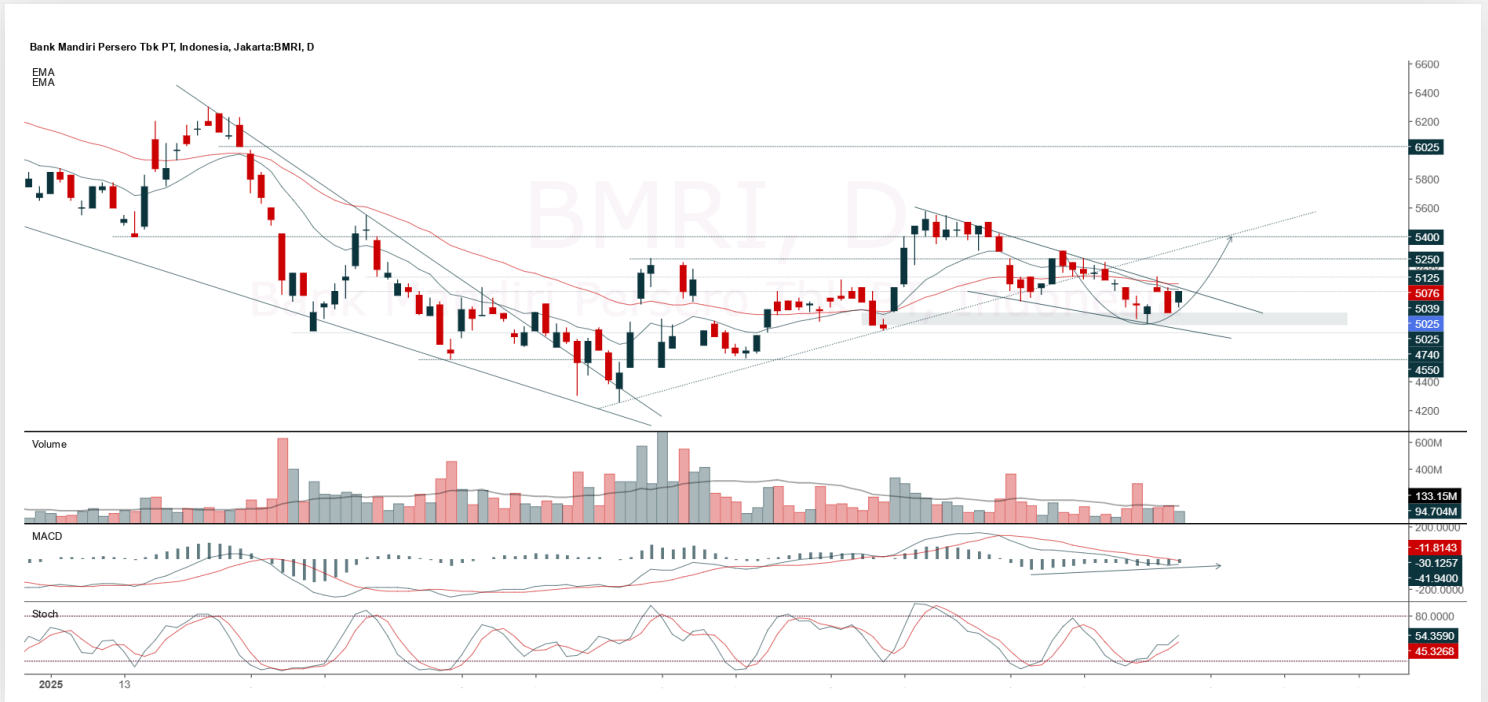
JCI closed one day earlier last week on Thursday (26/06/25) due to a national holiday on Friday commemorating the Islamic New Year (1 Muharram). JCI rose by 65.25pts / nearly 1% to the level of 6,897.40, accompanied by a fairly massive Foreign Net Buy worth IDR 2.02 trillion (all market). Rupiah exchange rate enjoyed the effect of a weakening Dollar, thus steady at 16,175 / USD. JCI's closing position, rebounding from the MA50 Support (6,850), seems likely to guarantee further strengthening on Monday, closing the first semester with a greater probability of greening. The nearest Moving Average resistance: MA10 / 6,980 up to the psychological level of 7,000 will be the nearest target. **KIWOOM RESEARCH** advises gradual Average Up, as the wisest investment/trading suggestion at this time.

**ADVICE:** AVERAGE UP Accordingly; SPECULATIVE BUY.



## BMRI

Bank Mandiri (Persero) Tbk.



**(BMRI).** Price rallied again after closing the gap or its support area. Strengthening is supported by the bullish stochastic indicator and a MACD histogram moving in a positive direction.

**ADVICE:** Trading buy or accumulate buy.

Entry Buy	Target Price	Support	Cut Loss
4,850 – 5,025	5,250 – 5,475	4,750 – 4,850	4,730



## JPFA

Japfa Comfeed Indonesia Tbk.



**(JPFA).** Price formed a swing low and is testing a break of the trendline resistance. Strengthening is supported by a bullish stochastic indicator, a MACD line with potential golden cross (histogram starting to move in a positive direction), and increasing volume.

**ADVICE:** Trading buy or accumulate buy.

Entry Buy	Target Price	Support	Cut Loss
1,445 – 1,495	1,555 – 1,615	1,415 – 1,445	1,405



## MTEL

Dayamitra Telekomunikasi Tbk.



**(MTEL).** Price continued to rally after successfully breaking out the trendline resistance. Strengthening is supported by a still bullish stochastic indicator and a MACD line flattening/potential golden cross (histogram moving in a positive direction).

**ADVICE:** Trading buy and accumulate buy.

Entry Buy	Target Price	Support	Cut Loss
535 – 555	580 – 605	525 – 535	515



## MYOR

Mayora Indah Tbk.



**(MYOR).** Price rallied again and broke out the trendline resistance. Strengthening is supported by a bullish stochastic indicator, a MACD line golden cross (histogram starting to move in a positive direction), and increasing volume.

**ADVICE:** Trading buy or accumulate buy.

Entry Buy	Target Price	Support	Cut Loss
2,030 – 2,100	2,190 – 2,280	1,985 – 2,030	1,975



## Forecast – Technical Analysis

Ticker	MA5	RSI Rec	MACD Trend	Recomm,	Pivot Point	Support 1	Support 2	Resistance 1	Resistance 2	Stop Loss Level
JCI	Positive	Trading	Negative	Hold	6,875	6,825	6,775	6,900	6,950	6,675
ACES	Positive	Oversold	Negative	Spec. Buy	489	480	471	498	505	464
ADMR	Positive	Trading	Negative	Hold	995	985	975	1,005	1,015	960
ADRO	Positive	Oversold	Negative	Spec. Buy	1,790	1,780	1,765	1,805	1,815	1,740
AKRA	Positive	Trading	Negative	Hold	1,175	1,150	1,130	1,195	1,220	1,110
AMMN	Negative	Overbought	Positive	Sell	8,425	8,300	8,100	8,625	8,750	7,975
AMRT	Positive	Trading	Negative	Hold	2,290	2,260	2,200	2,350	2,380	2,165
ANTM	Positive	Trading	Negative	Hold	2,920	2,865	2,780	3,005	3,060	2,735
ARTO	Positive	Trading	Negative	Hold	1,680	1,655	1,615	1,720	1,745	1,590
ASII	Positive	Oversold	Negative	Spec. Buy	4,440	4,425	4,400	4,465	4,480	4,330
BBCA	Positive	Trading	Negative	Hold	8,600	8,525	8,475	8,650	8,725	8,325
BBNI	Positive	Oversold	Negative	Spec. Buy	4,100	4,080	4,030	4,150	4,170	3,970
BBRI	Positive	Trading	Negative	Hold	3,800	3,765	3,720	3,845	3,880	3,660
BBTN	Positive	Trading	Negative	Hold	1,125	1,100	1,070	1,155	1,180	1,055
BMRI	Positive	Trading	Negative	Hold	4,980	4,930	4,865	5,050	5,100	4,790
BRIS	Negative	Trading	Negative	Sell	2,555	2,505	2,435	2,625	2,675	2,395
BRPT	Negative	Overbought	Negative	Strong Sell	1,595	1,575	1,550	1,620	1,640	1,525
CPIN	Positive	Trading	Negative	Hold	4,615	4,575	4,505	4,685	4,725	4,435
CTRA	Positive	Trading	Negative	Hold	930	900	865	965	995	850
ESSA	Positive	Trading	Negative	Hold	575	565	545	595	605	540
EXCL	Negative	Trading	Positive	Hold	2,240	2,230	2,210	2,260	2,270	2,175
GOTO	Positive	Oversold	Negative	Spec. Buy	59	58	56	61	62	55
ICBP	Positive	Oversold	Negative	Spec. Buy	10,125	9,950	9,775	10,300	10,475	9,625
INCO	Positive	Trading	Negative	Hold	3,175	3,080	3,005	3,250	3,345	2,960
INDF	Positive	Trading	Negative	Hold	8,025	7,975	7,850	8,150	8,200	7,750
INKP	Negative	Trading	Negative	Sell	5,700	5,650	5,600	5,750	5,800	5,500
ISAT	Positive	Trading	Negative	Hold	2,080	2,035	2,000	2,115	2,160	1,970
ITMG	Positive	Trading	Negative	Hold	22,075	22,000	21,950	22,125	22,200	21,600
JPFA	Positive	Oversold	Negative	Spec. Buy	1,465	1,435	1,400	1,500	1,530	1,380
JSMR	Positive	Oversold	Negative	Spec. Buy	3,590	3,570	3,540	3,620	3,640	3,485
KLBF	Positive	Trading	Negative	Hold	1,505	1,490	1,440	1,555	1,570	1,420
MAPA	Positive	Trading	Negative	Hold	640	630	615	655	665	605
MAPI	Positive	Oversold	Negative	Spec. Buy	1,120	1,100	1,085	1,135	1,155	1,065
MBMA	Positive	Trading	Negative	Hold	391	377	365	403	417	359
MDKA	Positive	Oversold	Negative	Spec. Buy	1,805	1,780	1,725	1,860	1,885	1,700
MEDC	Positive	Trading	Negative	Hold	1,265	1,250	1,230	1,285	1,300	1,210
PGAS	Positive	Oversold	Negative	Spec. Buy	1,545	1,525	1,515	1,555	1,575	1,490
PGEO	Positive	Trading	Negative	Hold	1,330	1,315	1,290	1,355	1,370	1,270
PTBA	Positive	Oversold	Negative	Spec. Buy	2,405	2,390	2,365	2,430	2,445	2,330
SIDO	Positive	Oversold	Negative	Spec. Buy	487	483	481	489	493	473
SMGR	Positive	Trading	Negative	Hold	2,585	2,550	2,525	2,610	2,645	2,485
SMRA	Positive	Oversold	Negative	Spec. Buy	371	366	363	374	379	358
TLKM	Positive	Trading	Negative	Hold	2,660	2,605	2,540	2,725	2,780	2,500
TOWR	Positive	Oversold	Negative	Spec. Buy	498	486	476	510	520	469
UNTR	Positive	Oversold	Negative	Spec. Buy	21,075	21,025	20,925	21,175	21,225	20,600
UNVR	Positive	Oversold	Negative	Spec. Buy	1,450	1,440	1,415	1,475	1,485	1,395

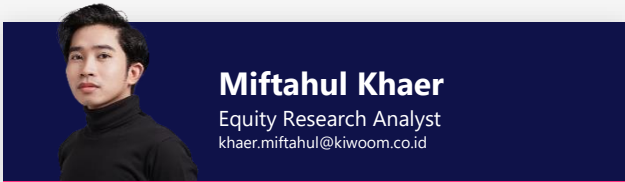


# Technical Recommendation

Published on 30 June 2025

**KIWOOM**  
SEKURITAS INDONESIA

## Kiwoom Research Team



### HEAD OFFICE

Treasury Tower 27th Floor Unit A, District 8 Kawasan SCBD Lot 28,  
Jl.Jend.Sudirman Kav 52-53, Jakarta Selatan 12190

Tel : (021) 5010 5800  
Fax : (021) 5010 5820  
Email : [cs@kiwoom.co.id](mailto:cs@kiwoom.co.id)

PT Kiwoom Sekuritas Indonesia is licensed and supervised by the Financial Services Authority (OJK)

### OTHER DISCLOSURES

All Kiwoom's research reports made available to clients are simultaneously available on our own website <http://www.kiwoom.co.id/>. Not all research content is redistributed, e-mailed or made available to third-party aggregators. For all research reports available on a particular stock, please contact your sales representative. Any data discrepancies in this report could be the result of different calculations and/or adjustments.

### DISCLAIMER

This report has been prepared and issued by PT Kiwoom Sekuritas Indonesia. Information has been obtained from sources believed to be reliable but Kiwoom Securities do not warrant its completeness or accuracy. Forward-looking information or statements in this report contain information that is based on forecast of future results, estimates of amounts not yet determinable, assumptions, and therefore involve known and unknown risks and uncertainties which may cause the actual results, performance or achievements of their subject matter to be materially different from current expectations. To the fullest extent allowed by law, PT Kiwoom Sekuritas Indonesia shall not be liable for any direct, indirect or consequential losses, loss of profits, damages, costs or expenses incurred or suffered by any person or organization arising from reliance on or use of any information contained on this report. The information that we provide should not be construed in any manner whatsoever as, personalized advice. No mention of a particular security in this report constitutes a recommendation to buy, sell or hold that or any security, or that any particular security, portfolio of securities, transaction or investment strategy is suitable for any specific person. This report is being supplied to you solely for your information and may not be reproduced by, further distributed to or published in whole or in part by, any other person.