



KSI Research

Technical Recommendation

Jakarta Composite Index Range Today

6,840 / 6,770 – 6,700
Support

6,900 – 6,910 / 7,000 – 7,010
Resistance

Published on 03 July 2025



Jakarta Composite Index

JCI once again showed weakness, pushed back even further by the crucial Moving Average Resistance around the 6,900 – 6,910 area. With a decline of 34pts / -0.5% to the level of 6,881.25, JCI's closing was already below the previous day's Low (6,885); thus, according to risk-management principles, the Trailing Stop (Cut Loss) trigger has been activated.

For safety, **KIWOOM RESEARCH** suggests reducing portfolio positions, especially in stocks that have already broken their Support levels, to anticipate further consolidation towards the 6,770 – 6,700 area; the base from the previous lowest levels.

ADVICE: *REDUCE POSITION (Gradually), WAIT & SEE.*



ASII

Astra International Tbk.



(ASII). Price formed a swing low. Price is supported by a bullish stochastic indicator, MACD line golden cross (histogram turning positive again), and increasing volume.

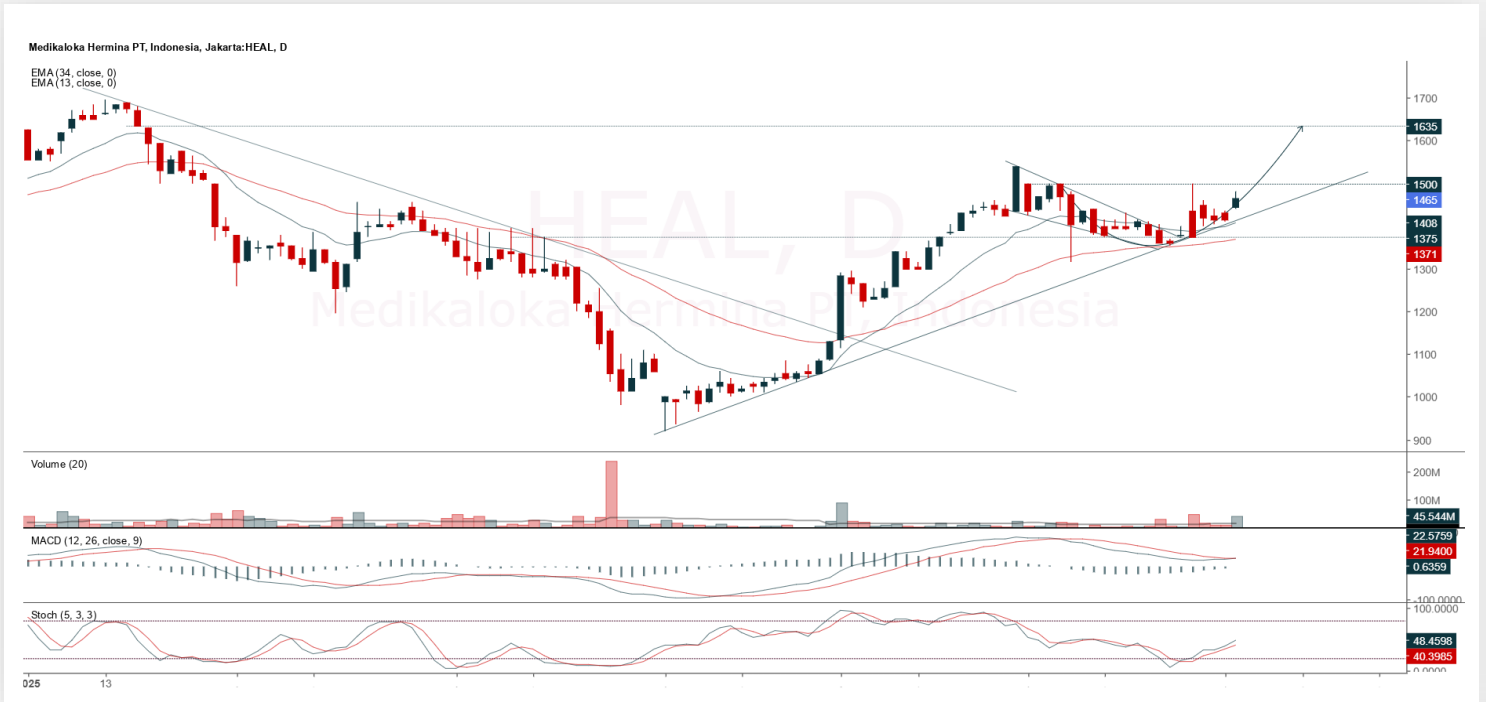
ADVICE: Trading buy or accumulation buy.

Entry Buy	Target Price	Support	Cut Loss
4,380 – 4,540	4,730 – 4,920	4,290 – 4,380	4,270



HEAL

Medikaloka Hermina Tbk.



(HEAL). Price rallied again and is testing the nearest resistance. Price is supported by a bullish stochastic indicator, MACD histogram moving in a positive direction, and increasing volume.

ADVICE: Accumulation buy or trading buy.

Entry Buy	Target Price	Support	Cut Loss
1,415 – 1,465	1,525 – 1,585	1,385 – 1,415	1,375



MAPI

Mitra Adiperkasa Tbk.



(MAPI). Price rallied again and is testing the nearest resistance. Price is supported by a bullish stochastic indicator, MACD line golden cross (histogram turning positive again).

ADVICE: Trading buy or accumulation buy.

Entry Buy	Target Price	Support	Cut Loss
1,205 – 1,250	1,300 – 1,350	1,180 – 1,205	1,170



TOWR

Sarana Menara Nusantara Tbk.



(TOWR). Price strengthened and broke the nearest resistance. Price is supported by a bullish stochastic indicator, MACD line golden cross (histogram starting to move positive), and significantly increasing volume.

ADVICE: Trading buy or accumulation buy.

Entry Buy	Target Price	Support	Cut Loss
530 – 550	575 – 600	520 – 530	510



Forecast – Technical Analysis

Ticker	MA5	RSI Rec	MACD Trend	Recomm,	Pivot Point	Support 1	Support 2	Resistance 1	Resistance 2	Stop Loss Level
JCI	Negative	Trading	Negative	Sell	6,875	6,850	6,825	6,925	6,950	6,700
ACES	Positive	Oversold	Negative	Spec. Buy	493	487	481	499	505	473
ADMR	Positive	Oversold	Negative	Spec. Buy	955	920	885	990	1,025	870
ADRO	Positive	Oversold	Negative	Spec. Buy	1,805	1,775	1,745	1,835	1,865	1,720
AKRA	Positive	Trading	Negative	Hold	1,175	1,160	1,150	1,185	1,200	1,130
AMMN	Negative	Overbought	Positive	Sell	8,600	8,475	8,300	8,775	8,900	8,175
AMRT	Negative	Trading	Negative	Sell	2,380	2,345	2,290	2,435	2,470	2,255
ANTM	Positive	Trading	Negative	Hold	3,020	2,970	2,910	3,080	3,130	2,865
ARTO	Negative	Trading	Positive	Hold	1,760	1,705	1,645	1,820	1,875	1,620
ASII	Negative	Trading	Positive	Hold	4,495	4,440	4,385	4,550	4,605	4,320
BBCA	Positive	Trading	Negative	Hold	8,625	8,575	8,525	8,675	8,725	8,400
BBNI	Positive	Oversold	Negative	Spec. Buy	4,010	3,980	3,940	4,050	4,080	3,880
BBRI	Positive	Oversold	Negative	Spec. Buy	3,670	3,635	3,610	3,695	3,730	3,555
BBTN	Positive	Trading	Negative	Hold	1,090	1,080	1,060	1,110	1,120	1,045
BMRI	Positive	Oversold	Negative	Spec. Buy	4,745	4,720	4,685	4,780	4,805	4,615
BRIS	Positive	Oversold	Negative	Spec. Buy	2,485	2,440	2,395	2,530	2,575	2,360
BRPT	Negative	Overbought	Negative	Strong Sell	1,620	1,530	1,440	1,710	1,800	1,420
CPIN	Negative	Trading	Negative	Sell	4,630	4,600	4,520	4,710	4,740	4,450
CTRA	Negative	Trading	Negative	Sell	960	945	930	975	990	915
ESSA	Positive	Trading	Negative	Hold	580	565	550	595	610	540
EXCL	Negative	Trading	Positive	Hold	2,300	2,265	2,230	2,335	2,370	2,195
GOTO	Negative	Oversold	Positive	Spec. Buy	58	56	55	59	61	54
ICBP	Negative	Trading	Positive	Hold	10,475	10,325	10,200	10,600	10,750	10,050
INCO	Negative	Trading	Negative	Sell	3,460	3,405	3,340	3,525	3,580	3,285
INDF	Negative	Trading	Negative	Sell	7,975	7,900	7,800	8,075	8,150	7,675
INKP	Positive	Oversold	Negative	Spec. Buy	5,525	5,425	5,350	5,600	5,700	5,275
ISAT	Negative	Trading	Negative	Sell	2,125	2,080	2,045	2,160	2,205	2,015
ITMG	Positive	Trading	Negative	Hold	22,200	22,050	21,925	22,325	22,475	21,600
JPFA	Negative	Oversold	Positive	Spec. Buy	1,455	1,435	1,415	1,475	1,495	1,390
JSMR	Positive	Oversold	Negative	Spec. Buy	3,590	3,545	3,510	3,625	3,670	3,455
KLBF	Negative	Trading	Negative	Sell	1,505	1,485	1,450	1,540	1,560	1,430
MAPA	Negative	Trading	Positive	Hold	715	695	675	735	755	665
MAPI	Negative	Trading	Positive	Hold	1,225	1,200	1,155	1,270	1,295	1,140
MBMA	Negative	Trading	Negative	Sell	443	425	417	451	469	410
MDKA	Positive	Trading	Negative	Hold	2,020	1,960	1,920	2,060	2,120	1,890
MEDC	Positive	Trading	Negative	Hold	1,245	1,230	1,200	1,275	1,290	1,180
PGAS	Positive	Trading	Negative	Hold	1,585	1,575	1,565	1,595	1,605	1,540
PGEO	Negative	Trading	Negative	Sell	1,375	1,355	1,325	1,405	1,425	1,305
PTBA	Positive	Oversold	Negative	Spec. Buy	2,450	2,420	2,390	2,480	2,510	2,355
SIDO	Negative	Oversold	Positive	Spec. Buy	488	484	480	492	496	473
SMGR	Negative	Trading	Negative	Sell	2,635	2,595	2,545	2,685	2,725	2,505
SMRA	Positive	Oversold	Negative	Spec. Buy	373	368	363	378	383	358
TLKM	Negative	Trading	Positive	Hold	2,790	2,755	2,700	2,845	2,880	2,655
TOWR	Negative	Trading	Positive	Hold	530	469	424	575	635	417
UNTR	Negative	Trading	Positive	Hold	21,400	21,200	21,000	21,600	21,800	20,700
UNVR	Negative	Trading	Negative	Sell	1,485	1,435	1,405	1,515	1,565	1,380



Technical Recommendation

Published on 03 July 2025

KIWOOM
SEKURITAS INDONESIA

Kiwoom Research Team



HEAD OFFICE

Treasury Tower 27th Floor Unit A, District 8 Kawasan SCBD Lot 28,
Jl.Jend.Sudirman Kav 52-53, Jakarta Selatan 12190

Tel : (021) 5010 5800
Fax : (021) 5010 5820
Email : cs@kiwoom.co.id

PT Kiwoom Sekuritas Indonesia is licensed and supervised by the Financial Services Authority (OJK)

OTHER DISCLOSURES

All Kiwoom's research reports made available to clients are simultaneously available on our own website <http://www.kiwoom.co.id/>. Not all research content is redistributed, e-mailed or made available to third-party aggregators. For all research reports available on a particular stock, please contact your sales representative. Any data discrepancies in this report could be the result of different calculations and/or adjustments.

DISCLAIMER

This report has been prepared and issued by PT Kiwoom Sekuritas Indonesia. Information has been obtained from sources believed to be reliable but Kiwoom Securities do not warrant its completeness or accuracy. Forward-looking information or statements in this report contain information that is based on forecast of future results, estimates of amounts not yet determinable, assumptions, and therefore involve known and unknown risks and uncertainties which may cause the actual results, performance or achievements of their subject matter to be materially different from current expectations. To the fullest extent allowed by law, PT Kiwoom Sekuritas Indonesia shall not be liable for any direct, indirect or consequential losses, loss of profits, damages, costs or expenses incurred or suffered by any person or organization arising from reliance on or use of any information contained on this report. The information that we provide should not be construed in any manner whatsoever as, personalized advice. No mention of a particular security in this report constitutes a recommendation to buy, sell or hold that or any security, or that any particular security, portfolio of securities, transaction or investment strategy is suitable for any specific person. This report is being supplied to you solely for your information and may not be reproduced by, further distributed to or published in whole or in part by, any other person.