



KSI Research



# Technical Recommendation

Jakarta Composite Index Range Today

6,840 – 6,820 / 6,770 – 6,700

Support

6,880 – 6,925 / 7,000

Resistance

Published on 07 July 2025



## Jakarta Composite Index

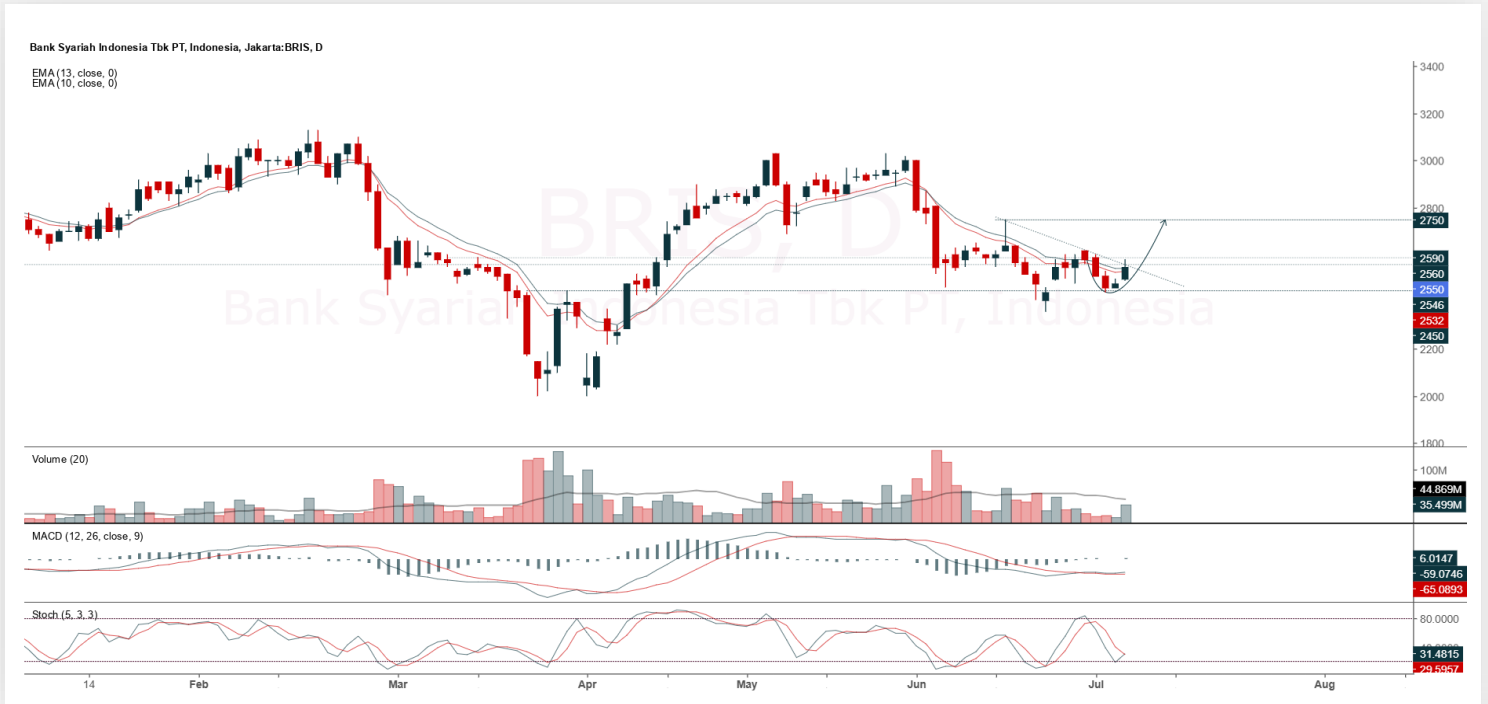
JCI closed last week corrected by nearly 1%, with Friday's trading still staying in negative territory, down 12.86 pts / -0.19% to the level of 6,865.19. **KIWOOM RESEARCH** assesses that JCI's closing position remains vulnerable to further consolidation toward 6,770 – 6,700, unless it manages to close firmly above the crucial Moving Average resistance >6,880 – 6,925. A Wait & See approach is still more appropriate at this time in connection with global market reactions to a number of sentiment-shaping focuses, including: Indonesia's Foreign Exchange Reserves & Consumer Confidence, China's Inflation, and the FOMC Meeting Minutes; as well as the beginning of the Q2 earnings reporting season.

**ADVICE:** WAIT & SEE; HOLD.



## BRIS

Bank Syariah Indonesia Tbk.



**(BRIS).** Price formed a swing low and has the potential to test the nearest resistance. Price is supported by the stochastic indicator moving in a golden cross, MACD line golden cross (histogram turning positive again), and increasing volume.

**ADVICE:** Trading buy or accumulation buy.

Entry Buy	Target Price	Support	Cut Loss
2,460 – 2,550	2,650 – 2,750	2,410 – 2,460	2,390



## GOTO

GoTo Gojek Tokopedia Tbk.



**(GOTO).** Price has the potential to form a double bottom pattern. Price is supported by the stochastic indicator potentially golden cross and MACD line is still bullish.

**ADVICE:** Accumulation buy or trading buy.

**Entry Buy**

**Target Price**

**Support**

**Cut Loss**

**57 – 59**

**62 – 65**

**56 – 57**

**54**



## INCO

Vale Indonesia Tbk.



**(INCO).** Price rallied again and broke out of the inside bar candle. Price is supported by the stochastic indicator moving bullish, MACD line golden cross (histogram turning positive again), and increasing volume.

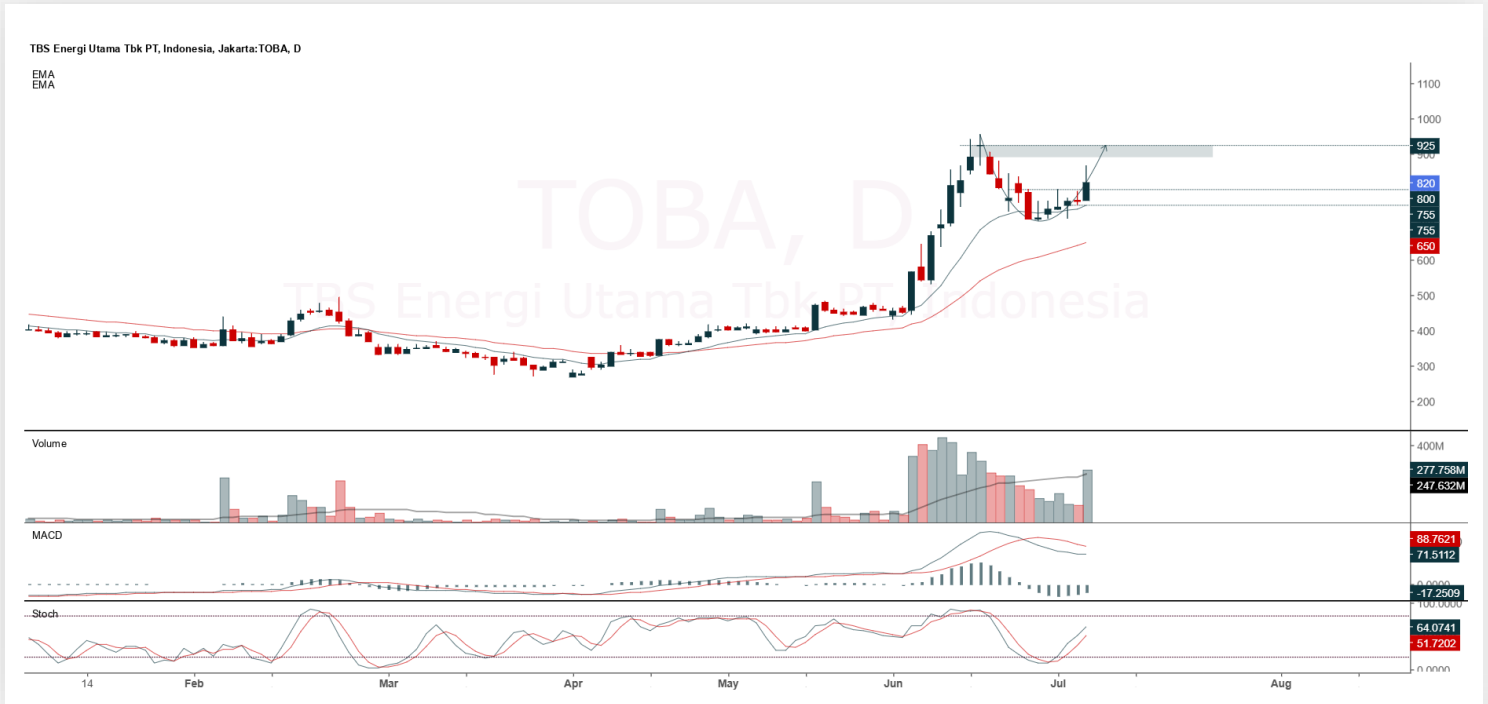
**ADVICE:** Trading buy or accumulation buy.

Entry Buy	Target Price	Support	Cut Loss
3,440 – 3,560	3,710 – 3,860	3,370 – 3,440	3,350



## TOBA

TBS Energi Utama Tbk.



**(TOBA).** Price broke out of the inside bar candle. Price is supported by the stochastic indicator moving bullish, MACD histogram moving in a positive direction, and significantly increasing volume.

**ADVICE:** Trading buy or accumulation buy.

Entry Buy	Target Price	Support	Cut Loss
790 – 820	855 – 890	775 – 790	765

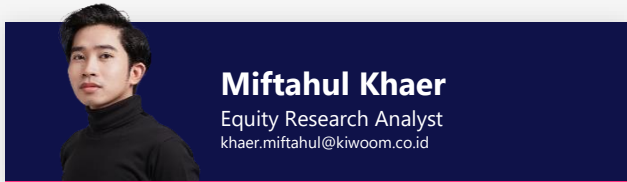


## Forecast – Technical Analysis

Ticker	MA5	RSI Rec	MACD Trend	Recomm,	Pivot Point	Support 1	Support 2	Resistance 1	Resistance 2	Stop Loss Level
JCI	Positive	Trading	Negative	Hold	6,875	6,850	6,800	6,925	6,950	6,700
ACES	Positive	Oversold	Negative	Spec. Buy	487	482	477	492	497	470
ADMIR	Positive	Trading	Negative	Hold	965	955	945	975	985	930
ADRO	Positive	Oversold	Negative	Spec. Buy	1,755	1,740	1,720	1,775	1,790	1,690
AKRA	Positive	Trading	Negative	Hold	1,185	1,170	1,155	1,200	1,215	1,140
AMMN	Negative	Overbought	Positive	Sell	8,525	8,425	8,325	8,625	8,725	8,200
AMRT	Negative	Trading	Negative	Sell	2,355	2,320	2,285	2,390	2,425	2,250
ANTM	Negative	Trading	Negative	Sell	3,060	3,000	2,940	3,120	3,180	2,895
ARTO	Negative	Trading	Positive	Hold	1,740	1,710	1,680	1,770	1,800	1,655
ASII	Negative	Trading	Positive	Hold	4,610	4,570	4,530	4,650	4,690	4,460
BBCA	Negative	Trading	Negative	Sell	8,650	8,575	8,500	8,725	8,800	8,350
BBNI	Positive	Oversold	Negative	Spec. Buy	3,985	3,955	3,925	4,015	4,045	3,865
BBRI	Positive	Oversold	Negative	Spec. Buy	3,680	3,645	3,620	3,705	3,740	3,565
BBTN	Positive	Trading	Negative	Hold	1,085	1,070	1,060	1,095	1,110	1,045
BMRI	Positive	Oversold	Negative	Spec. Buy	4,745	4,700	4,655	4,790	4,835	4,585
BRIS	Positive	Trading	Positive	Spec. Buy	2,530	2,480	2,440	2,570	2,620	2,405
BRPT	Positive	Overbought	Negative	Sell	1,555	1,525	1,510	1,570	1,600	1,485
CPIN	Negative	Trading	Negative	Sell	4,670	4,580	4,490	4,760	4,850	4,425
CTRA	Negative	Trading	Positive	Hold	980	970	960	990	1,000	945
ESSA	Negative	Trading	Negative	Sell	585	570	560	595	610	550
EXCL	Negative	Overbought	Positive	Sell	2,295	2,275	2,235	2,335	2,355	2,200
GOTO	Positive	Oversold	Positive	Buy	58	57	55	60	61	54
ICBP	Negative	Trading	Positive	Hold	10,700	10,575	10,450	10,825	10,950	10,275
INCO	Negative	Trading	Negative	Sell	3,530	3,475	3,420	3,585	3,640	3,365
INDF	Negative	Trading	Negative	Sell	8,125	8,025	7,925	8,225	8,325	7,800
INKP	Positive	Oversold	Negative	Spec. Buy	5,425	5,350	5,250	5,525	5,600	5,175
ISAT	Negative	Trading	Negative	Sell	2,100	2,080	2,060	2,120	2,140	2,030
ITMG	Negative	Trading	Negative	Sell	22,125	22,025	21,975	22,175	22,275	21,625
JPFA	Positive	Trading	Positive	Spec. Buy	1,490	1,480	1,465	1,505	1,515	1,440
JSMR	Negative	Oversold	Negative	Spec. Buy	3,580	3,560	3,550	3,590	3,610	3,495
KLBF	Negative	Trading	Negative	Sell	1,540	1,515	1,490	1,565	1,590	1,465
MAPA	Negative	Trading	Positive	Hold	730	715	710	735	750	695
MAPI	Negative	Trading	Positive	Hold	1,235	1,210	1,175	1,270	1,295	1,160
MBMA	Negative	Overbought	Positive	Sell	463	452	439	476	487	432
MDKA	Negative	Trading	Negative	Sell	2,080	2,025	1,970	2,135	2,190	1,940
MEDC	Positive	Trading	Negative	Hold	1,250	1,240	1,220	1,270	1,280	1,200
PGAS	Negative	Trading	Negative	Sell	1,595	1,580	1,560	1,615	1,630	1,535
PGEO	Negative	Trading	Negative	Sell	1,435	1,405	1,370	1,470	1,500	1,350
PTBA	Negative	Oversold	Negative	Spec. Buy	2,430	2,420	2,410	2,440	2,450	2,375
SIDO	Negative	Oversold	Positive	Spec. Buy	488	486	484	490	492	477
SMGR	Negative	Trading	Negative	Sell	2,675	2,640	2,605	2,710	2,745	2,565
SMRA	Negative	Oversold	Negative	Spec. Buy	368	364	362	370	374	357
TLKM	Negative	Trading	Negative	Sell	2,670	2,620	2,570	2,720	2,770	2,530
TOWR	Negative	Trading	Positive	Hold	530	515	505	540	555	495
UNTR	Negative	Trading	Positive	Hold	21,500	21,450	21,325	21,625	21,675	21,000
UNVR	Negative	Trading	Positive	Hold	1,565	1,530	1,475	1,620	1,655	1,455



## Kiwoom Research Team



### HEAD OFFICE

Treasury Tower 27th Floor Unit A, District 8 Kawasan SCBD Lot 28,  
Jl.Jend.Sudirman Kav 52-53, Jakarta Selatan 12190

Tel : (021) 5010 5800  
Fax : (021) 5010 5820  
Email : [cs@kiwoom.co.id](mailto:cs@kiwoom.co.id)

PT Kiwoom Sekuritas Indonesia is licensed and supervised by the Financial Services Authority (OJK)

### OTHER DISCLOSURES

All Kiwoom's research reports made available to clients are simultaneously available on our own website <http://www.kiwoom.co.id/>. Not all research content is redistributed, e-mailed or made available to third-party aggregators. For all research reports available on a particular stock, please contact your sales representative. Any data discrepancies in this report could be the result of different calculations and/or adjustments.

### DISCLAIMER

This report has been prepared and issued by PT Kiwoom Sekuritas Indonesia. Information has been obtained from sources believed to be reliable but Kiwoom Securities do not warrant its completeness or accuracy. Forward-looking information or statements in this report contain information that is based on forecast of future results, estimates of amounts not yet determinable, assumptions, and therefore involve known and unknown risks and uncertainties which may cause the actual results, performance or achievements of their subject matter to be materially different from current expectations. To the fullest extent allowed by law, PT Kiwoom Sekuritas Indonesia shall not be liable for any direct, indirect or consequential losses, loss of profits, damages, costs or expenses incurred or suffered by any person or organization arising from reliance on or use of any information contained on this report. The information that we provide should not be construed in any manner whatsoever as, personalized advice. No mention of a particular security in this report constitutes a recommendation to buy, sell or hold that or any security, or that any particular security, portfolio of securities, transaction or investment strategy is suitable for any specific person. This report is being supplied to you solely for your information and may not be reproduced by, further distributed to or published in whole or in part by, any other person.