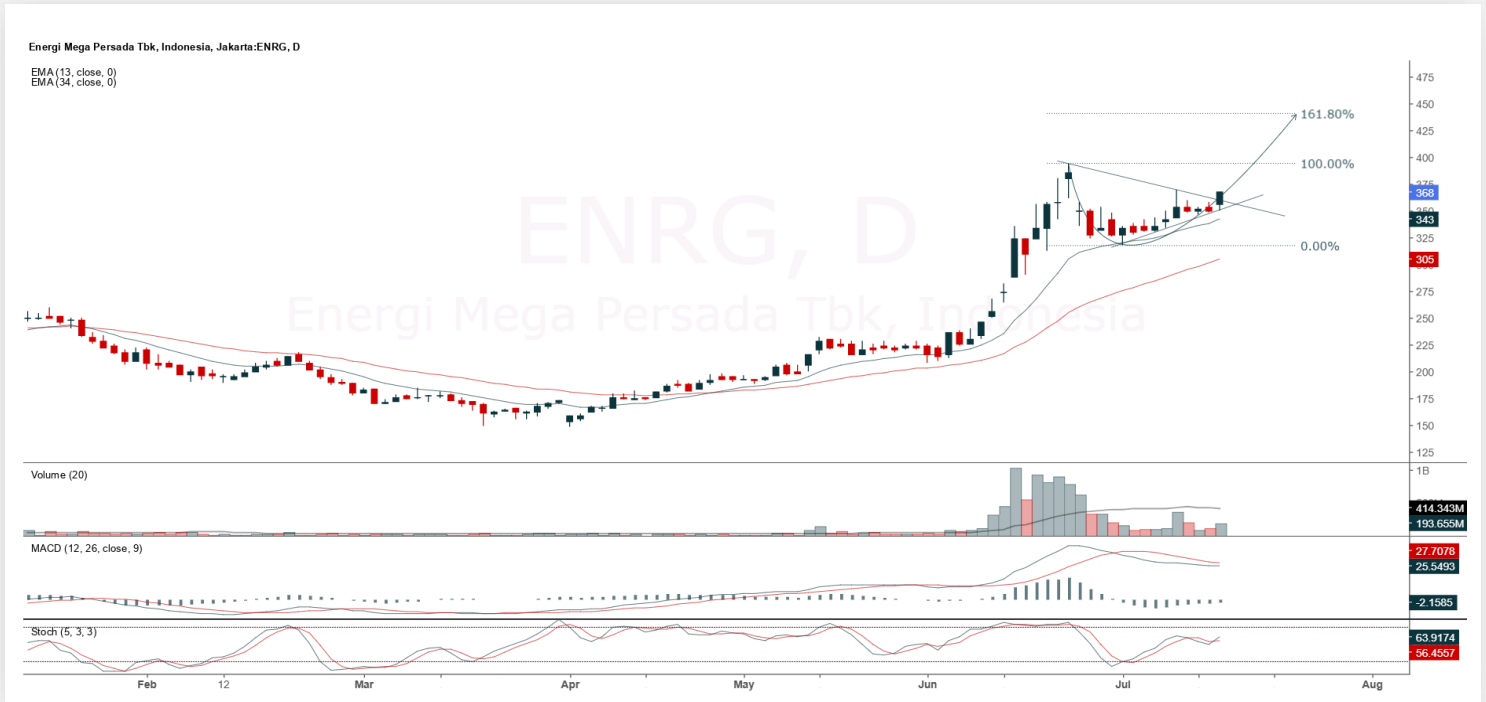




ENRG

Energi Mega Persada Tbk.



(ENRG). Price rallied again and broke out of a bullish pennant pattern. Price is supported by the stochastic indicator turning bullish again and the MACD line showing a potential golden cross (histogram moving in a positive direction) along with an increasing volume trend.

ADVICE: Trading buy or averaging up.

Entry Buy	Target Price	Support	Cut Loss
356 – 368	382 – 396	350 – 356	346



INCO

Vale Indonesia Tbk.



(INCO). Price rallied again with the potential to test the nearest resistance. Price is supported by the stochastic indicator turning bullish and the MACD histogram moving in a positive direction.

ADVICE: Trading buy or accumulation buy.

Entry Buy	Target Price	Support	Cut Loss
3,340 – 3,460	3,600 – 3,750	3,270 – 3,340	3,250



MTEL

Dayamitra Telekomunikasi Tbk.



(MTEL). Price successfully rebounded and moved back above the 560 level. Price is supported by the stochastic indicator turning bullish again and the MACD line turning bullish (histogram moving positive) along with a previously increasing volume trend.

ADVICE: Trading buy or accumulation buy.

Entry Buy	Target Price	Support	Cut Loss
545 – 565	590 – 610	540 – 545	530



TOWR

Sarana Menara Nusantara Tbk.



(TOWR). Price rallied again and is heading to test the nearest resistance. Price is supported by the stochastic indicator turning bullish again and the MACD line turning bullish (histogram moving positive) along with increasing volume.

ADVICE: Trading buy or accumulation buy.

Entry Buy	Target Price	Support	Cut Loss
535 – 555	580 – 600	530 – 535	520

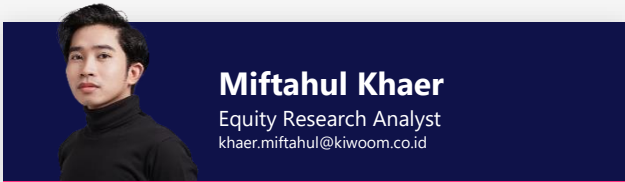


Forecast – Technical Analysis

Ticker	MA5	RSI Rec	MACD Trend	Recomm.	Pivot Point	Support 1	Support 2	Resistance 1	Resistance 2	Stop Loss Level
JCI	Negative	Overbought	Positive	Sell	7,100	7,075	7,050	7,150	7,175	6,950
ACES	Negative	Trading	Positive	Hold	496	486	477	505	515	469
ADMR	Negative	Trading	Positive	Hold	995	975	955	1,015	1,035	940
ADRO	Negative	Trading	Positive	Hold	1,850	1,820	1,785	1,885	1,915	1,755
AKRA	Negative	Trading	Positive	Hold	1,210	1,190	1,175	1,225	1,245	1,155
AMMN	Negative	Trading	Negative	Sell	8,350	8,300	8,175	8,475	8,525	8,050
AMRT	Positive	Trading	Negative	Hold	2,290	2,265	2,230	2,325	2,350	2,195
ANTM	Negative	Trading	Negative	Sell	3,020	2,980	2,920	3,080	3,120	2,875
ARTO	Positive	Trading	Positive	Spec. Buy	1,800	1,755	1,715	1,840	1,885	1,685
ASII	Negative	Trading	Positive	Hold	4,705	4,655	4,605	4,755	4,805	4,535
BBCA	Positive	Oversold	Negative	Spec. Buy	8,575	8,475	8,350	8,700	8,800	8,225
BBNI	Negative	Trading	Positive	Hold	4,105	4,020	3,915	4,210	4,295	3,855
BBRI	Negative	Trading	Positive	Hold	3,825	3,760	3,685	3,900	3,965	3,630
BBTN	Negative	Trading	Positive	Hold	1,190	1,175	1,150	1,215	1,230	1,130
BMRI	Negative	Trading	Negative	Sell	4,835	4,675	4,515	4,995	5,150	4,445
BRIS	Negative	Trading	Positive	Hold	2,750	2,700	2,630	2,820	2,870	2,590
BRPT	Negative	Strong Sell	Positive	Sell	2,010	1,855	1,690	2,175	2,330	1,660
CPIN	Negative	Trading	Positive	Hold	4,845	4,790	4,695	4,940	4,995	4,625
CTRA	Positive	Trading	Negative	Hold	960	935	915	980	1,005	900
ESSA	Negative	Trading	Negative	Sell	590	575	560	605	620	550
EXCL	Negative	Overbought	Positive	Sell	2,305	2,280	2,255	2,330	2,355	2,220
GOTO	Positive	Trading	Positive	Spec. Buy	59	58	57	60	61	56
ICBP	Positive	Trading	Positive	Spec. Buy	10,350	10,250	10,125	10,475	10,575	9,950
INCO	Positive	Trading	Negative	Hold	3,435	3,395	3,335	3,495	3,535	3,285
INDF	Negative	Overbought	Positive	Sell	8,275	8,200	8,050	8,425	8,500	7,925
INKP	Negative	Trading	Positive	Hold	5,775	5,650	5,500	5,925	6,050	5,400
ISAT	Negative	Trading	Negative	Sell	2,080	2,035	1,990	2,125	2,170	1,960
ITMG	Negative	Trading	Positive	Hold	22,525	22,400	22,325	22,600	22,725	21,975
JPFA	Negative	Trading	Positive	Hold	1,590	1,565	1,530	1,625	1,650	1,505
JSMR	Negative	Trading	Positive	Hold	3,660	3,620	3,570	3,710	3,750	3,515
KLBF	Negative	Trading	Positive	Hold	1,565	1,535	1,485	1,615	1,645	1,460
MAPA	Positive	Trading	Negative	Hold	675	660	645	690	705	635
MAPI	Positive	Trading	Positive	Spec. Buy	1,205	1,175	1,140	1,240	1,270	1,120
MBMA	Negative	Overbought	Positive	Sell	510	497	484	525	540	476
MDKA	Negative	Trading	Positive	Hold	2,100	2,070	2,020	2,150	2,180	1,990
MEDC	Negative	Trading	Negative	Sell	1,255	1,245	1,220	1,280	1,290	1,205
PGAS	Positive	Trading	Positive	Spec. Buy	1,590	1,570	1,555	1,605	1,625	1,530
PGEO	Negative	Overbought	Negative	Strong Sell	1,485	1,465	1,440	1,510	1,530	1,420
PTBA	Negative	Trading	Positive	Hold	2,495	2,480	2,465	2,510	2,525	2,430
SIDO	Negative	Trading	Positive	Hold	510	510	500	520	520	494
SMGR	Negative	Trading	Positive	Hold	2,770	2,725	2,670	2,825	2,870	2,625
SMRA	Negative	Trading	Positive	Hold	379	374	369	384	389	363
TLKM	Positive	Trading	Negative	Hold	2,685	2,660	2,615	2,730	2,755	2,575
TOWR	Negative	Trading	Positive	Hold	555	545	535	565	575	525
UNTR	Negative	Overbought	Positive	Sell	22,450	22,325	22,100	22,675	22,800	21,775
UNVR	Positive	Trading	Positive	Spec. Buy	1,575	1,550	1,525	1,600	1,625	1,500



Kiwoom Research Team



HEAD OFFICE

Treasury Tower 27th Floor Unit A, District 8 Kawasan SCBD Lot 28,
Jl.Jend.Sudirman Kav 52-53, Jakarta Selatan 12190

Tel : (021) 5010 5800
Fax : (021) 5010 5820
Email : cs@kiwoom.co.id

PT Kiwoom Sekuritas Indonesia is licensed and supervised by the Financial Services Authority (OJK)

OTHER DISCLOSURES

All Kiwoom's research reports made available to clients are simultaneously available on our own website <http://www.kiwoom.co.id/>. Not all research content is redistributed, e-mailed or made available to third-party aggregators. For all research reports available on a particular stock, please contact your sales representative. Any data discrepancies in this report could be the result of different calculations and/or adjustments.

DISCLAIMER

This report has been prepared and issued by PT Kiwoom Sekuritas Indonesia. Information has been obtained from sources believed to be reliable but Kiwoom Securities do not warrant its completeness or accuracy. Forward-looking information or statements in this report contain information that is based on forecast of future results, estimates of amounts not yet determinable, assumptions, and therefore involve known and unknown risks and uncertainties which may cause the actual results, performance or achievements of their subject matter to be materially different from current expectations. To the fullest extent allowed by law, PT Kiwoom Sekuritas Indonesia shall not be liable for any direct, indirect or consequential losses, loss of profits, damages, costs or expenses incurred or suffered by any person or organization arising from reliance on or use of any information contained on this report. The information that we provide should not be construed in any manner whatsoever as, personalized advice. No mention of a particular security in this report constitutes a recommendation to buy, sell or hold that or any security, or that any particular security, portfolio of securities, transaction or investment strategy is suitable for any specific person. This report is being supplied to you solely for your information and may not be reproduced by, further distributed to or published in whole or in part by, any other person.