



KSI Research

KIWOOM
SEKURITAS INDONESIA

Technical Recommendation

Jakarta Composite Index Range Today

7,080 – 7,055 (close the GAP) / 7,000
Support

7,161 / 7,200 – 7,240
Resistance

Published on 16 July 2025



Jakarta Composite Index

JCI closing was precisely held back by the Resistance (mid-term) at the 7,140.5 level, after recording a gain of 43.32pts / +0.61% although the intraday High briefly touched 7,161.8. The current movement of JCI raises the question of whether bullish momentum is still strong enough to push JCI through the critical Resistance at 7,150, in order to clear the path to the short-term Target of 7,200 – 7,240. Coinciding with the announcement of the 19% US trade tariff decision, **KIWOOM RESEARCH** advises investors/traders to consider how the market reacts to it, and therefore preparing a Trailing Stop is the wisest strategy to apply today.

ADVICE: HOLD; set your TRAILING STOP.



BBRI

Bank Rakyat Indonesia (Persero) Tbk.



(BBRI). Price rebounded again and has the potential to form an inverted head & shoulder pattern. Price is supported by the stochastic indicator which remains bullish, and the MACD line has already made a golden cross (histogram moves positive), along with increasing volume.

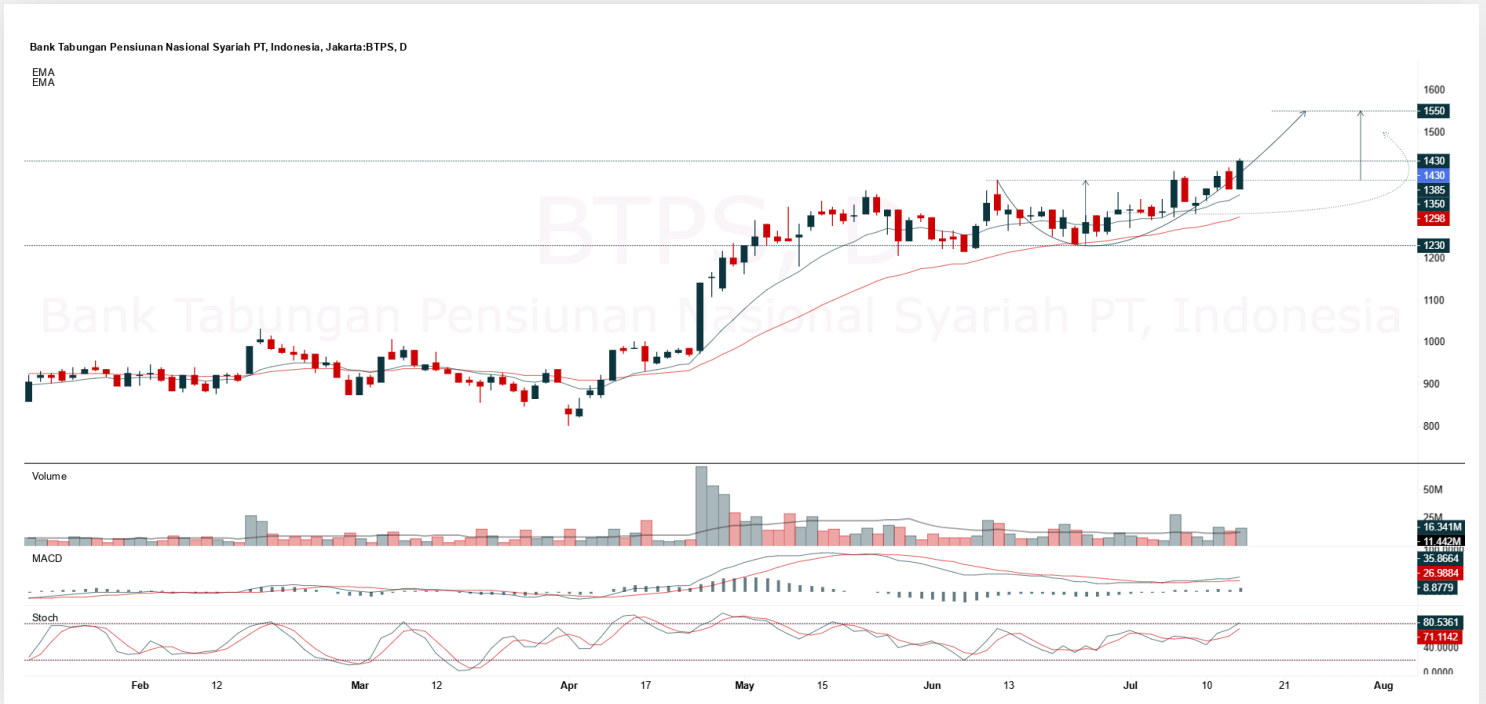
ADVICE: Accumulation buy or trading buy.

Entry Buy	Target Price	Support	Cut Loss
3,750 – 3,880	4,030 – 4,180	3,660 – 3,750	3,640



BTPS

Bank BTPN Syariah Tbk.



(BTPS). Price strengthened and is currently testing the nearest resistance. Price is supported by a bullish stochastic indicator, MACD line has the potential to move bullish (histogram moves positive), and increasing volume.

ADVICE: Trading buy or buy on break 1,430.

Entry Buy	Target Price	Support	Cut Loss
1,380 – 1,430	1,490 – 1,550	1,355 – 1,380	1,345



SCMA

Surya Citra Media Tbk.



(SCMA). Price successfully rebounded and a swing low has formed again. Price is supported by the stochastic indicator with a potential golden cross, MACD line moves bullish (histogram moves positive), and an increasing volume trend.

ADVICE: Trading buy or accumulation buy.

Entry Buy	Target Price	Support	Cut Loss
156 – 162	169 – 176	154 – 156	152



SRTG

Saratoga Investama Sedaya Tbk.



(SRTG). Price strengthened significantly and broke the nearest resistance. Price is supported by the stochastic indicator which will golden cross, MACD line is bullish (histogram moves positive again), and an increasing volume trend.

ADVICE: Trading buy or buy on break 1,710 – 1,725.

Entry Buy	Target Price	Support	Cut Loss
1,630 – 1,690	1,760 – 1,830	1,595 – 1,630	1,585

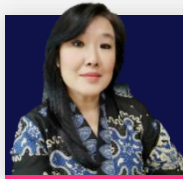


Forecast – Technical Analysis

Ticker	MA5	RSI Rec	MACD Trend	Recomm.	Pivot Point	Support 1	Support 2	Resistance 1	Resistance 2	Stop Loss Level
JCI	Negative	Overbought	Positive	Sell	7,125	7,100	7,050	7,175	7,200	6,925
ACES	Negative	Trading	Positive	Hold	490	484	480	494	500	473
ADMR	Negative	Trading	Positive	Hold	985	975	960	1,000	1,010	945
ADRO	Negative	Trading	Positive	Hold	1,820	1,805	1,790	1,835	1,850	1,760
AKRA	Negative	Trading	Positive	Hold	1,235	1,210	1,195	1,250	1,275	1,175
AMMN	Negative	Trading	Negative	Sell	8,300	8,175	8,050	8,425	8,550	7,925
AMRT	Positive	Oversold	Negative	Spec. Buy	2,260	2,215	2,180	2,295	2,340	2,145
ANTM	Negative	Trading	Negative	Sell	3,005	2,980	2,935	3,050	3,075	2,890
ARTO	Negative	Trading	Positive	Hold	1,775	1,755	1,725	1,805	1,825	1,700
ASII	Negative	Trading	Positive	Hold	4,685	4,665	4,615	4,735	4,755	4,545
BBCA	Negative	Trading	Negative	Sell	8,550	8,525	8,425	8,650	8,675	8,300
BBNI	Negative	Trading	Positive	Hold	4,045	4,015	3,985	4,075	4,105	3,925
BBRI	Negative	Trading	Positive	Hold	3,835	3,790	3,735	3,890	3,935	3,680
BBTN	Negative	Overbought	Positive	Sell	1,195	1,180	1,150	1,225	1,240	1,130
BMRI	Negative	Trading	Negative	Sell	4,710	4,675	4,660	4,725	4,760	4,590
BRIS	Negative	Trading	Positive	Hold	2,750	2,725	2,710	2,765	2,790	2,665
BRPT	Negative	Overbought	Positive	Sell	2,060	1,970	1,865	2,165	2,255	1,835
CPIN	Negative	Trading	Positive	Hold	4,840	4,800	4,780	4,860	4,900	4,710
CTRA	Negative	Trading	Negative	Sell	955	920	880	995	1,030	865
ESSA	Negative	Trading	Negative	Sell	585	580	570	595	600	560
EXCL	Negative	Overbought	Positive	Sell	2,410	2,315	2,230	2,495	2,590	2,195
GOTO	Positive	Trading	Positive	Spec. Buy	59	58	57	60	61	56
ICBP	Positive	Trading	Positive	Spec. Buy	10,350	10,275	10,075	10,550	10,625	9,925
INCO	Negative	Trading	Negative	Sell	3,465	3,410	3,345	3,530	3,585	3,295
INDF	Negative	Trading	Positive	Hold	8,325	8,275	8,200	8,400	8,450	8,075
INKP	Negative	Trading	Positive	Hold	5,725	5,675	5,600	5,800	5,850	5,500
ISAT	Positive	Trading	Negative	Hold	2,050	2,030	2,010	2,070	2,090	1,980
ITMG	Negative	Trading	Positive	Hold	22,425	22,350	22,250	22,525	22,600	21,925
JPFA	Negative	Trading	Positive	Hold	1,590	1,575	1,555	1,610	1,625	1,530
JSMR	Negative	Trading	Positive	Hold	3,620	3,600	3,580	3,640	3,660	3,525
KLBF	Negative	Trading	Negative	Sell	1,540	1,520	1,490	1,570	1,590	1,470
MAPA	Positive	Trading	Negative	Hold	675	665	645	695	705	635
MAPI	Positive	Trading	Positive	Spec. Buy	1,205	1,180	1,150	1,235	1,260	1,130
MBMA	Negative	Overbought	Positive	Sell	535	497	461	570	605	454
MDKA	Negative	Trading	Positive	Hold	2,115	2,080	2,025	2,170	2,205	1,995
MEDC	Negative	Trading	Negative	Sell	1,250	1,240	1,225	1,265	1,275	1,205
PGAS	Negative	Trading	Positive	Hold	1,580	1,555	1,540	1,595	1,620	1,515
PGEO	Negative	Overbought	Positive	Sell	1,575	1,500	1,430	1,645	1,720	1,405
PTBA	Negative	Oversold	Positive	Spec. Buy	2,480	2,455	2,430	2,505	2,530	2,390
SIDO	Negative	Trading	Positive	Hold	515	510	505	520	525	495
SMGR	Negative	Trading	Positive	Hold	2,735	2,685	2,645	2,775	2,825	2,605
SMRA	Negative	Trading	Positive	Hold	385	372	357	400	413	352
TLKM	Negative	Trading	Negative	Sell	2,665	2,640	2,615	2,690	2,715	2,575
TOWR	Negative	Overbought	Positive	Sell	575	550	530	595	620	520
UNTR	Negative	Overbought	Positive	Sell	22,575	22,525	22,425	22,675	22,725	22,075
UNVR	Negative	Trading	Positive	Hold	1,570	1,555	1,535	1,590	1,605	1,510



Kiwoom Research Team



Liza Camelia Suryanata

Head of Equity Research
liza.camelia@kiwoom.co.id



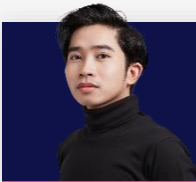
Sukarno Alatas

Senior Equity Research Analyst
sukarno@kiwoom.co.id



Abdul Azis Setyo W.

Equity Research Analyst
azis@kiwoom.co.id



Miftahul Khaer

Equity Research Analyst
khaer.miftahul@kiwoom.co.id



Wahyu Saputra

Equity Research Associate
wahyu.saputra@kiwoom.co.id



HEAD OFFICE

Treasury Tower 27th Floor Unit A, District 8 Kawasan SCBD Lot 28,
Jl.Jend.Sudirman Kav 52-53, Jakarta Selatan 12190

Tel : (021) 5010 5800
Fax : (021) 5010 5820
Email : cs@kiwoom.co.id

PT Kiwoom Sekuritas Indonesia is licensed and supervised by the Financial Services Authority (OJK)

OTHER DISCLOSURES

All Kiwoom's research reports made available to clients are simultaneously available on our own website <http://www.kiwoom.co.id/>. Not all research content is redistributed, e-mailed or made available to third-party aggregators. For all research reports available on a particular stock, please contact your sales representative. Any data discrepancies in this report could be the result of different calculations and/or adjustments.

DISCLAIMER

This report has been prepared and issued by PT Kiwoom Sekuritas Indonesia. Information has been obtained from sources believed to be reliable but Kiwoom Securities do not warrant its completeness or accuracy. Forward-looking information or statements in this report contain information that is based on forecast of future results, estimates of amounts not yet determinable, assumptions, and therefore involve known and unknown risks and uncertainties which may cause the actual results, performance or achievements of their subject matter to be materially different from current expectations. To the fullest extent allowed by law, PT Kiwoom Sekuritas Indonesia shall not be liable for any direct, indirect or consequential losses, loss of profits, damages, costs or expenses incurred or suffered by any person or organization arising from reliance on or use of any information contained on this report. The information that we provide should not be construed in any manner whatsoever as, personalized advice. No mention of a particular security in this report constitutes a recommendation to buy, sell or hold that or any security, or that any particular security, portfolio of securities, transaction or investment strategy is suitable for any specific person. This report is being supplied to you solely for your information and may not be reproduced by, further distributed to or published in whole or in part by, any other person.