



KSI Research

KIWOOM
SEKURITAS INDONESIA

Technical Recommendation

Jakarta Composite Index Range Today

7,291 / 7,240 – 7,215

Support

7,325 – 7,400

Resistance

Published on 21 July 2025



Jakarta Composite Index

JCI closed impressively at the level of 7,311.92, after continuing its gain by 24.89pts / +0.34% (with the intraday high even reaching 7,401). Last Friday's surge was supported by a Foreign Net Buy of IDR 217.87 billion, while Rupiah exchange rate remained relatively stable at 16,265 / USD. JCI, which has reached KIWOOM RESEARCH's YEAR-END TARGET in the range of 7,275 – 7,325, formed a candle similar to a Shooting Star, which indicates a potential bearish reversal ahead (due to its location in the Resistance area / already reaching the Target). The suspicion is further supported by the RSI indicator showing negative divergence, hence **KIWOOM RESEARCH advises investors/traders to set your TRAILING STOP** because if a pullback occurs, JCI will likely attempt to fill the GAP first at the 7,291 level as the first Support. The next support lies at 7,240 – 7,215 (also to fill the GAP).

ADVICE: Set your Trailing Stop.



ELSA

Elnusa Tbk.



(ELSA). Price successfully broke the nearest resistance. Price is supported by the stochastic indicator turning back to a golden cross and the MACD line turning bullish (histogram moving positive), with significantly increasing volume.

ADVICE: Accumulation buy or trading buy.

Entry Buy	Target Price	Support	Cut Loss
484 – 500	520 – 540	476 – 484	472



ISAT

Indosat Tbk.



(ISAT). Price continued rallying and broke resistance in the sideways area. Price is supported by a bullish-moving stochastic indicator, the MACD line turning bullish (histogram moving positive), and increasing volume trend.

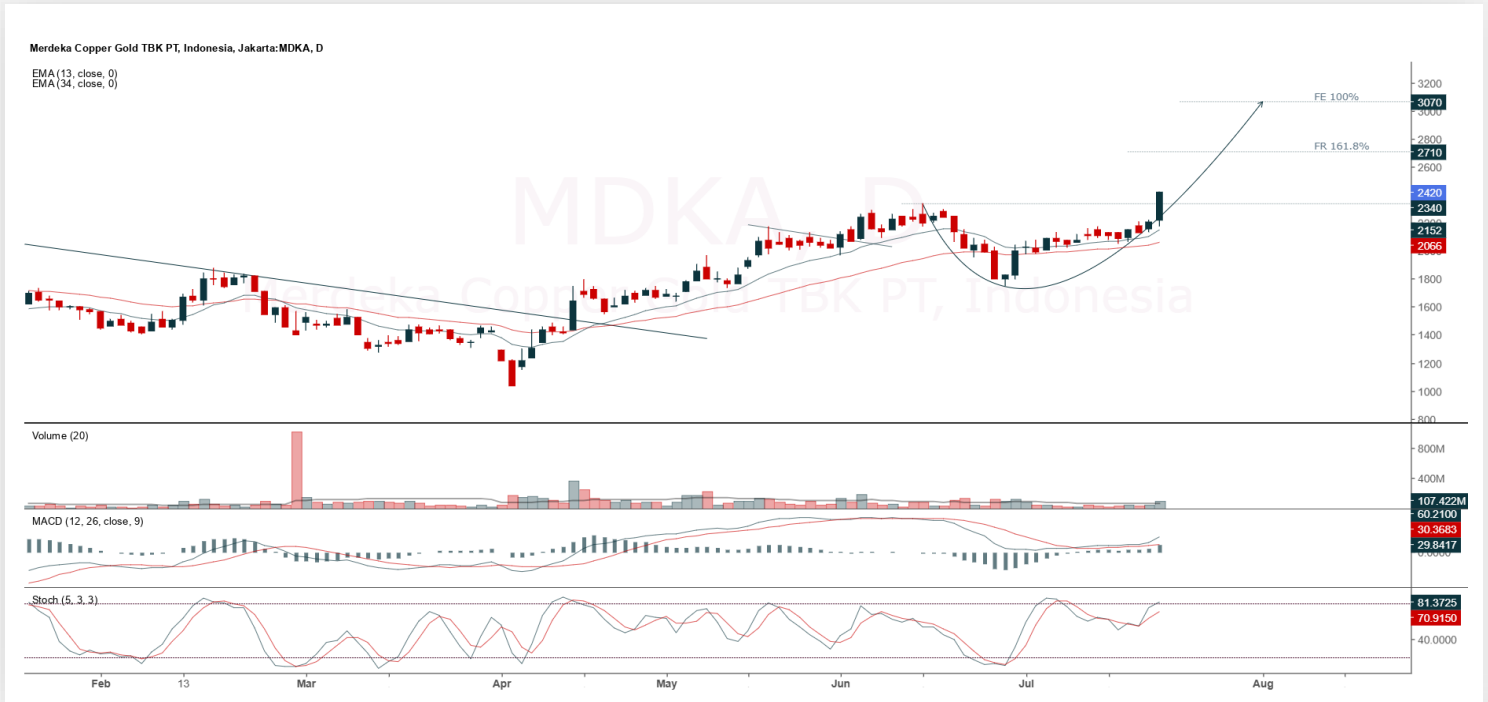
ADVICE: Trading buy or averaging up.

Entry Buy	Target Price	Support	Cut Loss
2,270 – 2,350	2,450 – 2,550	2,230 – 2,270	2,210



MDKA

Merdeka Copper Gold Tbk.



(MDKA). Price successfully broke resistance and has the potential to continue its uptrend. Price is supported by a bullish-moving stochastic indicator, a bullish MACD line (positive histogram), and an increasing volume trend.

ADVICE: Trading buy or averaging up.

Entry Buy	Target Price	Support	Cut Loss
2,340 – 2,420	2,520 – 2,620	2,300 – 2,340	2,280



SRTG

Saratoga Investama Sedaya Tbk.



(SRTG). Price continued rallying and has the potential to test resistance. Price is supported by a bullish-moving stochastic indicator, a bullish MACD line (positive histogram), and an increasing volume trend.

ADVICE: Trading buy or buy on break of the 1,870 level.

Entry Buy	Target Price	Support	Cut Loss
1,780 – 1,840	1,915 – 1,990	1,750 – 1,780	1,740



Forecast – Technical Analysis

Ticker	MA5	RSI Rec	MACD Trend	Recomm.	Pivot Point	Support 1	Support 2	Resistance 1	Resistance 2	Stop Loss Level
JCI	Negative	Overbought	Positive	Sell	7,350	7,275	7,250	7,375	7,425	7,150
ACES	Positive	Trading	Positive	Spec. Buy	492	488	486	494	498	479
ADMR	Positive	Trading	Positive	Spec. Buy	990	970	960	1,000	1,020	945
ADRO	Positive	Trading	Positive	Spec. Buy	1,840	1,820	1,810	1,850	1,870	1,780
AKRA	Negative	Trading	Positive	Hold	1,200	1,190	1,170	1,220	1,230	1,155
AMMN	Positive	Trading	Negative	Hold	8,050	7,975	7,875	8,150	8,225	7,750
AMRT	Positive	Trading	Negative	Hold	2,255	2,230	2,205	2,280	2,305	2,170
ANTM	Negative	Trading	Negative	Sell	2,990	2,950	2,900	3,040	3,080	2,855
ARTO	Positive	Trading	Positive	Spec. Buy	1,750	1,715	1,695	1,770	1,805	1,665
ASII	Negative	Trading	Positive	Hold	4,790	4,735	4,700	4,825	4,880	4,625
BBCA	Positive	Oversold	Negative	Spec. Buy	8,500	8,425	8,350	8,575	8,650	8,225
BBNI	Positive	Trading	Positive	Spec. Buy	4,125	4,095	4,075	4,145	4,175	4,010
BBRI	Positive	Trading	Positive	Spec. Buy	3,895	3,845	3,815	3,925	3,975	3,755
BBTN	Negative	Trading	Positive	Hold	1,220	1,205	1,185	1,240	1,255	1,170
BMRI	Positive	Trading	Positive	Spec. Buy	4,760	4,705	4,670	4,795	4,850	4,595
BRIS	Positive	Overbought	Positive	Hold	2,795	2,770	2,735	2,830	2,855	2,695
BRPT	Negative	Strong Sell	Positive	Sell	2,265	2,185	2,145	2,305	2,385	2,110
CPIN	Positive	Trading	Positive	Spec. Buy	5,025	4,925	4,865	5,075	5,175	4,790
CTRA	Positive	Trading	Positive	Spec. Buy	980	970	960	990	1,000	945
ESSA	Positive	Trading	Positive	Spec. Buy	585	580	575	590	595	565
EXCL	Negative	Overbought	Positive	Sell	2,660	2,620	2,570	2,710	2,750	2,530
GOTO	Positive	Oversold	Positive	Buy	59	57	54	62	64	53
ICBP	Negative	Trading	Positive	Hold	10,400	10,275	10,175	10,500	10,625	10,025
INCO	Negative	Trading	Negative	Sell	3,390	3,315	3,250	3,455	3,530	3,200
INDF	Negative	Trading	Positive	Hold	8,225	8,200	8,150	8,275	8,300	8,025
INKP	Positive	Trading	Positive	Spec. Buy	5,750	5,700	5,675	5,775	5,825	5,575
ISAT	Negative	Overbought	Positive	Sell	2,315	2,245	2,185	2,375	2,445	2,150
ITMG	Positive	Trading	Positive	Spec. Buy	22,475	22,425	22,325	22,575	22,625	22,000
JPFA	Negative	Overbought	Positive	Sell	1,695	1,660	1,635	1,720	1,755	1,610
JSMR	Positive	Trading	Positive	Spec. Buy	3,680	3,645	3,630	3,695	3,730	3,575
KLBF	Positive	Trading	Negative	Hold	1,520	1,485	1,460	1,545	1,580	1,440
MAPA	Negative	Trading	Negative	Sell	670	650	630	690	710	620
MAPI	Positive	Oversold	Negative	Spec. Buy	1,160	1,125	1,095	1,190	1,225	1,075
MBMA	Negative	Overbought	Positive	Sell	555	535	520	570	590	510
MDKA	Negative	Overbought	Positive	Sell	2,310	2,195	2,060	2,445	2,560	2,025
MEDC	Negative	Trading	Positive	Hold	1,310	1,285	1,280	1,315	1,340	1,260
PGAS	Positive	Trading	Positive	Spec. Buy	1,610	1,580	1,550	1,640	1,670	1,525
PGEO	Negative	Overbought	Positive	Sell	1,670	1,605	1,565	1,710	1,775	1,540
PTBA	Positive	Oversold	Positive	Buy	2,450	2,440	2,430	2,460	2,470	2,395
SIDO	Positive	Trading	Positive	Spec. Buy	510	500	498	510	520	490
SMGR	Positive	Trading	Negative	Hold	2,655	2,585	2,525	2,715	2,785	2,485
SMRA	Negative	Trading	Positive	Hold	391	387	383	395	399	377
TLKM	Positive	Trading	Positive	Spec. Buy	2,780	2,760	2,730	2,810	2,830	2,690
TOWR	Negative	Trading	Positive	Hold	585	575	565	595	605	555
UNTR	Negative	Overbought	Positive	Sell	22,600	22,400	22,300	22,700	22,900	21,950
UNVR	Positive	Trading	Positive	Spec. Buy	1,550	1,505	1,465	1,590	1,635	1,440



Kiwoom Research Team



HEAD OFFICE

Treasury Tower 27th Floor Unit A, District 8 Kawasan SCBD Lot 28,
Jl.Jend.Sudirman Kav 52-53, Jakarta Selatan 12190

Tel : (021) 5010 5800
Fax : (021) 5010 5820
Email : cs@kiwoom.co.id

PT Kiwoom Sekuritas Indonesia is licensed and supervised by the Financial Services Authority (OJK)

OTHER DISCLOSURES

All Kiwoom's research reports made available to clients are simultaneously available on our own website <http://www.kiwoom.co.id/>. Not all research content is redistributed, e-mailed or made available to third-party aggregators. For all research reports available on a particular stock, please contact your sales representative. Any data discrepancies in this report could be the result of different calculations and/or adjustments.

DISCLAIMER

This report has been prepared and issued by PT Kiwoom Sekuritas Indonesia. Information has been obtained from sources believed to be reliable but Kiwoom Securities do not warrant its completeness or accuracy. Forward-looking information or statements in this report contain information that is based on forecast of future results, estimates of amounts not yet determinable, assumptions, and therefore involve known and unknown risks and uncertainties which may cause the actual results, performance or achievements of their subject matter to be materially different from current expectations. To the fullest extent allowed by law, PT Kiwoom Sekuritas Indonesia shall not be liable for any direct, indirect or consequential losses, loss of profits, damages, costs or expenses incurred or suffered by any person or organization arising from reliance on or use of any information contained on this report. The information that we provide should not be construed in any manner whatsoever as, personalized advice. No mention of a particular security in this report constitutes a recommendation to buy, sell or hold that or any security, or that any particular security, portfolio of securities, transaction or investment strategy is suitable for any specific person. This report is being supplied to you solely for your information and may not be reproduced by, further distributed to or published in whole or in part by, any other person.