



KSI Research

**KIWOOM**  
SEKURITAS INDONESIA

# Technical Recommendation

Jakarta Composite Index Range Today

**7,305 – 7,290 (Close GAP #1) / 7,215 (Close GAP #2) / 7,135**      **7,408 / 7,530**  
Support      Resistance

Published on 22 July 2025



## Jakarta Composite Index

JCI closed up 86.28 pts / +0.68% to 7,398.19, once again recording a new 7-month high (intraday High: 7,408). The formed candle resembles a Hanging Man (following a Shooting Star the previous day), still signaling potential pullback lurking ahead, especially as this gain was accompanied by foreign net sell amounting to IDR 180.3 billion; although RUPIAH exchange rate remained relatively stable at 16,291 / USD.

**KIWOOM RESEARCH** once again reminds investors/traders not to forget to apply Trailing Stop levels to secure floating profit.

Example of Trailing Stop that can be used: gradually sell when JCI closes below the previous day's Low (as long as that hasn't happened, let your profit run).

***ADVICE:*** Set your Trailing Stop.



## ANTM

Aneka Tambang Tbk.



**(ANTM).** Price successfully broke out of the nearest resistance. Price is supported by the stochastic indicator returning to a golden cross and the MACD line forming a golden cross (histogram turning positive again), along with increasing volume.

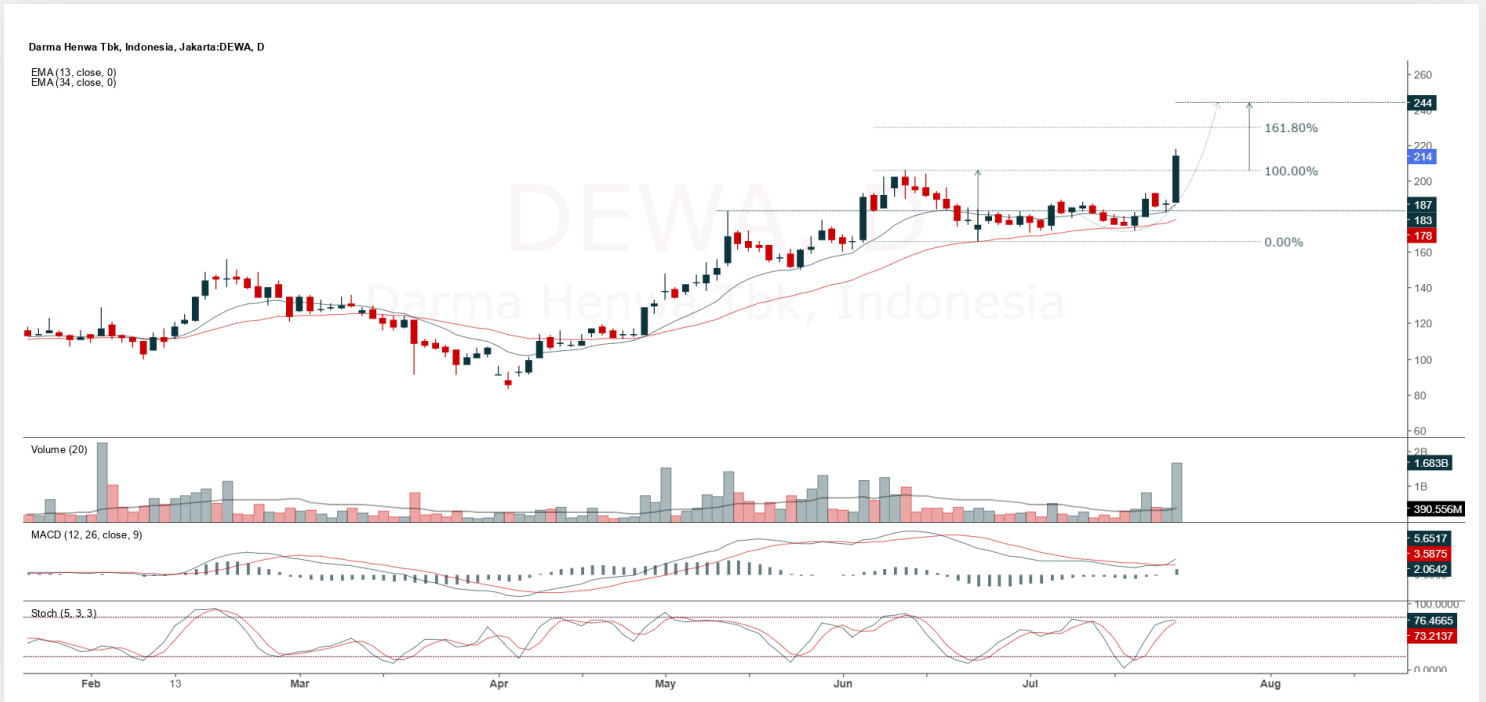
**ADVICE:** Accumulation buy or trading buy.

Entry Buy	Target Price	Support	Cut Loss
3,070 – 3,190	3,330 – 3,470	3,010 – 3,070	2,990



## DEWA

Darma Henwa Tbk.



**(DEWA).** Price continued to rally and broke out of resistance. Price is supported by the stochastic indicator moving bullishly, MACD line forming a golden cross (histogram turning positive again), and significantly increasing volume.

**ADVICE:** Trading buy or averaging up.

Entry Buy	Target Price	Support	Cut Loss
206 – 214	224 – 232	202 – 206	199



## INCO

Vale Indonesia Tbk.



**(INCO).** Price successfully broke resistance and has the potential to continue the uptrend. Price is supported by the stochastic indicator potentially forming a golden cross, MACD line returning to a golden cross (histogram turning positive again), and an increasing volume trend.

**ADVICE:** Trading buy or accumulation buy.

Entry Buy	Target Price	Support	Cut Loss
3,520 – 3,650	3,800 – 3,950	3,450 – 3,520	3,430



## TLKM

Telkom Indonesia (Persero) Tbk.



**(TLKM).** Price continued positively after breaking out of resistance. Price is supported by the stochastic indicator moving bullishly and the MACD line currently moving bullishly (positive histogram).

**ADVICE:** Trading buy or accumulation buy.

Entry Buy	Target Price	Support	Cut Loss
2,700 – 2,800	2,920 – 3,040	2,650 – 2,700	2,630

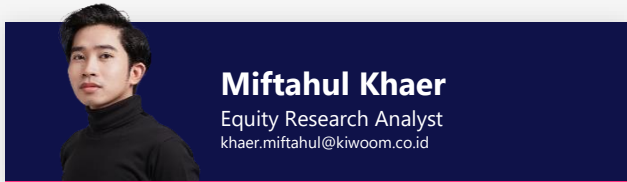


## Forecast – Technical Analysis

Ticker	MA5	RSI Rec	MACD Trend	Recomm.	Pivot Point	Support 1	Support 2	Resistance 1	Resistance 2	Stop Loss Level
JCI	Negative	Overbought	Positive	Sell	7,375	7,325	7,275	7,425	7,475	7,150
ACES	Negative	Oversold	Positive	Spec. Buy	487	480	475	492	499	468
ADMR	Negative	Trading	Positive	Hold	990	970	955	1,005	1,025	940
ADRO	Negative	Trading	Positive	Hold	1,875	1,850	1,825	1,900	1,925	1,795
AKRA	Negative	Trading	Positive	Hold	1,210	1,205	1,195	1,220	1,225	1,175
AMMN	Positive	Trading	Negative	Hold	8,025	7,950	7,825	8,150	8,225	7,725
AMRT	Positive	Trading	Negative	Hold	2,240	2,215	2,190	2,265	2,290	2,155
ANTM	Negative	Trading	Negative	Sell	3,085	2,960	2,825	3,220	3,345	2,785
ARTO	Negative	Trading	Positive	Hold	1,740	1,710	1,655	1,795	1,825	1,630
ASII	Negative	Trading	Positive	Hold	4,775	4,740	4,685	4,830	4,865	4,615
BBCA	Positive	Oversold	Negative	Spec. Buy	8,450	8,400	8,325	8,525	8,575	8,200
BBNI	Negative	Trading	Positive	Hold	4,105	4,070	4,035	4,140	4,175	3,975
BBRI	Negative	Trading	Positive	Hold	3,865	3,825	3,795	3,895	3,935	3,735
BBTN	Negative	Trading	Positive	Hold	1,195	1,175	1,155	1,215	1,235	1,135
BMRI	Negative	Trading	Positive	Hold	4,725	4,680	4,635	4,770	4,815	4,565
BRIS	Negative	Overbought	Positive	Sell	2,790	2,755	2,720	2,825	2,860	2,675
BRPT	Negative	Strong Sell	Positive	Sell	2,335	2,215	2,095	2,455	2,575	2,060
CPIN	Negative	Trading	Positive	Hold	4,955	4,920	4,875	5,000	5,025	4,800
CTRA	Negative	Trading	Negative	Sell	965	935	905	995	1,025	890
ESSA	Negative	Trading	Negative	Sell	580	575	560	595	600	555
EXCL	Negative	Overbought	Positive	Sell	2,620	2,580	2,540	2,660	2,700	2,500
GOTO	Positive	Oversold	Positive	Buy	58	56	55	59	61	54
ICBP	Negative	Trading	Positive	Hold	10,425	10,350	10,175	10,600	10,675	10,025
INCO	Negative	Overbought	Positive	Sell	3,510	3,330	3,170	3,670	3,850	3,120
INDF	Positive	Trading	Positive	Spec. Buy	8,300	8,225	8,150	8,375	8,450	8,025
INKP	Negative	Trading	Positive	Hold	5,800	5,725	5,675	5,850	5,925	5,575
ISAT	Negative	Overbought	Positive	Sell	2,410	2,350	2,300	2,460	2,520	2,265
ITMG	Negative	Trading	Positive	Hold	22,625	22,350	22,250	22,725	23,000	21,925
JPFA	Negative	Overbought	Positive	Sell	1,705	1,670	1,625	1,750	1,785	1,600
JSMR	Positive	Trading	Positive	Spec. Buy	3,620	3,565	3,510	3,675	3,730	3,455
KLBF	Positive	Trading	Negative	Hold	1,505	1,490	1,460	1,535	1,550	1,440
MAPA	Negative	Trading	Negative	Sell	655	640	625	670	685	615
MAPI	Positive	Oversold	Negative	Spec. Buy	1,145	1,130	1,110	1,165	1,180	1,090
MBMA	Negative	Overbought	Positive	Sell	570	545	520	595	620	515
MDKA	Negative	Overbought	Positive	Sell	2,465	2,375	2,315	2,525	2,615	2,280
MEDC	Negative	Trading	Positive	Hold	1,295	1,280	1,260	1,315	1,330	1,240
PGAS	Negative	Trading	Positive	Hold	1,640	1,620	1,605	1,655	1,675	1,580
PGEO	Negative	Overbought	Positive	Sell	1,670	1,620	1,580	1,710	1,760	1,555
PTBA	Positive	Oversold	Positive	Buy	2,440	2,415	2,390	2,465	2,490	2,350
SIDO	Positive	Trading	Positive	Spec. Buy	510	505	499	515	520	491
SMGR	Positive	Oversold	Negative	Spec. Buy	2,540	2,480	2,410	2,610	2,670	2,375
SMRA	Negative	Trading	Positive	Hold	390	386	382	394	398	376
TLKM	Negative	Trading	Positive	Hold	2,790	2,775	2,740	2,825	2,840	2,695
TOWR	Negative	Overbought	Positive	Sell	620	580	535	665	705	530
UNTR	Negative	Overbought	Positive	Sell	22,775	22,575	22,300	23,050	23,250	21,950
UNVR	Positive	Trading	Positive	Spec. Buy	1,545	1,495	1,470	1,570	1,620	1,445



## Kiwoom Research Team



### HEAD OFFICE

Treasury Tower 27th Floor Unit A, District 8 Kawasan SCBD Lot 28,  
Jl.Jend.Sudirman Kav 52-53, Jakarta Selatan 12190

Tel : (021) 5010 5800  
Fax : (021) 5010 5820  
Email : [cs@kiwoom.co.id](mailto:cs@kiwoom.co.id)

PT Kiwoom Sekuritas Indonesia is licensed and supervised by the Financial Services Authority (OJK)

### OTHER DISCLOSURES

All Kiwoom's research reports made available to clients are simultaneously available on our own website <http://www.kiwoom.co.id/>. Not all research content is redistributed, e-mailed or made available to third-party aggregators. For all research reports available on a particular stock, please contact your sales representative. Any data discrepancies in this report could be the result of different calculations and/or adjustments.

### DISCLAIMER

This report has been prepared and issued by PT Kiwoom Sekuritas Indonesia. Information has been obtained from sources believed to be reliable but Kiwoom Securities do not warrant its completeness or accuracy. Forward-looking information or statements in this report contain information that is based on forecast of future results, estimates of amounts not yet determinable, assumptions, and therefore involve known and unknown risks and uncertainties which may cause the actual results, performance or achievements of their subject matter to be materially different from current expectations. To the fullest extent allowed by law, PT Kiwoom Sekuritas Indonesia shall not be liable for any direct, indirect or consequential losses, loss of profits, damages, costs or expenses incurred or suffered by any person or organization arising from reliance on or use of any information contained on this report. The information that we provide should not be construed in any manner whatsoever as, personalized advice. No mention of a particular security in this report constitutes a recommendation to buy, sell or hold that or any security, or that any particular security, portfolio of securities, transaction or investment strategy is suitable for any specific person. This report is being supplied to you solely for your information and may not be reproduced by, further distributed to or published in whole or in part by, any other person.