



# Technical Recommendation

Jakarta Composite Index Range Today

**7,860 – 7,850 / 7,800 / 7,700**

Support

**8,000 – 8,017 / 8,200**

Resistance

Published on 26 August 2025



## **Jakarta Composite Index**

JCI recorded an increase of 68.06pts / +0.87% to the level of 7,926.91 supported by Foreign Net Buy of IDR 731.6 billion. Rupiah exchange rate stabilizing at 16,236 / USD.

**KIWOOM RESEARCH** reminds investors / traders once again that JCI needs to break through the crucial level of 8,000 – 8,017 in order to make a bullish swing breakthrough towards the next TARGET: 8,200 / 8,400. Strictly monitor Support MA10 / 7,860 to make sure this Uptrend is strong.

**ADVICE:** WAIT & SEE; AVERAGE UP on break out.



## CLEO

Sariguna Primatirta Tbk.



**(CLEO).** Price breakout from the nearest resistance and continues to move uptrend. Price is supported by stochastic indicator forming another golden cross and MACD line moving bullish (histogram still moving positive) as well as increasing volume.

**ADVICE:** Accumulate buy or trading buy.

Entry Buy	Target Price	Support	Cut Loss
595 – 615	640 – 660	585 – 595	575



## CTRA

Ciputra Development Tbk.



**(CTRA).** Price formed another swing low and breaks the 1,050 level again. Price is supported by stochastic indicator with potential golden cross and MACD line moving bullish (histogram still moving positive) as well as increasing volume.

**ADVICE:** Accumulate buy or trading buy.

Entry Buy	Target Price	Support	Cut Loss
1,035 – 1,065	1,105 – 1,140	1,020 – 1,035	1,010



## JSMR

Jasa Marga (Persero) Tbk.



**(JSMR).** Price successfully rebounded after touching the long-term trendline support. Price is supported by stochastic indicator forming another golden cross and MACD histogram starting to move towards positive as well as increasing volume trend.

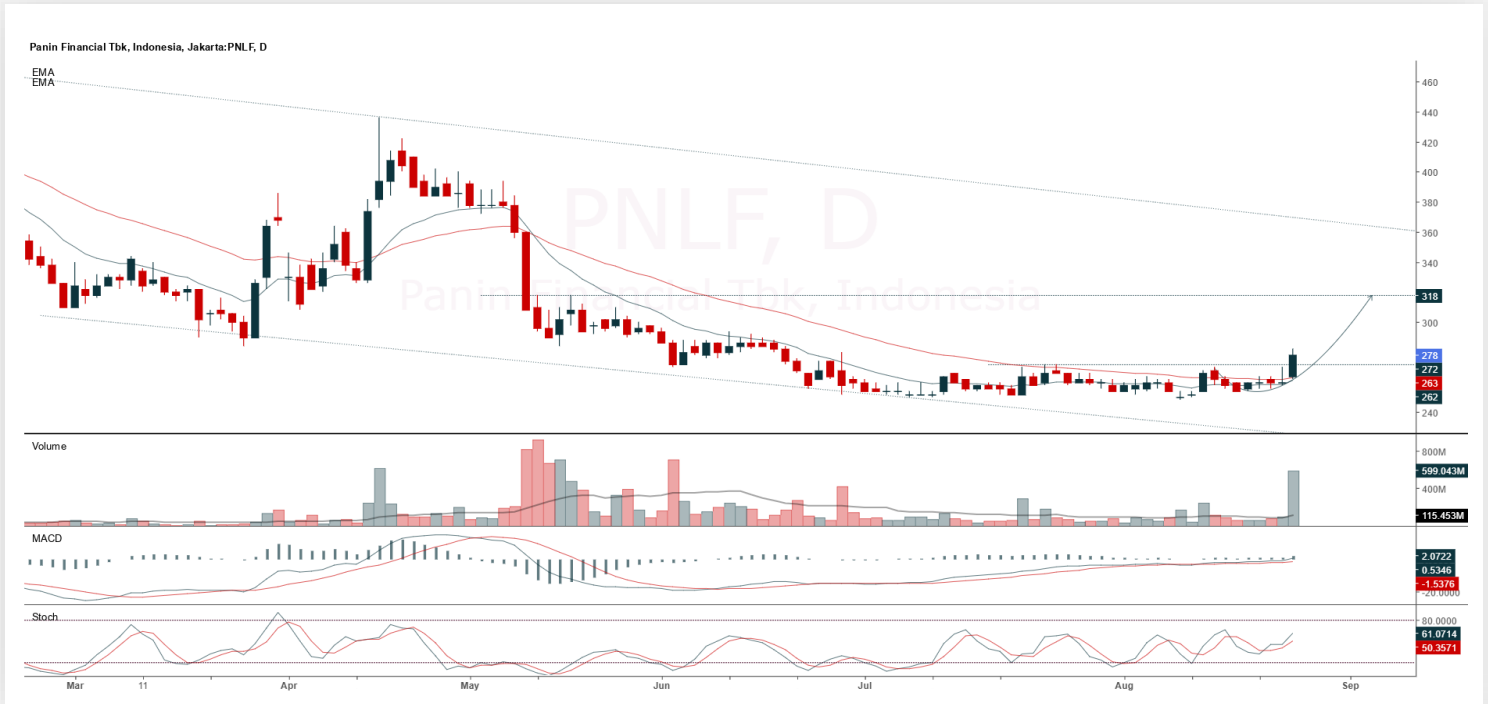
**ADVICE:** Accumulate buy or buy on weakness.

Entry Buy	Target Price	Support	Cut Loss
3,310 – 3,430	3,570 – 3,700	3,250 – 3,310	3,230



## PNLF

Panin Financial Tbk.



**(PNLF).** Price breakout from resistance in the sideways area and has the potential to transition back to an uptrend in the short term. Price is supported by stochastic indicator moving bullish and MACD line moving bullish (histogram still moving positive) as well as significantly increasing volume.

**ADVICE:** Accumulate buy or trading buy.

Entry Buy	Target Price	Support	Cut Loss
268 – 278	290 – 300	264 – 268	260



## Forecast – Technical Analysis

Ticker	MA5	RSI Rec	MACD Trend	Recomm.	Pivot Point	Support 1	Support 2	Resistance 1	Resistance 2	Stop Loss Level
JCI	Negative	Overbought	Positive	Sell	7,925	7,900	7,900	7,950	7,975	7,775
AADI	Positive	Trading	Negative	Hold	6,825	6,800	6,750	6,875	6,900	6,650
ACES	Positive	Oversold	Negative	Spec. Buy	459	454	451	462	467	444
ADMIR	Negative	Trading	Negative	Sell	1,015	1,010	995	1,030	1,035	980
ADRO	Positive	Oversold	Negative	Spec. Buy	1,765	1,735	1,710	1,790	1,820	1,685
AKRA	Positive	Trading	Negative	Hold	1,250	1,240	1,225	1,265	1,275	1,205
AMMN	Positive	Trading	Positive	Spec. Buy	8,550	8,475	8,375	8,650	8,725	8,250
AMRT	Negative	Trading	Negative	Sell	2,310	2,275	2,240	2,345	2,380	2,205
ANTM	Positive	Trading	Negative	Hold	2,865	2,830	2,805	2,890	2,925	2,765
ARTO	Negative	Overbought	Positive	Sell	2,270	2,200	2,150	2,320	2,390	2,120
ASII	Negative	Overbought	Positive	Sell	5,750	5,700	5,650	5,800	5,850	5,550
BBCA	Positive	Trading	Positive	Spec. Buy	8,500	8,475	8,425	8,550	8,575	8,300
BBNI	Negative	Overbought	Positive	Sell	4,470	4,415	4,390	4,495	4,550	4,320
BBRI	Negative	Overbought	Positive	Sell	4,210	4,145	4,110	4,245	4,310	4,045
BBTN	Negative	Trading	Positive	Hold	1,310	1,295	1,285	1,320	1,335	1,265
BMRI	Negative	Trading	Positive	Hold	4,950	4,920	4,890	4,980	5,000	4,815
BRIS	Positive	Trading	Negative	Hold	2,765	2,735	2,725	2,775	2,805	2,680
BRPT	Positive	Trading	Negative	Hold	2,275	2,245	2,225	2,295	2,325	2,190
CPIN	Negative	Oversold	Negative	Spec. Buy	4,495	4,460	4,415	4,540	4,575	4,350
CTRA	Negative	Overbought	Positive	Sell	1,045	1,015	990	1,070	1,100	975
EXCL	Negative	Overbought	Positive	Sell	2,935	2,890	2,855	2,970	3,015	2,810
GOTO	Positive	Trading	Negative	Hold	61	60	59	62	63	58
ICBP	Positive	Oversold	Positive	Buy	9,550	9,475	9,425	9,600	9,675	9,275
INCO	Negative	Trading	Negative	Sell	3,705	3,660	3,625	3,740	3,785	3,570
INDF	Positive	Oversold	Negative	Spec. Buy	7,800	7,675	7,600	7,875	8,000	7,475
INKP	Positive	Overbought	Negative	Sell	7,825	7,775	7,700	7,900	7,950	7,600
ISAT	Positive	Oversold	Negative	Spec. Buy	2,080	2,035	2,010	2,105	2,150	1,975
ITMG	Negative	Trading	Negative	Sell	22,400	22,275	22,200	22,475	22,600	21,850
JPFA	Negative	Trading	Positive	Hold	1,635	1,610	1,590	1,655	1,680	1,565
JSMR	Positive	Trading	Negative	Hold	3,385	3,305	3,245	3,445	3,525	3,195
KLBF	Positive	Oversold	Negative	Spec. Buy	1,330	1,300	1,265	1,365	1,395	1,245
MAPA	Positive	Trading	Positive	Spec. Buy	655	650	640	665	670	630
MAPI	Positive	Overbought	Positive	Hold	1,360	1,350	1,340	1,370	1,380	1,320
MBMA	Negative	Oversold	Negative	Spec. Buy	418	411	408	421	428	401
MDKA	Negative	Trading	Negative	Sell	2,285	2,245	2,215	2,315	2,355	2,180
MEDC	Positive	Trading	Positive	Spec. Buy	1,240	1,225	1,205	1,260	1,275	1,185
PGAS	Negative	Overbought	Positive	Sell	1,725	1,710	1,695	1,740	1,755	1,670
PGEO	Positive	Trading	Negative	Hold	1,435	1,415	1,395	1,455	1,475	1,375
PTBA	Negative	Trading	Positive	Hold	2,420	2,410	2,400	2,430	2,440	2,365
SCMA	Negative	Strong Sell	Positive	Sell	326	295	274	347	378	269
SMGR	Negative	Overbought	Positive	Sell	2,790	2,745	2,710	2,825	2,870	2,665
SMRA	Negative	Overbought	Positive	Sell	471	465	461	475	481	454
TLKM	Positive	Overbought	Positive	Hold	3,300	3,245	3,200	3,345	3,400	3,150
TOWR	Negative	Overbought	Negative	Strong Sell	650	610	575	685	725	565
UNTR	Negative	Overbought	Positive	Sell	25,625	25,100	24,725	26,000	26,525	24,350
UNVR	Negative	Trading	Negative	Sell	1,785	1,755	1,745	1,795	1,825	1,715



## Kiwoom Research Team



### HEAD OFFICE

Treasury Tower 27th Floor Unit A, District 8 Kawasan SCBD Lot 28,  
Jl.Jend.Sudirman Kav 52-53, Jakarta Selatan 12190

Tel : (021) 5010 5800  
Fax : (021) 5010 5820  
Email : [cs@kiwoom.co.id](mailto:cs@kiwoom.co.id)

PT Kiwoom Sekuritas Indonesia is licensed and supervised by the Financial Services Authority (OJK)

### OTHER DISCLOSURES

All Kiwoom's research reports made available to clients are simultaneously available on our own website <http://www.kiwoom.co.id/>. Not all research content is redistributed, e-mailed or made available to third-party aggregators. For all research reports available on a particular stock, please contact your sales representative. Any data discrepancies in this report could be the result of different calculations and/or adjustments.

### DISCLAIMER

This report has been prepared and issued by PT Kiwoom Sekuritas Indonesia. Information has been obtained from sources believed to be reliable but Kiwoom Securities do not warrant its completeness or accuracy. Forward-looking information or statements in this report contain information that is based on forecast of future results, estimates of amounts not yet determinable, assumptions, and therefore involve known and unknown risks and uncertainties which may cause the actual results, performance or achievements of their subject matter to be materially different from current expectations. To the fullest extent allowed by law, PT Kiwoom Sekuritas Indonesia shall not be liable for any direct, indirect or consequential losses, loss of profits, damages, costs or expenses incurred or suffered by any person or organization arising from reliance on or use of any information contained on this report. The information that we provide should not be construed in any manner whatsoever as, personalized advice. No mention of a particular security in this report constitutes a recommendation to buy, sell or hold that or any security, or that any particular security, portfolio of securities, transaction or investment strategy is suitable for any specific person. This report is being supplied to you solely for your information and may not be reproduced by, further distributed to or published in whole or in part by, any other person.