



Technical Recommendation

Jakarta Composite Index Range Today

7,910 / 7,850 – 7,800 / 7,730

8,000 – 8,017 / 8,200

Support

Resistance

Published on 28 August 2025



Jakarta Composite Index

JCI closed up 30.4 pts / 0.38% to the 7,936.18 level, still held steady above the first Support: MA10 at the 7,910 level. However, JCI position appears stuck in the psychological Resistance area of 8,000, making **KIWOOM RESEARCH** have to remind once again to closely monitor the Trailing Stop level while Wait & See.

ADVICE: WAIT & SEE; Set your TRAILING STOP.



ESSA

ESSA Industries Indonesia Tbk.



(ESSA). Price strengthened and formed a swing low. Price is supported by stochastic indicator with a potential golden cross and MACD line with a potential golden cross (histogram starting to move in a positive direction) as well as increasing volume.

ADVICE: Accumulate buy or trading buy.

Entry Buy	Target Price	Support	Cut Loss
570 – 590	615 – 640	560 – 570	550



INKP

Indah Kiat Pulp & Paper Tbk.



(INKP). Price is attempting to break a bullish flag pattern. Price is supported by stochastic indicator golden cross and MACD histogram starting to move in a positive direction as well as increasing volume.

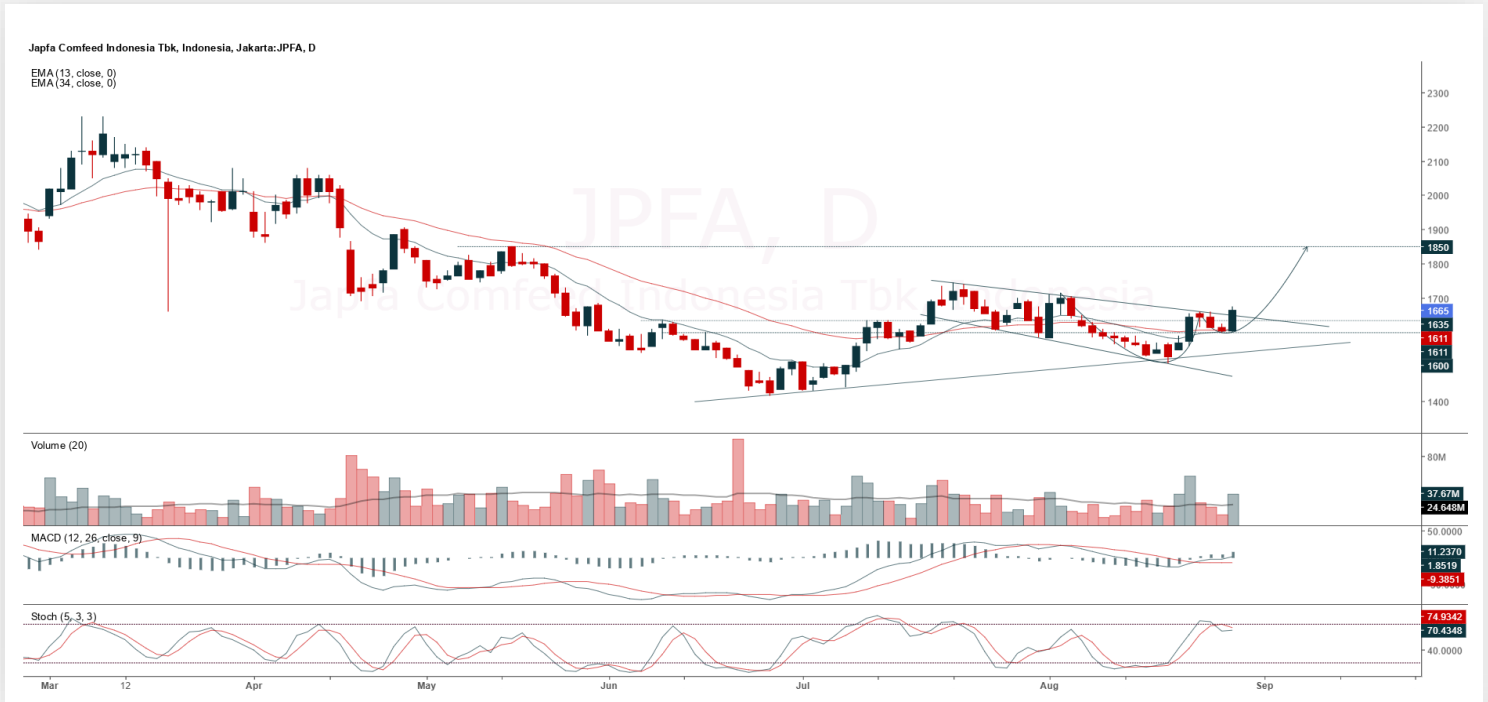
ADVICE: Accumulate buy or trading buy.

Entry Buy	Target Price	Support	Cut Loss
7,700 – 7,950	8,275 – 8,600	7,575 – 7,700	7,525



JPFA

Japfa Comfeed Indonesia Tbk.



(JPFA). Price is rallying again and breaking resistance. Price is supported by stochastic indicator with a potential golden cross and MACD line bullish (histogram moving positive) as well as significantly increasing volume.

ADVICE: Averaging up or trading buy.

Entry Buy	Target Price	Support	Cut Loss
1,605 – 1,665	1,735 – 1,800	1,575 – 1,605	1,565



SRTG

Saratoga Investama Sedaya Tbk.



(SRTG). Price successfully broke out the 1,900 level. Price is supported by stochastic indicator golden cross again and MACD line golden cross again (histogram moving positive again) as well as significantly increasing volume.

ADVICE: Accumulate buy or trading buy.

Entry Buy	Target Price	Support	Cut Loss
1,905 – 1,975	2,060 – 2,130	1,875 – 1,905	1,865



Forecast – Technical Analysis

Ticker	MA5	RSI Rec	MACD Trend	Recomm.	Pivot Point	Support 1	Support 2	Resistance 1	Resistance 2	Stop Loss Level
JCI	Positive	Overbought	Negative	Sell	7,925	7,900	7,875	7,950	7,975	7,750
AADI	Negative	Trading	Positive	Hold	7,100	7,050	6,925	7,225	7,275	6,825
ACES	Negative	Oversold	Negative	Spec. Buy	460	457	454	463	466	447
ADMIR	Positive	Trading	Negative	Hold	1,030	1,015	1,005	1,040	1,055	990
ADRO	Positive	Trading	Negative	Hold	1,805	1,745	1,705	1,845	1,905	1,680
AKRA	Positive	Trading	Negative	Hold	1,220	1,205	1,190	1,235	1,250	1,170
AMMN	Positive	Trading	Negative	Hold	8,225	8,075	7,850	8,450	8,600	7,725
AMRT	Positive	Trading	Negative	Hold	2,250	2,230	2,210	2,270	2,290	2,175
ANTM	Negative	Trading	Positive	Hold	2,940	2,890	2,840	2,990	3,040	2,795
ARTO	Positive	Overbought	Positive	Hold	2,260	2,225	2,180	2,305	2,340	2,145
ASII	Negative	Overbought	Positive	Sell	5,600	5,475	5,375	5,700	5,825	5,300
BBCA	Positive	Trading	Negative	Hold	8,275	8,200	8,125	8,350	8,425	8,000
BBNI	Negative	Trading	Positive	Hold	4,465	4,425	4,365	4,525	4,565	4,295
BBRI	Positive	Trading	Positive	Spec. Buy	4,120	4,090	4,040	4,170	4,200	3,980
BBTN	Positive	Trading	Positive	Spec. Buy	1,255	1,235	1,210	1,280	1,300	1,195
BMRI	Positive	Trading	Positive	Spec. Buy	4,830	4,780	4,750	4,860	4,910	4,680
BRIS	Positive	Trading	Negative	Hold	2,750	2,715	2,680	2,785	2,820	2,635
BRPT	Positive	Trading	Negative	Hold	2,240	2,135	2,040	2,335	2,440	2,005
CPIN	Positive	Oversold	Negative	Spec. Buy	4,415	4,355	4,325	4,445	4,505	4,260
CTRA	Positive	Overbought	Positive	Hold	1,075	1,055	1,025	1,105	1,125	1,010
EXCL	Positive	Trading	Negative	Hold	2,835	2,695	2,505	3,025	3,165	2,465
GOTO	Positive	Trading	Negative	Hold	61	60	60	61	62	59
ICBP	Positive	Oversold	Negative	Spec. Buy	9,375	9,300	9,275	9,400	9,475	9,125
INCO	Positive	Trading	Negative	Hold	3,735	3,625	3,505	3,855	3,965	3,450
INDF	Positive	Oversold	Negative	Spec. Buy	7,650	7,600	7,500	7,750	7,800	7,400
INKP	Positive	Overbought	Negative	Sell	7,800	7,600	7,375	8,025	8,225	7,250
ISAT	Positive	Oversold	Negative	Spec. Buy	2,070	2,050	2,010	2,110	2,130	1,980
ITMG	Negative	Trading	Negative	Sell	22,400	22,325	22,225	22,500	22,575	21,900
JPFA	Negative	Trading	Positive	Hold	1,635	1,600	1,560	1,675	1,710	1,540
JSMR	Positive	Oversold	Negative	Spec. Buy	3,420	3,390	3,360	3,450	3,480	3,310
KLBF	Positive	Oversold	Negative	Spec. Buy	1,290	1,260	1,245	1,305	1,335	1,225
MAPA	Positive	Trading	Negative	Hold	645	640	625	660	665	615
MAPI	Positive	Trading	Positive	Spec. Buy	1,290	1,265	1,230	1,325	1,350	1,215
MBMA	Positive	Trading	Negative	Hold	426	408	392	442	460	386
MDKA	Positive	Trading	Negative	Hold	2,330	2,245	2,160	2,415	2,500	2,125
MEDC	Negative	Trading	Positive	Hold	1,220	1,205	1,190	1,235	1,250	1,170
PGAS	Negative	Trading	Positive	Hold	1,685	1,665	1,645	1,705	1,725	1,620
PGEO	Negative	Trading	Negative	Sell	1,565	1,515	1,480	1,600	1,650	1,460
PTBA	Negative	Trading	Positive	Hold	2,475	2,450	2,425	2,500	2,525	2,390
SCMA	Negative	Strong Sell	Positive	Sell	339	323	311	351	367	306
SMGR	Positive	Trading	Positive	Spec. Buy	2,750	2,710	2,670	2,790	2,830	2,630
SMRA	Positive	Overbought	Positive	Hold	468	456	452	472	484	445
TLKM	Negative	Trading	Negative	Sell	3,180	3,110	3,030	3,260	3,330	2,985
TOWR	Negative	Trading	Negative	Sell	645	640	630	655	660	620
UNTR	Negative	Trading	Positive	Hold	24,875	24,550	24,300	25,125	25,450	23,950
UNVR	Positive	Trading	Negative	Hold	1,770	1,745	1,710	1,805	1,830	1,685



Kiwoom Research Team



HEAD OFFICE

Treasury Tower 27th Floor Unit A, District 8 Kawasan SCBD Lot 28,
Jl.Jend.Sudirman Kav 52-53, Jakarta Selatan 12190

Tel : (021) 5010 5800
Fax : (021) 5010 5820
Email : cs@kiwoom.co.id

PT Kiwoom Sekuritas Indonesia is licensed and supervised by the Financial Services Authority (OJK)

OTHER DISCLOSURES

All Kiwoom's research reports made available to clients are simultaneously available on our own website <http://www.kiwoom.co.id/>. Not all research content is redistributed, e-mailed or made available to third-party aggregators. For all research reports available on a particular stock, please contact your sales representative. Any data discrepancies in this report could be the result of different calculations and/or adjustments.

DISCLAIMER

This report has been prepared and issued by PT Kiwoom Sekuritas Indonesia. Information has been obtained from sources believed to be reliable but Kiwoom Securities do not warrant its completeness or accuracy. Forward-looking information or statements in this report contain information that is based on forecast of future results, estimates of amounts not yet determinable, assumptions, and therefore involve known and unknown risks and uncertainties which may cause the actual results, performance or achievements of their subject matter to be materially different from current expectations. To the fullest extent allowed by law, PT Kiwoom Sekuritas Indonesia shall not be liable for any direct, indirect or consequential losses, loss of profits, damages, costs or expenses incurred or suffered by any person or organization arising from reliance on or use of any information contained on this report. The information that we provide should not be construed in any manner whatsoever as, personalized advice. No mention of a particular security in this report constitutes a recommendation to buy, sell or hold that or any security, or that any particular security, portfolio of securities, transaction or investment strategy is suitable for any specific person. This report is being supplied to you solely for your information and may not be reproduced by, further distributed to or published in whole or in part by, any other person.