



Technical Recommendation

Jakarta Composite Index Range Today

7,500 / 7,400

Support

7,780 – 7,885 / 8,000 – 8,022

Resistance

Published on 02 September 2025



Jakarta Composite Index

JCI: Foreign selling in the stock market intensified on Monday with a Foreign Net Sell (all market) of IDR 2.15T, compared to Friday which had recorded a net sell of Rp1.12 trillion, the largest since July 31. JCI plunged 94.4pts / -1.21% to the level of 7,736.07, rebounding from the Low point of 7,547.56 due to the impact of demonstrations that turned into riots over the past weekend.

Seeing the closing position still within the Uptrend corridor in the RISING WEDGE pattern formed since the April bottom, **KIWOOM RESEARCH** views this upward trend can still be maintained as long as the Support 7,500 is not breached. However, monitoring the still unstable socio-political situation and anticipating further waves of demonstrations this week, **KIWOOM RESEARCH** suggests adopting a stronger WAIT & SEE stance for now. JCI needs to climb back above MA20 then MA10 within the Resistance range: 7,780 – 7,885 to secure the bull swing. Meanwhile, the last tolerance anticipation for a decline lies at the critical Moving Average Support: MA50 at the level of 7,400.

ADVISE: HOLD; WAIT & SEE.



AADI

Adaro Andalan Indonesia Tbk.



(AADI). Price successfully rebounded and is still in the sideways area. Price is supported by the stochastic indicator with a potential golden cross, MACD line moving golden cross (Histogram moving positive), and increasing volume.

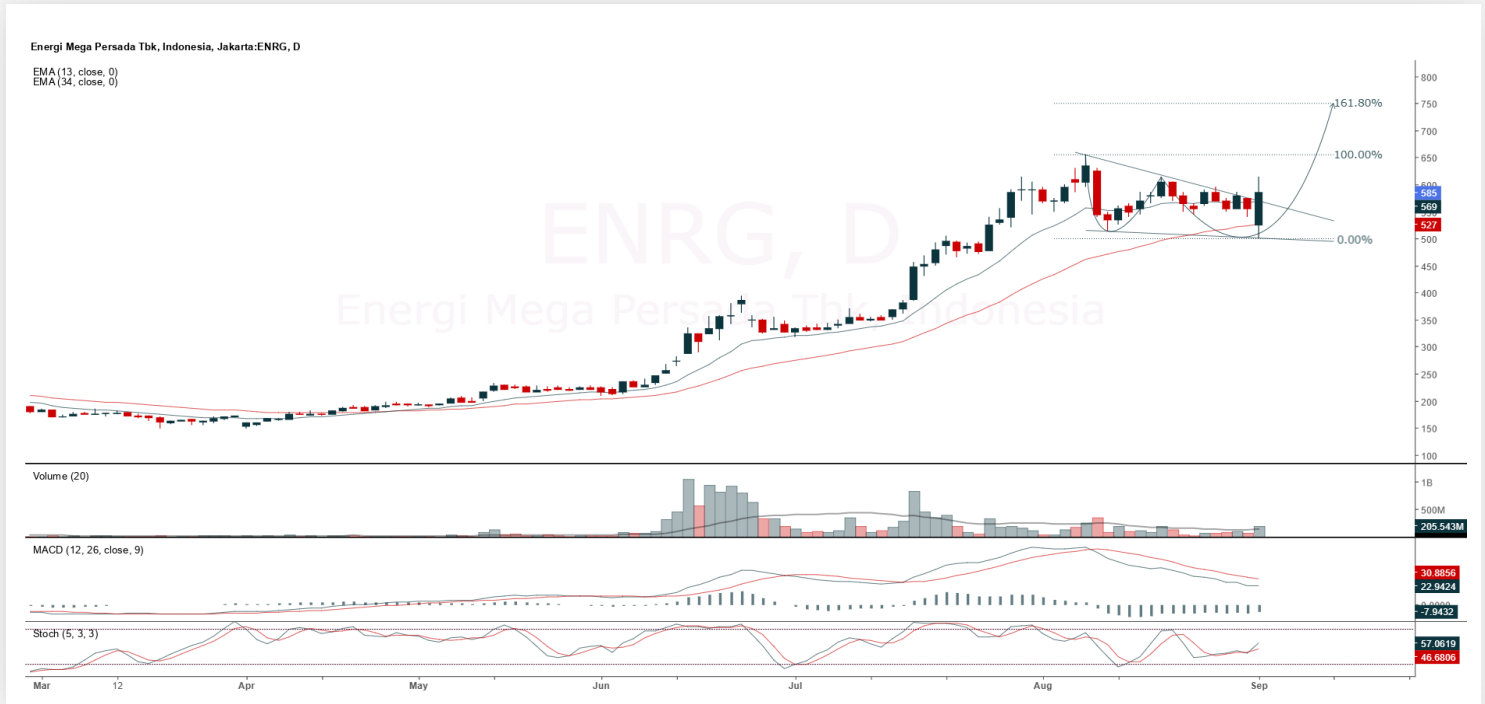
ADVICE: Averaging up or trading buy.

Entry Buy	Target Price	Support	Cut Loss
6,800 – 7,050	7,350 – 7,625	6,700 – 6,800	6,650



ENRG

Energi Mega Persada Tbk.



(ENRG). Price successfully rebounded after testing the support (false breakdown support). Price is supported by the stochastic indicator moving golden cross, MACD line starting to flatten (Histogram starting to move positive), and increasing volume.

ADVICE: Averaging up or trading buy.

Entry Buy	Target Price	Support	Cut Loss
565 – 585	610 – 635	555 – 565	545



MDKA

Merdeka Copper Gold Tbk.



(MDKA). Price successfully closed higher and is still in an uptrend condition. Price is supported by the stochastic indicator still moving bullish, MACD line still moving bullish (Histogram moving positive), and increasing volume trend.

ADVICE: Averaging up or trading buy.

Entry Buy	Target Price	Support	Cut Loss
2,400 – 2,490	2,590 – 2,690	2,360 – 2,400	2,340



SMGR

Semen Indonesia (Persero) Tbk.



(SMGR). Price rebounded again after touching the support area. Price is supported by the stochastic indicator moving golden cross, MACD line still moving bullish, and increasing volume.

ADVICE: Buy on weakness or trading buy.

Entry Buy	Target Price	Support	Cut Loss
2,630 – 2,720	2,830 – 2,940	2,580 – 2,630	2,560



Forecast – Technical Analysis

Ticker	MA5	RSI Rec	MACD Trend	Recomm.	Pivot Point	Support 1	Support 2	Resistance 1	Resistance 2	Stop Loss Level
JCI	Positive	Trading	Negative	Hold	7,675	7,550	7,425	7,800	7,900	7,325
AADI	Negative	Trading	Positive	Hold	6,950	6,725	6,500	7,175	7,400	6,400
ACES	Positive	Oversold	Negative	Spec. Buy	444	434	422	456	466	416
ADMIR	Positive	Oversold	Negative	Spec. Buy	975	955	925	1,005	1,025	910
ADRO	Negative	Oversold	Negative	Spec. Buy	1,710	1,680	1,645	1,745	1,775	1,620
AKRA	Positive	Oversold	Negative	Spec. Buy	1,170	1,140	1,105	1,205	1,235	1,085
AMMN	Positive	Trading	Negative	Hold	7,800	7,650	7,400	8,050	8,200	7,300
AMRT	Positive	Oversold	Negative	Spec. Buy	2,145	2,115	2,045	2,215	2,245	2,010
ANTM	Negative	Overbought	Positive	Sell	3,095	2,910	2,765	3,240	3,425	2,725
ARTO	Positive	Trading	Negative	Hold	2,155	2,075	1,995	2,235	2,315	1,965
ASII	Positive	Trading	Negative	Hold	5,350	5,175	5,050	5,475	5,650	4,960
BBCA	Positive	Oversold	Negative	Spec. Buy	7,825	7,600	7,375	8,050	8,275	7,275
BBNI	Positive	Trading	Negative	Hold	4,260	4,120	4,010	4,370	4,510	3,950
BBRI	Positive	Trading	Negative	Hold	3,945	3,880	3,795	4,030	4,095	3,740
BBTN	Positive	Trading	Positive	Spec. Buy	1,255	1,220	1,185	1,290	1,325	1,165
BMRI	Positive	Oversold	Negative	Spec. Buy	4,570	4,470	4,360	4,680	4,780	4,295
BRIS	Positive	Trading	Negative	Hold	2,655	2,585	2,535	2,705	2,775	2,495
BRPT	Positive	Trading	Negative	Hold	2,110	2,065	2,010	2,165	2,210	1,975
CPIN	Positive	Oversold	Negative	Spec. Buy	4,245	4,145	3,995	4,395	4,495	3,935
CTRA	Positive	Trading	Negative	Hold	985	955	930	1,010	1,040	915
EXCL	Positive	Trading	Negative	Hold	2,705	2,640	2,575	2,770	2,835	2,535
GOTO	Positive	Oversold	Negative	Spec. Buy	57	57	55	59	59	54
ICBP	Positive	Oversold	Negative	Spec. Buy	8,975	8,700	8,350	9,325	9,600	8,225
INCO	Negative	Trading	Negative	Sell	3,645	3,550	3,435	3,760	3,855	3,385
INDF	Positive	Oversold	Negative	Spec. Buy	7,250	7,075	6,875	7,450	7,625	6,775
INKP	Positive	Trading	Negative	Hold	7,550	7,200	6,775	7,975	8,325	6,675
ISAT	Positive	Oversold	Negative	Spec. Buy	1,965	1,915	1,795	2,085	2,135	1,770
ITMG	Positive	Trading	Negative	Hold	22,100	21,925	21,725	22,300	22,475	21,400
JPFA	Negative	Trading	Positive	Hold	1,605	1,565	1,510	1,660	1,700	1,485
JSMR	Positive	Oversold	Negative	Spec. Buy	3,285	3,185	3,105	3,365	3,465	3,055
KLBF	Positive	Oversold	Negative	Spec. Buy	1,160	1,125	1,095	1,190	1,225	1,080
MAPA	Positive	Oversold	Negative	Spec. Buy	620	595	580	635	660	570
MAPI	Positive	Trading	Negative	Hold	1,175	1,145	1,100	1,220	1,250	1,080
MBMA	Negative	Trading	Positive	Hold	410	399	386	423	434	380
MDKA	Negative	Trading	Positive	Hold	2,445	2,325	2,215	2,555	2,675	2,180
MEDC	Positive	Oversold	Negative	Spec. Buy	1,130	1,110	1,075	1,165	1,185	1,060
PGAS	Positive	Trading	Negative	Hold	1,675	1,655	1,615	1,715	1,735	1,590
PGEO	Negative	Trading	Negative	Sell	1,380	1,315	1,240	1,455	1,520	1,225
PTBA	Negative	Trading	Positive	Hold	2,370	2,330	2,280	2,420	2,460	2,245
SCMA	Positive	Overbought	Positive	Hold	315	294	277	332	353	273
SMGR	Positive	Trading	Positive	Spec. Buy	2,640	2,510	2,390	2,760	2,890	2,355
SMRA	Positive	Trading	Negative	Hold	437	419	403	453	471	396
TLKM	Positive	Trading	Negative	Hold	3,065	3,020	2,915	3,170	3,215	2,870
TOWR	Positive	Trading	Negative	Hold	595	575	555	615	635	545
UNTR	Positive	Trading	Negative	Hold	24,200	23,600	22,900	24,900	25,500	22,550
UNVR	Positive	Trading	Negative	Hold	1,675	1,645	1,610	1,710	1,740	1,585



Kiwoom Research Team



HEAD OFFICE

Treasury Tower 27th Floor Unit A, District 8 Kawasan SCBD Lot 28,
Jl.Jend.Sudirman Kav 52-53, Jakarta Selatan 12190

Tel : (021) 5010 5800
Fax : (021) 5010 5820
Email : cs@kiwoom.co.id

PT Kiwoom Sekuritas Indonesia is licensed and supervised by the Financial Services Authority (OJK)

OTHER DISCLOSURES

All Kiwoom's research reports made available to clients are simultaneously available on our own website <http://www.kiwoom.co.id/>. Not all research content is redistributed, e-mailed or made available to third-party aggregators. For all research reports available on a particular stock, please contact your sales representative. Any data discrepancies in this report could be the result of different calculations and/or adjustments.

DISCLAIMER

This report has been prepared and issued by PT Kiwoom Sekuritas Indonesia. Information has been obtained from sources believed to be reliable but Kiwoom Securities do not warrant its completeness or accuracy. Forward-looking information or statements in this report contain information that is based on forecast of future results, estimates of amounts not yet determinable, assumptions, and therefore involve known and unknown risks and uncertainties which may cause the actual results, performance or achievements of their subject matter to be materially different from current expectations. To the fullest extent allowed by law, PT Kiwoom Sekuritas Indonesia shall not be liable for any direct, indirect or consequential losses, loss of profits, damages, costs or expenses incurred or suffered by any person or organization arising from reliance on or use of any information contained on this report. The information that we provide should not be construed in any manner whatsoever as, personalized advice. No mention of a particular security in this report constitutes a recommendation to buy, sell or hold that or any security, or that any particular security, portfolio of securities, transaction or investment strategy is suitable for any specific person. This report is being supplied to you solely for your information and may not be reproduced by, further distributed to or published in whole or in part by, any other person.