



Technical Recommendation

Jakarta Composite Index Range Today

7,790 / 7,600 – 7,585

Support

7,878 / 8,000 – 8,022

Resistance

Published on 03 September 2025



Jakarta Composite Index

JCI recorded another gain on Tuesday's trading, rising 65.5pts / 0.85% to the level of 7,801.59 which means it is back above the MA20 level / 7,790, now becoming a critical Support to secure this medium-term uptrend, inside the RISING WEDGE pattern.

Today the focus is on JCI which will soon test the more important MA10 Resistance at the level of 7,878, which if it can be broken will bring it back to the TARGET level of 8,000s again.

ADVISE: WAIT & SEE; AVERAGE UP accordingly.



AMMN

Amman Mineral Internasional Tbk.



(AMMN). Price formed another swing low and has the potential to retest the nearest resistance. Price is supported by the Stochastic indicator moving bullish, MACD Histogram starting to move into positive territory, and an increasing volume trend.

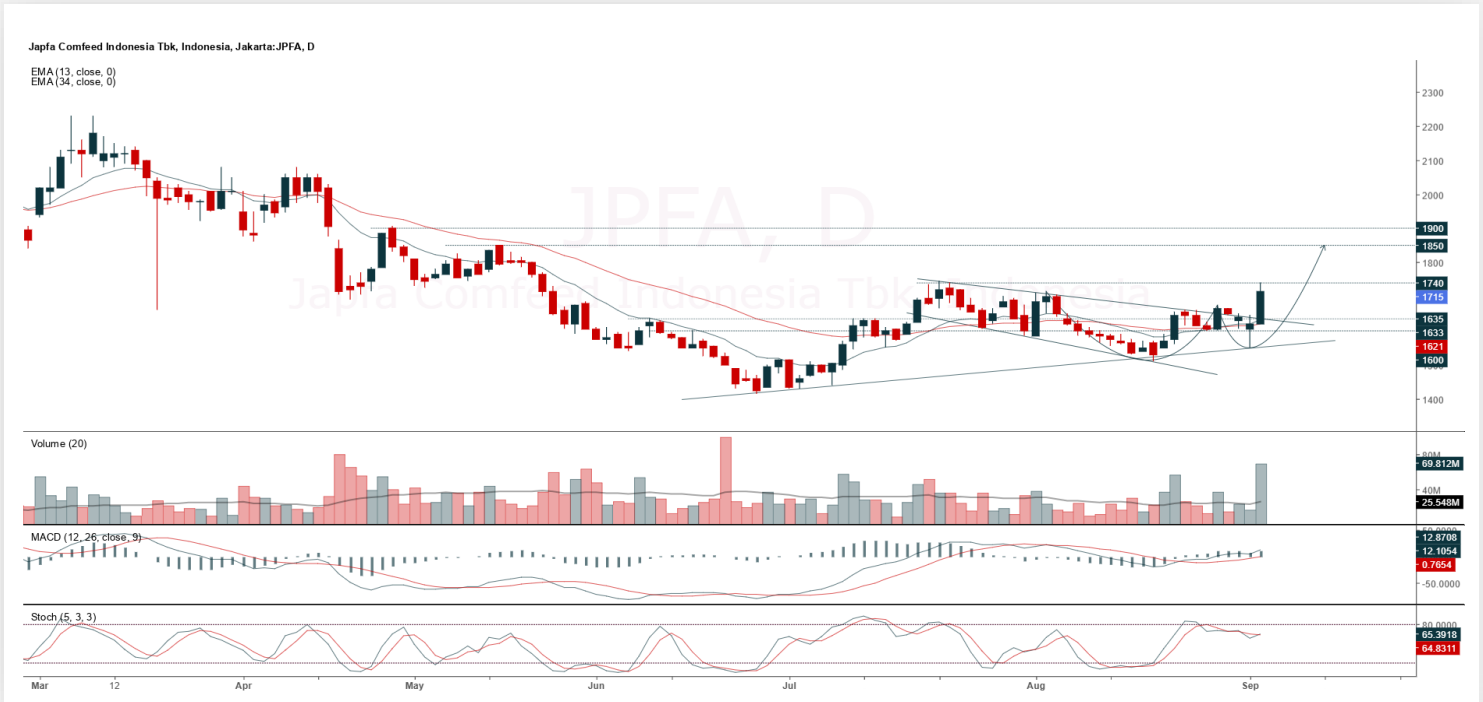
ADVICE: Accumulate buy or trading buy.

Entry Buy	Target Price	Support	Cut Loss
7,725 – 8,000	8,325 – 8,650	7,575 – 7,725	7,525



JPFA

Japfa Comfeed Indonesia Tbk.



(JPFA). Price broke out of the descending broadening wedge pattern and has the potential to continue to the next resistance. Price is supported by the Stochastic indicator moving into a golden cross, MACD line still moving bullish (Histogram moving positive), and significantly increasing volume.

ADVICE: Buy on break 1,745 or trading buy.

Entry Buy	Target Price	Support	Cut Loss
1,655 – 1,715	1,785 – 1,850	1,625 – 1,655	1,615



TINS

Timah Tbk.



(TINS). Price formed another swing low and has the potential to test the nearest resistance. Price is supported by the Stochastic indicator moving bullish, MACD line still moving bullish (Histogram moving positive), and an increasing volume trend.

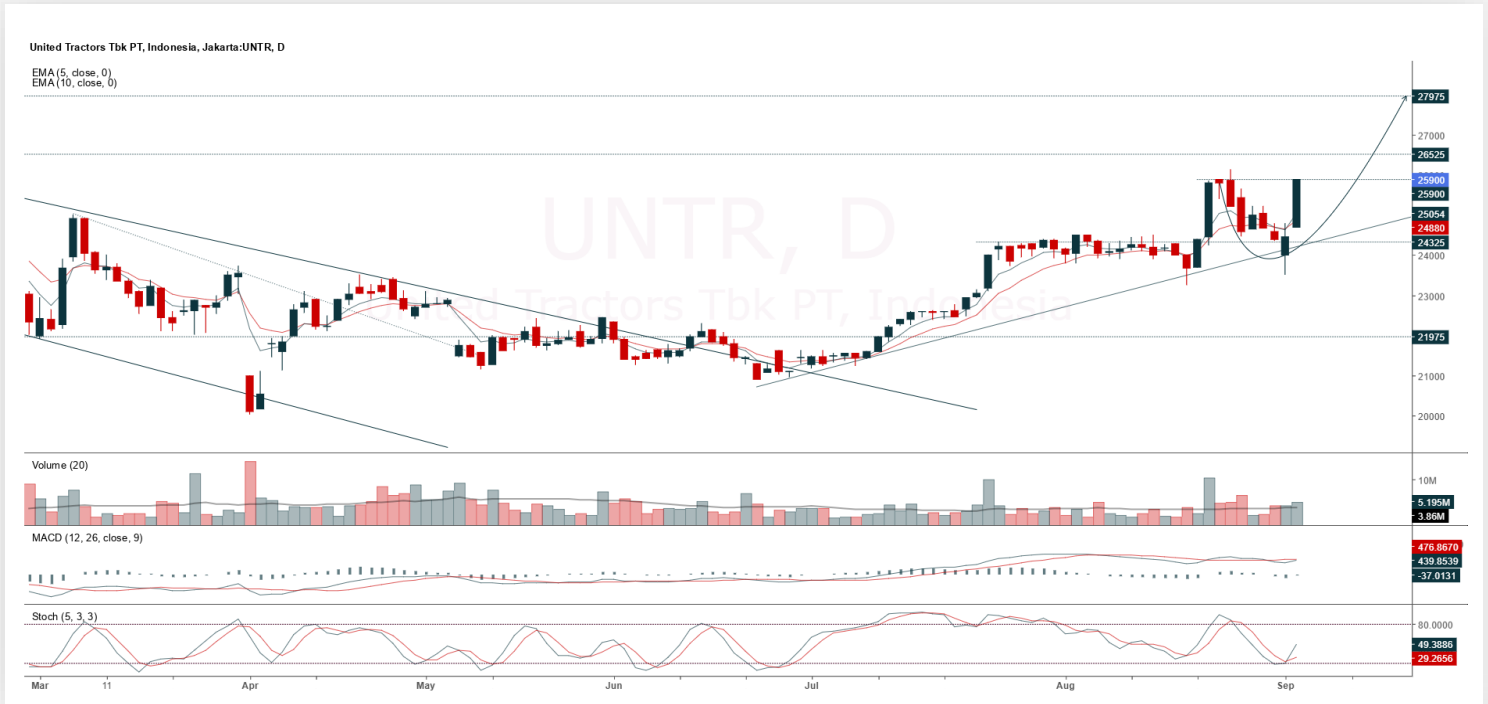
ADVICE: Accumulate buy or trading buy.

Entry Buy	Target Price	Support	Cut Loss
1,000 – 1,035	1,080 – 1,120	980 – 1,000	970



UNTR

United Tractors Tbk.



(UNTR). Price formed another swing low and has the potential to continue the uptrend. Price is supported by the Stochastic indicator moving into a golden cross, MACD line with potential to form another golden cross (Histogram starting to move into positive territory), and an increasing volume trend.

ADVICE: Buy on break 26,125 or trading buy.

Entry Buy	Target Price	Support	Cut Loss
25,000 – 25,900	26,950 – 27,975	24,500 – 25,000	24,450



Forecast – Technical Analysis

Ticker	MA5	RSI Rec	MACD Trend	Recomm.	Pivot Point	Support 1	Support 2	Resistance 1	Resistance 2	Stop Loss Level
JCI	Positive	Trading	Negative	Hold	7,800	7,750	7,725	7,825	7,875	7,600
AADI	Positive	Trading	Positive	Spec. Buy	7,150	7,100	7,050	7,200	7,250	6,950
ACES	Positive	Oversold	Negative	Spec. Buy	445	435	429	451	461	422
ADMR	Positive	Trading	Negative	Hold	1,000	985	980	1,005	1,020	965
ADRO	Negative	Oversold	Negative	Spec. Buy	1,730	1,715	1,705	1,740	1,755	1,680
AKRA	Positive	Trading	Negative	Hold	1,200	1,190	1,180	1,210	1,220	1,160
AMMN	Positive	Trading	Negative	Hold	8,025	7,900	7,825	8,100	8,225	7,700
AMRT	Positive	Oversold	Negative	Spec. Buy	2,130	2,100	2,060	2,170	2,200	2,030
ANTM	Negative	Overbought	Positive	Sell	3,385	3,290	3,195	3,480	3,575	3,145
ARTO	Positive	Trading	Negative	Hold	2,220	2,145	2,120	2,245	2,320	2,085
ASII	Positive	Trading	Negative	Hold	5,475	5,425	5,325	5,575	5,625	5,250
BBCA	Positive	Oversold	Negative	Spec. Buy	8,050	7,925	7,875	8,100	8,225	7,750
BBNI	Positive	Trading	Negative	Hold	4,345	4,255	4,205	4,395	4,485	4,140
BBRI	Positive	Trading	Negative	Hold	3,990	3,925	3,900	4,015	4,080	3,840
BBTN	Negative	Trading	Negative	Sell	1,280	1,260	1,240	1,300	1,320	1,220
BMRI	Positive	Oversold	Negative	Spec. Buy	4,605	4,535	4,495	4,645	4,715	4,425
BRIS	Positive	Trading	Negative	Hold	2,705	2,680	2,665	2,720	2,745	2,625
BRPT	Negative	Trading	Negative	Sell	2,220	2,120	2,040	2,300	2,400	2,010
CPIN	Positive	Oversold	Negative	Spec. Buy	4,305	4,245	4,185	4,365	4,425	4,120
CTRA	Positive	Trading	Negative	Hold	1,005	990	970	1,025	1,040	955
EXCL	Positive	Trading	Negative	Hold	2,750	2,715	2,690	2,775	2,810	2,645
GOTO	Positive	Oversold	Negative	Spec. Buy	58	57	56	59	60	55
ICBP	Positive	Oversold	Negative	Spec. Buy	9,250	9,150	9,125	9,275	9,375	8,975
INCO	Negative	Trading	Negative	Sell	3,720	3,650	3,610	3,760	3,830	3,555
INDF	Positive	Oversold	Negative	Spec. Buy	7,500	7,375	7,325	7,550	7,675	7,200
INKP	Negative	Overbought	Negative	Strong Sell	8,050	7,925	7,800	8,175	8,300	7,675
ISAT	Positive	Oversold	Negative	Spec. Buy	1,990	1,940	1,905	2,025	2,075	1,875
ITMG	Positive	Trading	Negative	Hold	22,300	22,150	22,025	22,425	22,575	21,700
JPFA	Negative	Overbought	Positive	Sell	1,675	1,610	1,555	1,730	1,795	1,530
JSMR	Positive	Oversold	Negative	Spec. Buy	3,350	3,325	3,310	3,365	3,390	3,260
KLBF	Positive	Oversold	Negative	Spec. Buy	1,170	1,150	1,135	1,185	1,205	1,120
MAPA	Positive	Oversold	Negative	Spec. Buy	615	600	585	630	645	575
MAPI	Positive	Trading	Negative	Hold	1,185	1,165	1,145	1,205	1,225	1,125
MBMA	Negative	Trading	Positive	Hold	423	411	405	429	441	398
MDKA	Negative	Overbought	Positive	Sell	2,570	2,520	2,480	2,610	2,660	2,445
MEDC	Positive	Trading	Negative	Hold	1,185	1,130	1,080	1,235	1,290	1,065
PGAS	Positive	Trading	Negative	Hold	1,685	1,670	1,650	1,705	1,720	1,625
PGEO	Positive	Trading	Negative	Hold	1,455	1,420	1,400	1,475	1,510	1,375
PTBA	Positive	Trading	Positive	Spec. Buy	2,415	2,395	2,385	2,425	2,445	2,345
SCMA	Positive	Overbought	Positive	Hold	329	318	313	334	345	308
SMGR	Positive	Trading	Positive	Spec. Buy	2,730	2,680	2,630	2,780	2,830	2,590
SMRA	Positive	Trading	Negative	Hold	452	445	440	457	464	433
TLKM	Positive	Trading	Negative	Hold	3,095	3,050	3,005	3,140	3,185	2,960
TOWR	Positive	Trading	Negative	Hold	605	585	575	615	635	565
UNTR	Negative	Overbought	Negative	Strong Sell	25,300	24,700	24,050	25,950	26,550	23,675
UNVR	Positive	Trading	Negative	Hold	1,710	1,680	1,665	1,725	1,755	1,640



Kiwoom Research Team



HEAD OFFICE

Treasury Tower 27th Floor Unit A, District 8 Kawasan SCBD Lot 28,
Jl.Jend.Sudirman Kav 52-53, Jakarta Selatan 12190

Tel : (021) 5010 5800
Fax : (021) 5010 5820
Email : cs@kiwoom.co.id

PT Kiwoom Sekuritas Indonesia is licensed and supervised by the Financial Services Authority (OJK)

OTHER DISCLOSURES

All Kiwoom's research reports made available to clients are simultaneously available on our own website <http://www.kiwoom.co.id/>. Not all research content is redistributed, e-mailed or made available to third-party aggregators. For all research reports available on a particular stock, please contact your sales representative. Any data discrepancies in this report could be the result of different calculations and/or adjustments.

DISCLAIMER

This report has been prepared and issued by PT Kiwoom Sekuritas Indonesia. Information has been obtained from sources believed to be reliable but Kiwoom Securities do not warrant its completeness or accuracy. Forward-looking information or statements in this report contain information that is based on forecast of future results, estimates of amounts not yet determinable, assumptions, and therefore involve known and unknown risks and uncertainties which may cause the actual results, performance or achievements of their subject matter to be materially different from current expectations. To the fullest extent allowed by law, PT Kiwoom Sekuritas Indonesia shall not be liable for any direct, indirect or consequential losses, loss of profits, damages, costs or expenses incurred or suffered by any person or organization arising from reliance on or use of any information contained on this report. The information that we provide should not be construed in any manner whatsoever as, personalized advice. No mention of a particular security in this report constitutes a recommendation to buy, sell or hold that or any security, or that any particular security, portfolio of securities, transaction or investment strategy is suitable for any specific person. This report is being supplied to you solely for your information and may not be reproduced by, further distributed to or published in whole or in part by, any other person.