



# Technical Recommendation

Jakarta Composite Index Range Today

**8,000 / 7,900 – 7,850 Close GAP 8,088 / 8,300 – 8,400**

Support

Resistance

Published on 23 September 2025



## **Jakarta Composite Index**

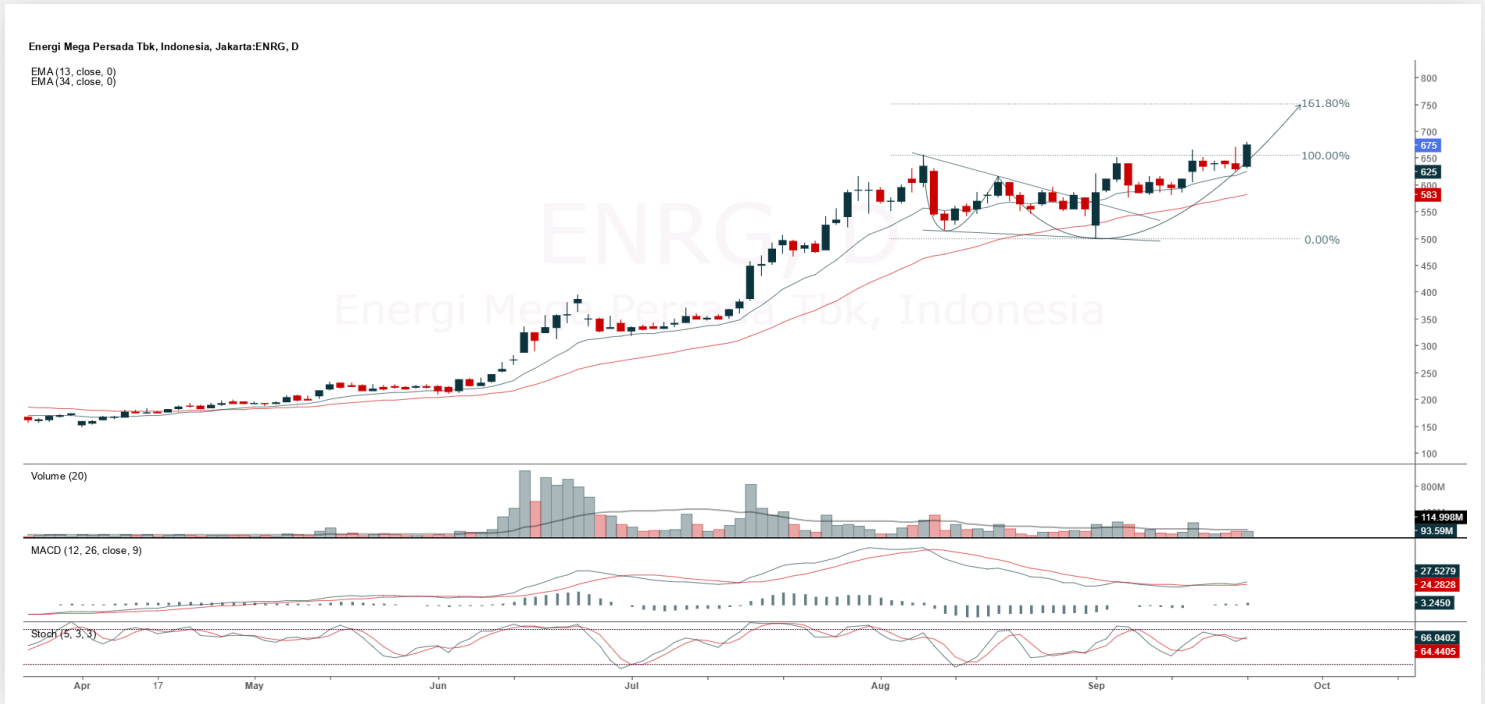
JCI had to correct minor by 11.08pts / -0.14%, still safely maintained above the psychological level of 8,000 at the closing figure of 8,040.04. **KIWOOM RESEARCH** still categorizes yesterday's candle as similar to a Dark Cloud, therefore the indication of a continued pullback to test Support 8,000 is still looming, unless JCI instead rockets back above 8,088. Investors/traders are advised to closely monitor the Trailing Stop level to prevent portfolios & floating gains from being dragged by selling pressure (if any).

**ADVISE:** WAIT & SEE; Set your TRAILING STOP.



## ENRG

Energi Mega Persada Tbk.



**(ENRG).** Price rallies again and potential to continue uptrend. Price is supported by stochastic indicator returning golden cross and MACD line returning golden cross (Histogram moving positive) as well as increasing volume.

**ADVICE:** Averaging up or trading buy.

Entry Buy	Target Price	Support	Cut Loss
650 – 675	705 – 730	640 – 650	630



## INCO

Vale Indonesia Tbk.



**(INCO).** Price forms swing low again and potential to continue uptrend. Price is supported by stochastic indicator returning golden cross and MACD line moving bullish (Histogram moving positive) as well as increasing volume.

**ADVICE:** Averaging up or trading buy.

Entry Buy	Target Price	Support	Cut Loss
4,050 – 4,190	4,360 – 4,530	3,970 – 4,050	3,950



## MBMA

Merdeka Battery Materials Tbk.



**(MBMA).** Price rallies again and potential to continue uptrend. Price is supported by stochastic indicator potential to return golden cross and MACD line moving bullish (Histogram moving positive) as well as increasing volume.

**ADVICE:** Averaging up or trading buy.

Entry Buy	Target Price	Support	Cut Loss
492 – 510	535 – 555	482 – 492	478



## TINS

Timah Tbk.



**(TINS).** Price breaks out resistance again and potential to continue uptrend. Price is supported by stochastic indicator potential to return golden cross and MACD line moving bullish (Histogram moving positive) as well as increasing volume.

**ADVICE:** Averaging up or trading buy.

Entry Buy	Target Price	Support	Cut Loss
1,115 – 1,155	1,205 – 1,250	1,095 – 1,115	1,085

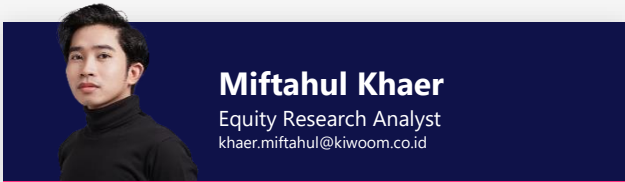


## Forecast – Technical Analysis

Ticker	MA5	RSI Rec	MACD Trend	Recomm.	Pivot Point	Support 1	Support 2	Resistance 1	Resistance 2	Stop Loss Level
JCI	Negative	Overbought	Positive	Sell	8,050	8,025	7,975	8,100	8,125	7,850
AADI	Negative	Trading	Negative	Sell	7,050	7,000	6,925	7,125	7,175	6,825
ACES	Positive	Oversold	Positive	Buy	429	423	417	435	441	410
ADMIR	Positive	Trading	Positive	Spec. Buy	995	990	980	1,005	1,010	965
ADRO	Positive	Oversold	Negative	Spec. Buy	1,665	1,645	1,630	1,680	1,700	1,605
AKRA	Negative	Trading	Positive	Hold	1,210	1,195	1,175	1,230	1,245	1,160
AMMN	Positive	Oversold	Negative	Spec. Buy	7,400	7,025	6,625	7,800	8,175	6,525
AMRT	Positive	Oversold	Negative	Spec. Buy	1,960	1,905	1,855	2,010	2,065	1,825
ANTM	Negative	Overbought	Positive	Sell	3,545	3,510	3,465	3,590	3,625	3,415
ARTO	Negative	Trading	Negative	Sell	2,185	2,130	2,075	2,240	2,295	2,045
ASII	Negative	Overbought	Negative	Strong Sell	5,700	5,675	5,600	5,775	5,800	5,500
BBCA	Positive	Oversold	Negative	Spec. Buy	7,775	7,725	7,675	7,825	7,875	7,550
BBNI	Positive	Trading	Negative	Hold	4,235	4,185	4,125	4,295	4,345	4,060
BBRI	Negative	Trading	Positive	Hold	4,195	4,135	4,055	4,275	4,335	3,990
BBTN	Positive	Trading	Negative	Hold	1,325	1,305	1,285	1,345	1,365	1,265
BMRI	Positive	Trading	Negative	Hold	4,405	4,385	4,345	4,445	4,465	4,275
BRIS	Positive	Trading	Negative	Hold	2,615	2,595	2,575	2,635	2,655	2,535
BRPT	Negative	Strong Sell	Positive	Sell	3,145	3,010	2,895	3,260	3,395	2,850
CPIN	Negative	Trading	Positive	Hold	4,890	4,750	4,615	5,025	5,175	4,545
CTRA	Positive	Oversold	Negative	Spec. Buy	930	910	895	945	965	880
EXCL	Negative	Trading	Positive	Hold	2,750	2,695	2,610	2,835	2,890	2,570
GOTO	Positive	Oversold	Negative	Spec. Buy	55	54	54	55	56	53
ICBP	Negative	Trading	Positive	Hold	9,675	9,500	9,350	9,825	10,000	9,200
INCO	Positive	Overbought	Positive	Hold	4,125	4,020	3,925	4,220	4,325	3,865
INDF	Negative	Trading	Positive	Hold	7,825	7,800	7,725	7,900	7,925	7,600
INKP	Positive	Trading	Negative	Hold	7,350	7,225	7,125	7,450	7,575	7,025
ISAT	Positive	Oversold	Positive	Buy	1,875	1,855	1,820	1,910	1,930	1,795
ITMG	Negative	Overbought	Positive	Sell	23,075	22,925	22,725	23,275	23,425	22,375
JPFA	Negative	Overbought	Positive	Sell	2,015	1,940	1,855	2,100	2,175	1,825
JSMR	Negative	Trading	Positive	Hold	3,480	3,455	3,430	3,505	3,530	3,375
KLBF	Negative	Oversold	Positive	Spec. Buy	1,180	1,170	1,155	1,195	1,205	1,135
MAPA	Positive	Oversold	Negative	Spec. Buy	545	535	515	565	575	510
MAPI	Negative	Trading	Positive	Hold	1,185	1,165	1,145	1,205	1,225	1,130
MBMA	Positive	Overbought	Positive	Hold	493	476	459	510	525	452
MDKA	Positive	Trading	Negative	Hold	2,480	2,430	2,380	2,530	2,580	2,345
MEDC	Negative	Overbought	Positive	Sell	1,305	1,295	1,275	1,325	1,335	1,255
PGAS	Positive	Trading	Negative	Hold	1,735	1,715	1,690	1,760	1,780	1,665
PGEO	Positive	Oversold	Negative	Spec. Buy	1,330	1,315	1,295	1,350	1,365	1,275
PTBA	Positive	Trading	Negative	Hold	2,375	2,360	2,345	2,390	2,405	2,310
SCMA	Negative	Overbought	Negative	Strong Sell	339	329	317	351	361	312
SMGR	Negative	Overbought	Positive	Sell	2,920	2,865	2,840	2,945	3,000	2,795
SMRA	Positive	Trading	Negative	Hold	436	428	422	442	450	416
TLKM	Negative	Trading	Positive	Hold	3,255	3,205	3,145	3,315	3,365	3,095
TOWR	Negative	Trading	Positive	Hold	615	595	585	625	645	575
UNTR	Negative	Overbought	Negative	Strong Sell	26,800	26,650	26,375	27,075	27,225	25,975
UNVR	Negative	Trading	Negative	Sell	1,720	1,710	1,700	1,730	1,740	1,675



## Kiwoom Research Team



### HEAD OFFICE

Treasury Tower 27th Floor Unit A, District 8 Kawasan SCBD Lot 28,  
Jl.Jend.Sudirman Kav 52-53, Jakarta Selatan 12190

Tel : (021) 5010 5800  
Fax : (021) 5010 5820  
Email : [cs@kiwoom.co.id](mailto:cs@kiwoom.co.id)

PT Kiwoom Sekuritas Indonesia is licensed and supervised by the Financial Services Authority (OJK)

### OTHER DISCLOSURES

All Kiwoom's research reports made available to clients are simultaneously available on our own website <http://www.kiwoom.co.id/>. Not all research content is redistributed, e-mailed or made available to third-party aggregators. For all research reports available on a particular stock, please contact your sales representative. Any data discrepancies in this report could be the result of different calculations and/or adjustments.

### DISCLAIMER

This report has been prepared and issued by PT Kiwoom Sekuritas Indonesia. Information has been obtained from sources believed to be reliable but Kiwoom Securities do not warrant its completeness or accuracy. Forward-looking information or statements in this report contain information that is based on forecast of future results, estimates of amounts not yet determinable, assumptions, and therefore involve known and unknown risks and uncertainties which may cause the actual results, performance or achievements of their subject matter to be materially different from current expectations. To the fullest extent allowed by law, PT Kiwoom Sekuritas Indonesia shall not be liable for any direct, indirect or consequential losses, loss of profits, damages, costs or expenses incurred or suffered by any person or organization arising from reliance on or use of any information contained on this report. The information that we provide should not be construed in any manner whatsoever as, personalized advice. No mention of a particular security in this report constitutes a recommendation to buy, sell or hold that or any security, or that any particular security, portfolio of securities, transaction or investment strategy is suitable for any specific person. This report is being supplied to you solely for your information and may not be reproduced by, further distributed to or published in whole or in part by, any other person.