



Jakarta Composite Index Range Today

8,040 – 8,000 / 7,900
Support

8,150 – 8,170 / 8,350 – 8,400
Resistance

Published on 29 September 2025



Jakarta Composite Index

JCI closed higher by 58.67pts / +0.73% at the level of 8,099.33, salvaging the weekly position into positive territory with a gain of 0.21%. Technically, JCI clearly maintains its upward trend based on MA10, making 8,040 the nearest Support level at present.

KIWOOM RESEARCH expects the rise could still continue today, but investors/traders need to closely monitor the ATH Resistance at 8,150 – 8,170 before doing an Average Up.

ADVISE: WAIT & SEE; AVERAGE UP accordingly.



ARTO

Bank Jago Tbk.



(ARTO). Price formed another swing low. Price is supported by stochastic golden cross and MACD line starting to flatten as well as increasing volume trend.

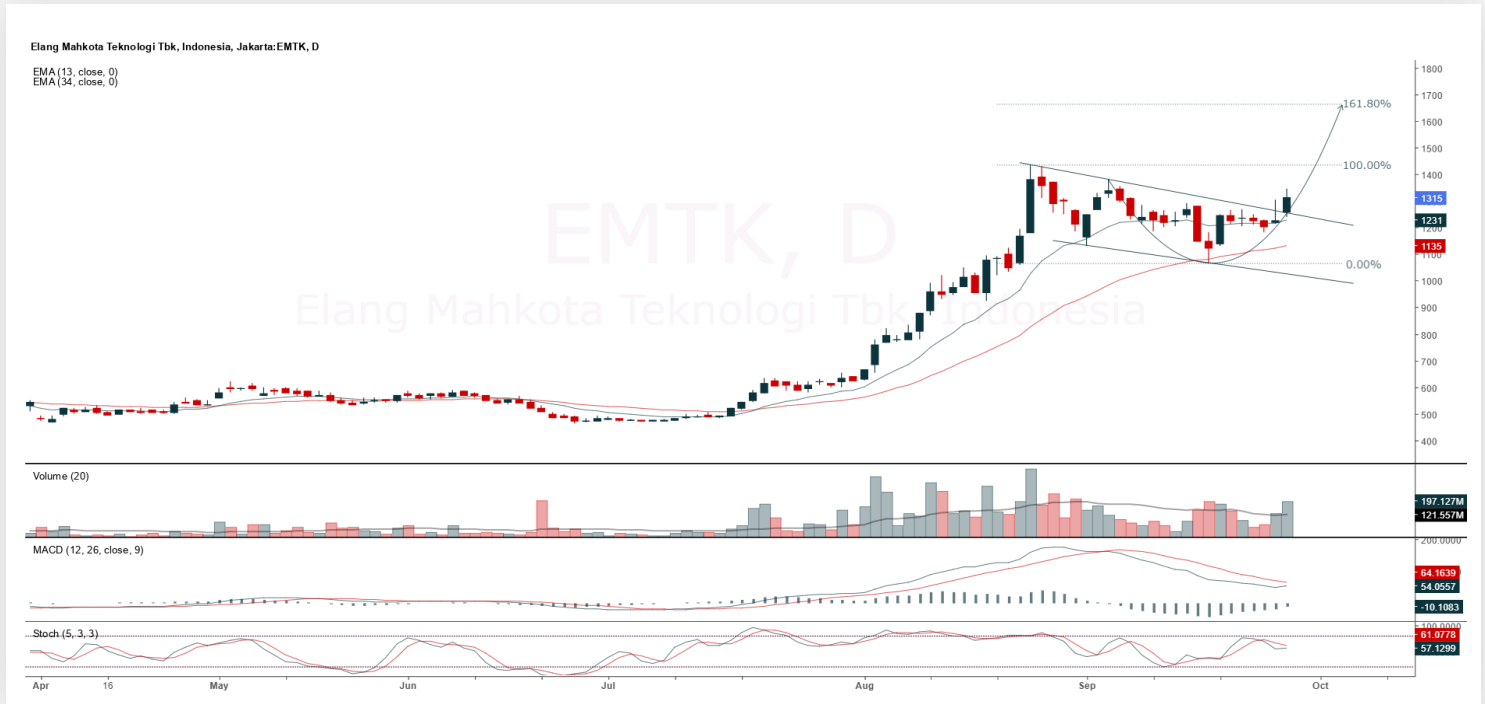
ADVICE: Accumulate buy or trading buy.

Entry Buy	Target Price	Support	Cut Loss
2,090 – 2,150	2,230 – 2,310	2,050 – 2,090	2,030



EMTK

Elang Mahkota Teknologi Tbk.



(EMTK). Price rallied again with potential to continue uptrend. Price is supported by stochastic potential golden cross and MACD line potential golden cross (Histogram moving in positive direction) along with increasing volume trend.

ADVICE: Averaging up or trading buy.

Entry Buy	Target Price	Support	Cut Loss
1,270 – 1,315	1,370 – 1,425	1,245 – 1,270	1,235



HMSP

H.M. Sampoerna Tbk.



(HMSP). Price rallied again with potential to continue uptrend. Price is supported by stochastic potential golden cross and MACD line moving bullish (Histogram still moving positive) along with increasing volume.

ADVICE: Averaging up or trading buy.

Entry Buy	Target Price	Support	Cut Loss
845 – 875	910 – 945	830 – 845	820



LSIP

PP London Sumatra Indonesia Tbk.



(LSIP). Price is testing nearest resistance. Price is supported by stochastic golden cross again and MACD line golden cross again (Histogram moving positive) as well as increasing volume.

ADVICE: Accumulate buy or trading buy.

Entry Buy	Target Price	Support	Cut Loss
1,310 – 1,355	1,410 – 1,465	1,285 – 1,310	1,275

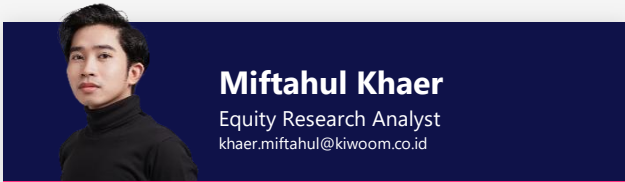
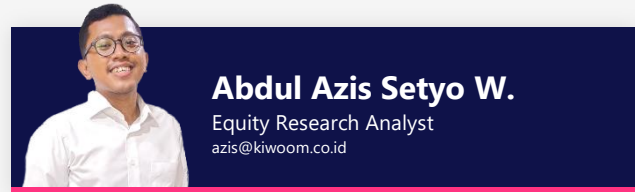


Forecast – Technical Analysis

Ticker	MA5	RSI Rec	MACD Trend	Recomm.	Pivot Point	Support		Resistance		Stop Loss Level
						1	2	1	2	
JCI	Negative	Overbought	Positive	Sell	8,075	8,050	8,000	8,100	8,125	7,875
AADI	Negative	Overbought	Positive	Sell	7,625	7,525	7,425	7,725	7,825	7,325
ACES	Positive	Trading	Positive	Spec. Buy	427	420	415	432	439	409
ADMIR	Negative	Trading	Positive	Hold	1,015	1,005	995	1,025	1,035	980
ADRO	Negative	Trading	Positive	Hold	1,705	1,685	1,675	1,715	1,735	1,645
AKRA	Positive	Trading	Positive	Spec. Buy	1,225	1,220	1,195	1,250	1,255	1,180
AMMN	Positive	Oversold	Negative	Spec. Buy	6,925	6,750	6,575	7,100	7,275	6,475
AMRT	Positive	Oversold	Negative	Spec. Buy	1,875	1,840	1,815	1,900	1,935	1,790
ANTM	Positive	Trading	Negative	Hold	3,180	3,140	3,070	3,250	3,290	3,025
ARTO	Positive	Trading	Negative	Hold	2,115	2,050	1,985	2,180	2,245	1,955
ASII	Negative	Overbought	Positive	Sell	5,875	5,775	5,650	6,000	6,100	5,575
BBCA	Positive	Oversold	Positive	Buy	7,625	7,550	7,500	7,675	7,750	7,375
BBNI	Positive	Trading	Negative	Hold	4,155	4,130	4,085	4,200	4,225	4,025
BBRI	Positive	Trading	Negative	Hold	4,045	4,005	3,965	4,085	4,125	3,905
BBTN	Positive	Trading	Negative	Hold	1,290	1,275	1,260	1,305	1,320	1,240
BMRI	Negative	Trading	Negative	Sell	4,390	4,345	4,310	4,425	4,470	4,245
BRIS	Negative	Trading	Positive	Hold	2,660	2,640	2,600	2,700	2,720	2,560
BRPT	Negative	Overbought	Positive	Sell	3,585	3,480	3,355	3,710	3,815	3,305
CPIN	Positive	Trading	Positive	Spec. Buy	4,835	4,765	4,695	4,905	4,975	4,620
CTRA	Negative	Trading	Negative	Sell	940	930	920	950	960	905
EXCL	Positive	Trading	Negative	Hold	2,725	2,660	2,625	2,760	2,825	2,585
GOTO	Negative	Trading	Positive	Hold	56	55	54	57	58	53
ICBP	Negative	Overbought	Positive	Sell	9,875	9,725	9,500	10,100	10,250	9,375
INCO	Negative	Overbought	Positive	Sell	4,250	4,200	4,120	4,330	4,380	4,060
INDF	Positive	Trading	Positive	Spec. Buy	7,725	7,650	7,550	7,825	7,900	7,450
INKP	Negative	Trading	Negative	Sell	7,625	7,450	7,225	7,850	8,025	7,125
ISAT	Positive	Oversold	Negative	Spec. Buy	1,750	1,700	1,640	1,810	1,860	1,615
ITMG	Positive	Trading	Positive	Spec. Buy	22,725	22,650	22,600	22,775	22,850	22,250
JPFA	Positive	Overbought	Positive	Hold	2,045	2,030	2,005	2,070	2,085	1,975
JSMR	Negative	Trading	Positive	Hold	3,545	3,530	3,505	3,570	3,585	3,450
KLBF	Positive	Oversold	Positive	Buy	1,160	1,140	1,130	1,170	1,190	1,110
MAPA	Positive	Oversold	Negative	Spec. Buy	525	515	500	540	550	493
MAPI	Positive	Oversold	Negative	Spec. Buy	1,135	1,130	1,120	1,145	1,150	1,100
MBMA	Negative	Overbought	Positive	Sell	520	457	393	585	645	387
MDKA	Positive	Trading	Negative	Hold	2,135	2,025	1,905	2,255	2,365	1,875
MEDC	Negative	Overbought	Positive	Sell	1,335	1,315	1,270	1,380	1,400	1,250
PGAS	Positive	Trading	Negative	Hold	1,715	1,700	1,685	1,730	1,745	1,660
PGEO	Negative	Trading	Positive	Hold	1,345	1,315	1,295	1,365	1,395	1,275
PTBA	Positive	Oversold	Negative	Spec. Buy	2,350	2,335	2,320	2,365	2,380	2,285
SCMA	Negative	Overbought	Positive	Sell	354	342	334	362	374	329
SMGR	Negative	Trading	Negative	Sell	2,860	2,800	2,760	2,900	2,960	2,720
SMRA	Negative	Trading	Negative	Sell	436	432	428	440	444	422
TLKM	Positive	Trading	Negative	Hold	3,115	3,070	3,045	3,140	3,185	3,000
TOWR	Positive	Trading	Negative	Hold	590	580	575	595	605	565
UNTR	Positive	Trading	Negative	Hold	26,550	26,275	26,050	26,775	27,050	25,650
UNVR	Negative	Overbought	Positive	Sell	1,830	1,725	1,665	1,890	1,995	1,640



Kiwoom Research Team



HEAD OFFICE

Treasury Tower 27th Floor Unit A, District 8 Kawasan SCBD Lot 28,
Jl.Jend.Sudirman Kav 52-53, Jakarta Selatan 12190

Tel : (021) 5010 5800

Fax : (021) 5010 5820

Email : cs@kiwoom.co.id

PT Kiwoom Sekuritas Indonesia is licensed and supervised by the Financial Services Authority (OJK)

OTHER DISCLOSURES

All Kiwoom's research reports made available to clients are simultaneously available on our own website <http://www.kiwoom.co.id/>. Not all research content is redistributed, e-mailed or made available to third-party aggregators. For all research reports available on a particular stock, please contact your sales representative. Any data discrepancies in this report could be the result of different calculations and/or adjustments.

DISCLAIMER

This report has been prepared and issued by PT Kiwoom Sekuritas Indonesia. Information has been obtained from sources believed to be reliable but Kiwoom Securities do not warrant its completeness or accuracy. Forward-looking information or statements in this report contain information that is based on forecast of future results, estimates of amounts not yet determinable, assumptions, and therefore involve known and unknown risks and uncertainties which may cause the actual results, performance or achievements of their subject matter to be materially different from current expectations. To the fullest extent allowed by law, PT Kiwoom Sekuritas Indonesia shall not be liable for any direct, indirect or consequential losses, loss of profits, damages, costs or expenses incurred or suffered by any person or organization arising from reliance on or use of any information contained on this report. The information that we provide should not be construed in any manner whatsoever as, personalized advice. No mention of a particular security in this report constitutes a recommendation to buy, sell or hold that or any security, or that any particular security, portfolio of securities, transaction or investment strategy is suitable for any specific person. This report is being supplied to you solely for your information and may not be reproduced by, further distributed to or published in whole or in part by, any other person.