



Jakarta Composite Index Range Today

8,085 / 8,020 – 8,000 **8,150 – 8,170 / 8,230 / 8,500 – 8,600**
Support Resistance

Published on 06 October 2025



Jakarta Composite Index

On Friday's trading, JCI ended last week with a gain of 47.22 pts / +0.59% to the level of 8,118.30, reclaiming its position above the MA10, thus making the 8,085 level the nearest Support for today.

So far, **KIWOOM RESEARCH** sees the threat of this Sideways trend turning bearish seems to be fading. The uptrend of JCI remains safely under control within the larger Uptrend RISING WEDGE pattern. The task today is to break through the ATH Resistance at 8,150 – 8,170 if it wants to continue this bullish move toward the next TARGET: 8,230. **Suggested strategy: Average Up accordingly on your portfolio.**

ADVISE: AVERAGE UP accordingly.



CPIN

Charoen Pokphand Indonesia Tbk.



(CPIN). Price has formed another swing low. Price is supported by a stochastic golden cross, MACD line potential golden cross (Histogram moving in a positive direction) and increasing volume.

ADVICE: Accumulate buy or trading buy.

Entry Buy	Target Price	Support	Cut Loss
4,680 – 4,840	5,050 – 5,250	4,580 – 4,680	4,560



EXCL

XLSMART Telecom Sejahtera Tbk.



(EXCL). Price made a false breakdown at support and formed a bullish engulfing candle. Price is supported by a stochastic potential golden cross and MACD line potential golden cross (Histogram moving in a positive direction).

ADVICE: Accumulate buy or trading buy.

Entry Buy	Target Price	Support	Cut Loss
2,540 – 2,630	2,740 – 2,850	2,490 – 2,540	2,470



PTRO

Petrosea Tbk.



(PTRO). Price has formed another swing low and is rallying again. Price is supported by a stochastic golden cross, MACD line still moving bullish (Histogram moving positive) and increasing volume.

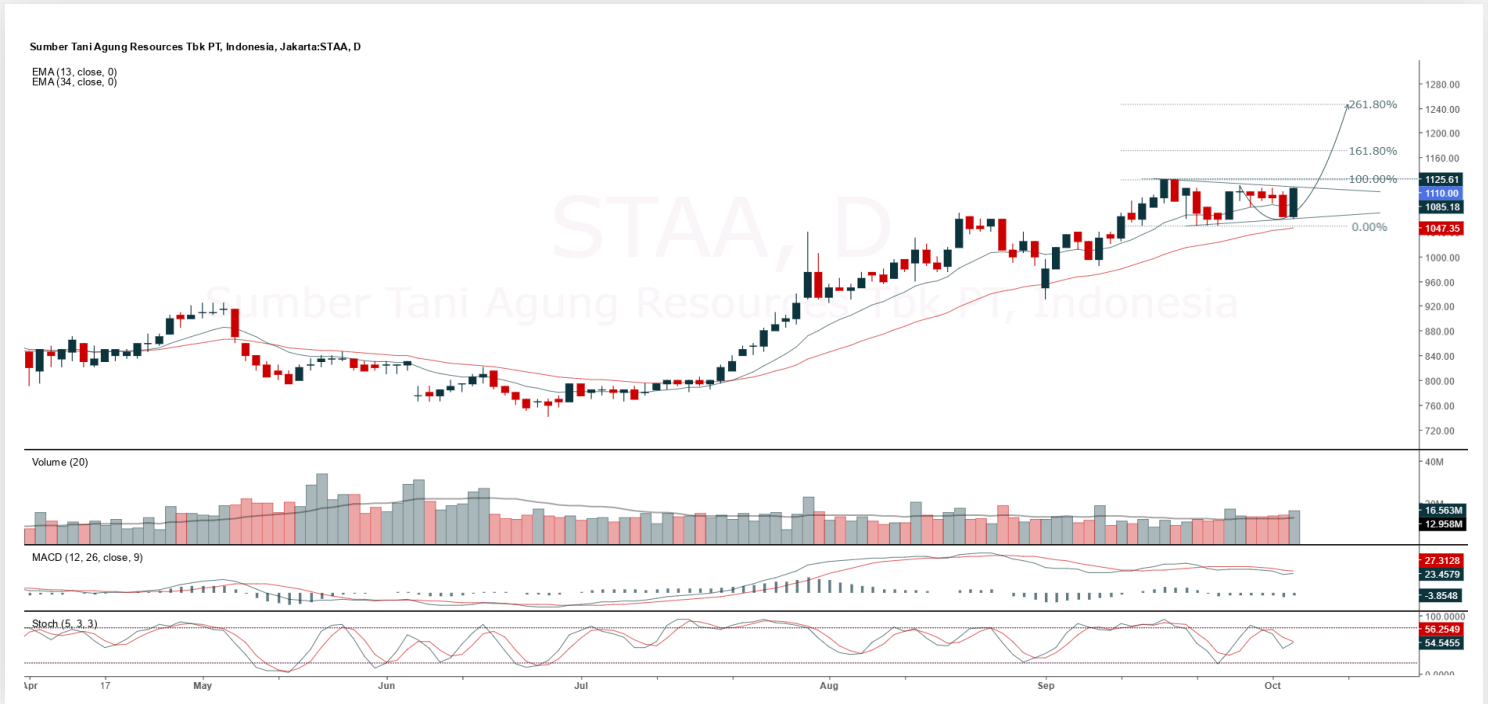
ADVICE: Trading buy.

Entry Buy	Target Price	Support	Cut Loss
6,900 – 7,150	7,450 – 7,750	6,775 – 6,900	6,725



STAA

Sumber Tani Agung Resources Tbk.



(STAA). Price has formed another swing low. Price is supported by a stochastic potential golden cross, MACD line potential golden cross (Histogram moving in a positive direction) and increasing volume.

ADVICE: Averaging up or trading buy.

Entry Buy	Target Price	Support	Cut Loss
1,070 – 1,110	1,155 – 1,205	1,050 – 1,070	1,040



Forecast – Technical Analysis

Ticker	MA5	RSI Rec	MACD Trend	Recomm.	Pivot Point	Support 1	Support 2	Resistance 1	Resistance 2	Stop Loss Level
JCI	Positive	Overbought	Negative	Sell	8,100	8,100	8,050	8,125	8,150	7,950
AADI	Positive	Trading	Positive	Spec. Buy	7,550	7,425	7,300	7,675	7,800	7,200
ACES	Positive	Trading	Positive	Spec. Buy	428	422	418	432	438	412
ADMIR	Negative	Overbought	Positive	Sell	1,090	1,075	1,050	1,115	1,130	1,035
ADRO	Positive	Trading	Positive	Spec. Buy	1,665	1,650	1,635	1,680	1,695	1,610
AKRA	Positive	Oversold	Negative	Spec. Buy	1,130	1,110	1,095	1,145	1,165	1,075
AMMN	Positive	Oversold	Negative	Spec. Buy	6,875	6,800	6,700	6,975	7,050	6,600
AMRT	Negative	Trading	Positive	Hold	1,960	1,940	1,900	2,000	2,020	1,870
ANTM	Positive	Trading	Negative	Hold	3,165	3,105	3,055	3,215	3,275	3,005
ARTO	Negative	Trading	Negative	Sell	2,160	2,120	2,020	2,260	2,300	1,990
ASII	Positive	Trading	Negative	Hold	5,800	5,750	5,700	5,850	5,900	5,600
BBCA	Positive	Oversold	Negative	Spec. Buy	7,525	7,500	7,475	7,550	7,575	7,375
BBNI	Positive	Oversold	Negative	Spec. Buy	4,050	4,015	3,980	4,085	4,120	3,920
BBRI	Positive	Oversold	Negative	Spec. Buy	3,710	3,665	3,640	3,735	3,780	3,585
BBTN	Positive	Trading	Negative	Hold	1,235	1,215	1,185	1,265	1,285	1,170
BMRI	Positive	Oversold	Positive	Buy	4,340	4,300	4,260	4,380	4,420	4,195
BRIS	Positive	Trading	Negative	Hold	2,605	2,595	2,585	2,615	2,625	2,545
BRPT	Negative	Overbought	Positive	Sell	3,860	3,815	3,760	3,915	3,960	3,700
CPIN	Positive	Trading	Negative	Hold	4,765	4,675	4,595	4,845	4,935	4,525
CTRA	Positive	Oversold	Negative	Spec. Buy	895	880	870	905	920	855
EXCL	Positive	Trading	Negative	Hold	2,570	2,485	2,410	2,645	2,730	2,370
GOTO	Positive	Trading	Positive	Spec. Buy	56	54	52	58	60	51
ICBP	Positive	Trading	Positive	Spec. Buy	9,525	9,450	9,350	9,625	9,700	9,200
INCO	Negative	Overbought	Positive	Sell	4,380	4,320	4,250	4,450	4,510	4,185
INDF	Positive	Oversold	Negative	Spec. Buy	7,100	7,025	6,950	7,175	7,250	6,850
INKP	Positive	Trading	Negative	Hold	7,450	7,325	7,150	7,625	7,750	7,050
ISAT	Negative	Oversold	Negative	Spec. Buy	1,700	1,675	1,655	1,720	1,745	1,630
ITMG	Positive	Trading	Negative	Hold	22,625	22,550	22,450	22,725	22,800	22,125
JPFA	Positive	Overbought	Positive	Hold	2,085	2,060	2,005	2,140	2,165	1,975
JSMR	Negative	Overbought	Positive	Sell	3,700	3,450	3,200	3,950	4,200	3,150
KLBF	Positive	Oversold	Negative	Spec. Buy	1,095	1,070	1,055	1,110	1,135	1,035
MAPA	Negative	Trading	Positive	Hold	545	540	530	555	560	520
MAPI	Negative	Trading	Negative	Sell	1,155	1,140	1,120	1,175	1,190	1,105
MBMA	Negative	Overbought	Positive	Sell	635	620	595	660	675	585
MDKA	Positive	Oversold	Negative	Spec. Buy	2,125	2,105	2,085	2,145	2,165	2,050
MEDC	Negative	Overbought	Positive	Sell	1,485	1,375	1,305	1,555	1,665	1,285
PGAS	Positive	Oversold	Negative	Spec. Buy	1,630	1,590	1,565	1,655	1,695	1,540
PGEO	Negative	Trading	Positive	Hold	1,385	1,350	1,320	1,415	1,450	1,300
PTBA	Positive	Oversold	Negative	Spec. Buy	2,315	2,300	2,285	2,330	2,345	2,250
SCMA	Negative	Overbought	Positive	Sell	397	387	377	407	417	371
SMGR	Positive	Trading	Negative	Hold	2,720	2,700	2,670	2,750	2,770	2,630
SMRA	Positive	Trading	Negative	Hold	423	420	417	426	429	411
TLKM	Positive	Trading	Negative	Hold	3,090	3,050	3,010	3,130	3,170	2,965
TOWR	Positive	Oversold	Negative	Spec. Buy	545	525	505	565	585	497
UNTR	Negative	Trading	Negative	Sell	26,425	25,975	25,700	26,700	27,150	25,300
UNVR	Positive	Overbought	Positive	Hold	1,820	1,770	1,730	1,860	1,910	1,705



Kiwoom Research Team



HEAD OFFICE

Treasury Tower 27th Floor Unit A, District 8 Kawasan SCBD Lot 28,
Jl.Jend.Sudirman Kav 52-53, Jakarta Selatan 12190

Tel : (021) 5010 5800
Fax : (021) 5010 5820
Email : cs@kiwoom.co.id

PT Kiwoom Sekuritas Indonesia is licensed and supervised by the Financial Services Authority (OJK)

OTHER DISCLOSURES

All Kiwoom's research reports made available to clients are simultaneously available on our own website <http://www.kiwoom.co.id/>. Not all research content is redistributed, e-mailed or made available to third-party aggregators. For all research reports available on a particular stock, please contact your sales representative. Any data discrepancies in this report could be the result of different calculations and/or adjustments.

DISCLAIMER

This report has been prepared and issued by PT Kiwoom Sekuritas Indonesia. Information has been obtained from sources believed to be reliable but Kiwoom Securities do not warrant its completeness or accuracy. Forward-looking information or statements in this report contain information that is based on forecast of future results, estimates of amounts not yet determinable, assumptions, and therefore involve known and unknown risks and uncertainties which may cause the actual results, performance or achievements of their subject matter to be materially different from current expectations. To the fullest extent allowed by law, PT Kiwoom Sekuritas Indonesia shall not be liable for any direct, indirect or consequential losses, loss of profits, damages, costs or expenses incurred or suffered by any person or organization arising from reliance on or use of any information contained on this report. The information that we provide should not be construed in any manner whatsoever as, personalized advice. No mention of a particular security in this report constitutes a recommendation to buy, sell or hold that or any security, or that any particular security, portfolio of securities, transaction or investment strategy is suitable for any specific person. This report is being supplied to you solely for your information and may not be reproduced by, further distributed to or published in whole or in part by, any other person.