



Technical Recommendation

Jakarta Composite Index Range Today

8,140 – 8,120 / 8,000 – 7,985 8,260 – 8,288

Support

Resistance

Published on 23 October 2025



Jakarta Composite Index

JCI fell, eroded by 85.53pts / -1.04% to the level of 8,152.55, which makes this JCI closing return to a critical position that will determine: whether this is just a Support test, or has the potential to break through MA10 & MA20, which have been hard to climb above 8,120 – 8,140 as the nearest cushion at the moment. **KIWOOM RESEARCH** recommends waiting for JCI to surpass 8,260 before adding more purchase positions.

ADVISE: WAIT & SEE, Average Up on break out.



ACES

Aspirasi Hidup Indonesia Tbk.



(ACES). Price strengthened significantly with potential to transition back to an uptrend. Price is supported by stochastic golden cross indicator, bullish MACD line (histogram moving positive) and significantly increasing volume.

ADVICE: Accumulate buy or trading buy.

Entry Buy	Target Price	Support	Cut Loss
430 – 444	462 – 480	422 – 430	418



CPIN

Charoen Pokphand Indonesia Tbk.



(CPIN). Price successfully broke resistance with potential to continue uptrend. Price is supported by bullish MACD line (histogram moving positive) and significantly increasing volume.

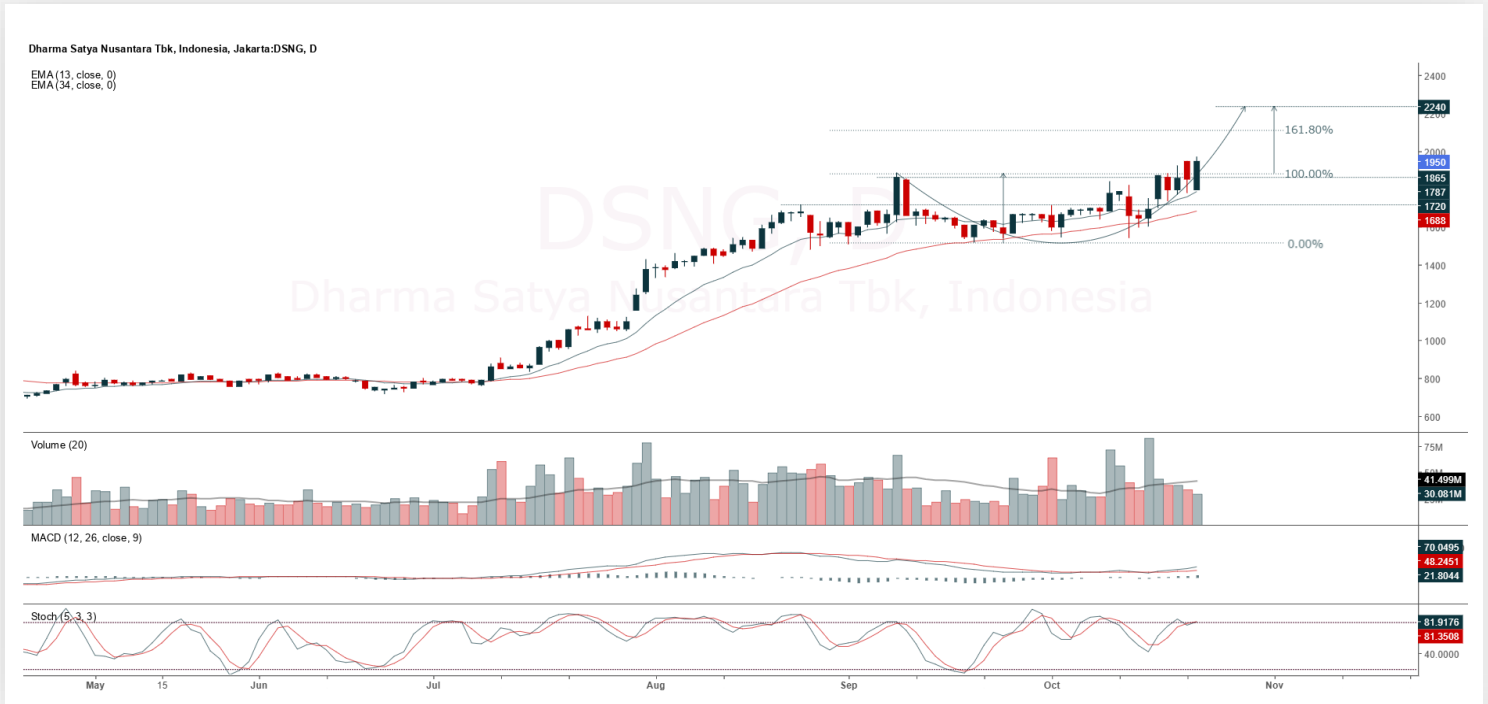
ADVICE: Averaging up or trading buy.

Entry Buy	Target Price	Support	Cut Loss
5,000 – 5,175	5,400 – 5,600	4,910 – 5,000	4,890



DSNG

Dharma Satya Nusantara Tbk.



(DSNG). Price continues to rally with potential to continue uptrend. Price is supported by stochastic golden cross and bullish MACD line (histogram moving positive).

ADVICE: Averaging up or trading buy.

Entry Buy	Target Price	Support	Cut Loss
1,885 – 1,950	2,030 – 2,110	1,850 – 1,885	1,840



PTRO

Petrosea Tbk.



(PTRO). Price breakout pattern with potential to continue uptrend. Price is supported by stochastic golden cross, MACD line potential golden cross (histogram moving towards positive) and significantly increasing volume.

ADVICE: Averaging up or trading buy.

Entry Buy	Target Price	Support	Cut Loss
7,250 – 7,500	7,800 – 8,100	7,100 – 7,250	7,050

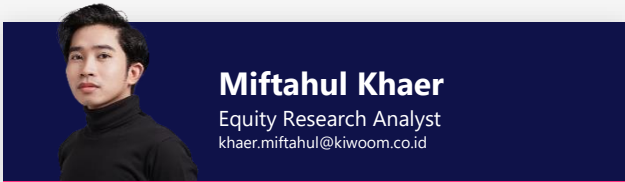


Forecast – Technical Analysis

Ticker	MA5	RSI Rec	MACD Trend	Recomm.	Pivot Point	Support 1	Support 2	Resistance 1	Resistance 2	Stop Loss Level
JCI	Negative	Trading	Negative	Sell	8,200	8,125	8,075	8,250	8,325	7,950
AADI	Negative	Trading	Positive	Hold	8,000	7,950	7,875	8,075	8,125	7,750
ACES	Positive	Trading	Positive	Spec. Buy	440	421	408	453	472	401
ADMIR	Negative	Trading	Positive	Hold	1,330	1,300	1,270	1,360	1,390	1,250
ADRO	Negative	Trading	Positive	Hold	1,790	1,760	1,725	1,825	1,855	1,700
AKRA	Negative	Trading	Positive	Hold	1,120	1,090	1,070	1,140	1,170	1,050
AMMN	Negative	Trading	Positive	Hold	7,400	7,225	7,075	7,550	7,725	6,975
AMRT	Positive	Trading	Positive	Spec. Buy	2,205	2,175	2,155	2,225	2,255	2,120
ANTM	Positive	Trading	Negative	Hold	3,170	3,105	3,060	3,215	3,280	3,010
ARTO	Positive	Trading	Negative	Hold	2,025	1,990	1,960	2,055	2,090	1,930
ASII	Negative	Overbought	Positive	Sell	6,125	5,975	5,825	6,275	6,425	5,750
BBCA	Negative	Overbought	Positive	Sell	8,450	8,200	7,950	8,700	8,950	7,825
BBNI	Negative	Trading	Positive	Hold	4,065	3,975	3,915	4,125	4,215	3,855
BBRI	Negative	Trading	Positive	Hold	3,750	3,675	3,610	3,815	3,890	3,555
BBTN	Negative	Trading	Positive	Hold	1,205	1,155	1,110	1,250	1,300	1,095
BMRI	Negative	Trading	Positive	Hold	4,360	4,255	4,190	4,425	4,530	4,125
BRIS	Negative	Trading	Positive	Hold	2,655	2,590	2,545	2,700	2,765	2,505
BRPT	Positive	Trading	Negative	Hold	3,770	3,695	3,610	3,855	3,930	3,555
CPIN	Negative	Overbought	Positive	Sell	5,025	4,835	4,625	5,250	5,425	4,555
CTRA	Positive	Trading	Positive	Spec. Buy	920	895	880	935	960	865
EXCL	Positive	Oversold	Negative	Spec. Buy	2,465	2,415	2,365	2,515	2,565	2,325
GOTO	Negative	Trading	Positive	Hold	55	54	53	56	57	52
ICBP	Negative	Trading	Positive	Hold	9,100	8,900	8,675	9,325	9,525	8,550
INCO	Positive	Trading	Negative	Hold	4,260	4,200	4,140	4,320	4,380	4,080
INDF	Negative	Trading	Positive	Hold	7,250	7,100	7,050	7,300	7,450	6,925
INKP	Negative	Trading	Positive	Hold	7,550	7,425	7,375	7,600	7,725	7,250
ISAT	Positive	Trading	Positive	Spec. Buy	1,890	1,850	1,815	1,925	1,965	1,790
ITMG	Negative	Trading	Positive	Hold	22,575	22,500	22,425	22,650	22,725	22,100
JPFA	Negative	Overbought	Positive	Sell	2,475	2,370	2,285	2,560	2,665	2,250
JSMR	Negative	Overbought	Positive	Sell	4,050	3,920	3,840	4,130	4,260	3,780
KLBF	Negative	Trading	Positive	Hold	1,195	1,175	1,160	1,210	1,230	1,140
MAPA	Positive	Trading	Positive	Spec. Buy	615	610	595	630	635	585
MAPI	Negative	Trading	Positive	Hold	1,230	1,210	1,195	1,245	1,265	1,175
MBMA	Positive	Trading	Negative	Hold	590	575	550	615	630	540
MDKA	Positive	Trading	Positive	Spec. Buy	2,290	2,255	2,220	2,325	2,360	2,185
MEDC	Positive	Trading	Negative	Hold	1,395	1,375	1,355	1,415	1,435	1,335
PGAS	Negative	Trading	Positive	Hold	1,695	1,670	1,635	1,730	1,755	1,610
PGEO	Positive	Trading	Negative	Hold	1,325	1,310	1,285	1,350	1,365	1,265
PTBA	Negative	Trading	Positive	Hold	2,325	2,285	2,255	2,355	2,395	2,220
SCMA	Positive	Trading	Negative	Hold	365	355	347	373	383	341
SMGR	Positive	Trading	Negative	Hold	2,580	2,525	2,490	2,615	2,670	2,450
SMRA	Negative	Trading	Negative	Sell	400	387	378	409	422	372
TLKM	Positive	Trading	Positive	Spec. Buy	3,180	3,135	3,080	3,235	3,280	3,030
TOWR	Positive	Trading	Positive	Spec. Buy	545	535	530	550	560	520
UNTR	Negative	Trading	Positive	Hold	26,650	26,200	25,675	27,175	27,625	25,300
UNVR	Negative	Overbought	Positive	Sell	2,075	1,995	1,945	2,125	2,205	1,915



Kiwoom Research Team



HEAD OFFICE

Treasury Tower 27th Floor Unit A, District 8 Kawasan SCBD Lot 28,
Jl.Jend.Sudirman Kav 52-53, Jakarta Selatan 12190

Tel : (021) 5010 5800
Fax : (021) 5010 5820
Email : cs@kiwoom.co.id

PT Kiwoom Sekuritas Indonesia is licensed and supervised by the Financial Services Authority (OJK)

OTHER DISCLOSURES

All Kiwoom's research reports made available to clients are simultaneously available on our own website <http://www.kiwoom.co.id/>. Not all research content is redistributed, e-mailed or made available to third-party aggregators. For all research reports available on a particular stock, please contact your sales representative. Any data discrepancies in this report could be the result of different calculations and/or adjustments.

DISCLAIMER

This report has been prepared and issued by PT Kiwoom Sekuritas Indonesia. Information has been obtained from sources believed to be reliable but Kiwoom Securities do not warrant its completeness or accuracy. Forward-looking information or statements in this report contain information that is based on forecast of future results, estimates of amounts not yet determinable, assumptions, and therefore involve known and unknown risks and uncertainties which may cause the actual results, performance or achievements of their subject matter to be materially different from current expectations. To the fullest extent allowed by law, PT Kiwoom Sekuritas Indonesia shall not be liable for any direct, indirect or consequential losses, loss of profits, damages, costs or expenses incurred or suffered by any person or organization arising from reliance on or use of any information contained on this report. The information that we provide should not be construed in any manner whatsoever as, personalized advice. No mention of a particular security in this report constitutes a recommendation to buy, sell or hold that or any security, or that any particular security, portfolio of securities, transaction or investment strategy is suitable for any specific person. This report is being supplied to you solely for your information and may not be reproduced by, further distributed to or published in whole or in part by, any other person.