



Technical Recommendation

Jakarta Composite Index Range Today

6,762 – 6,745 / 6,538 / 6,092

Support

6,980 – 7,015

Resistance

Published on 13 May 2026



Jakarta Composite Index

JCI slumped 46.72 pts / -0.68% to the 6,858.90 level after surpassing a volatile session last Tuesday (intraday Low: 6,762) as foreigners again recorded a net sell of IDR 799.25 billion. Local investors also seemed nervous ahead of the MSCI rebalancing announcement, which was officially released early this Wednesday, preceding the long-weekend holiday on May 14-15 celebrating the Ascension of Jesus Christ; especially as USD/IDR broke through 17,500. **KIWOOM RESEARCH** must warn investors/traders to adopt a more WAIT & SEE stance while waiting for the market to stabilize, where the Support area could be extended to 6,745; or it may have to close the GAP at the 6,538 / 6,092 levels (which would mean returning almost all of JCI gains that occurred in 2025).

ADVISE: HOLD; WAIT & SEE.



ADRO

Alamtri Resources Indonesia Tbk.



(ADRO). Price successfully breakout resistance and potential to continue uptrend. Strengthening supported by Stochastic indicator golden cross, MACD line golden cross (histogram moving positive again) and volume increasing.

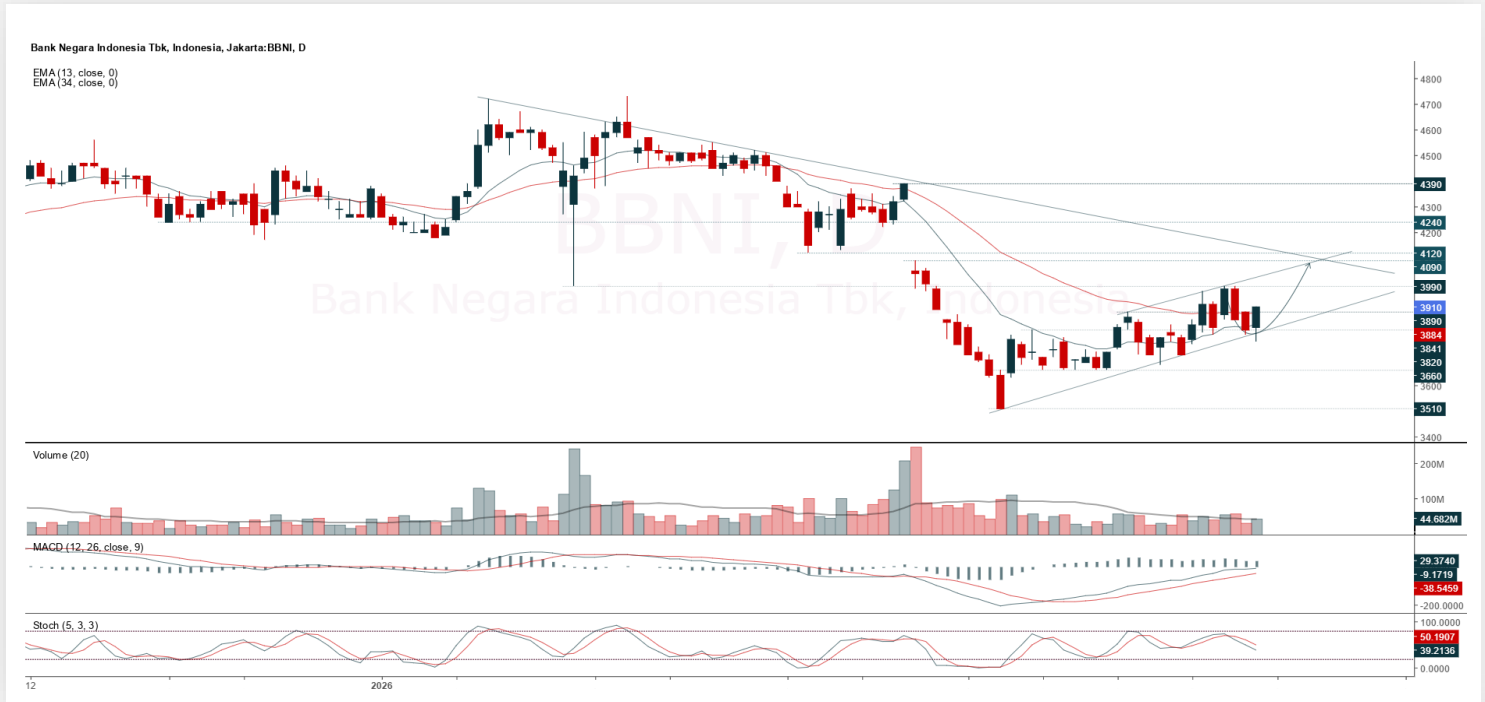
ADVICE: Hold or trading buy.

Entry Buy	Target Price	Support	Cut Loss
2,530 – 2,600	2,680 – 2,760	2,500 – 2,530	2,480



BBNI

Bank Negara Indonesia (Persero) Tbk.



(BBNI). Price successfully rebounded after touching support. Strengthening supported by MACD line indicator moving bullish (histogram moving positive) and volume increasing.

ADVICE: Accumulation buy or buy on support.

Entry Buy	Target Price	Support	Cut Loss
3,810 – 3,910	4,030 – 4,150	3,760 – 3,810	3,740



BRPT

Barito Pacific Tbk.



(BRPT). Price formed another swing low and potential to strengthen again. Strengthening supported by Stochastic indicator potential golden cross (bullish convergence formation), MACD line potential golden cross (histogram moving to positive direction) and volume increased significantly.

ADVICE: Buy on support or trading buy.

Entry Buy	Target Price	Support	Cut Loss
2,200 – 2,280	2,380 – 2,470	2,160 – 2,200	2,140



BUVA

Bukit Uluwatu Villa Tbk.



(BUVA). Price starts to rebound and potential to strengthen again. Strengthening supported by Stochastic indicator potential golden cross, MACD line potential golden cross (histogram moving to positive direction) and volume increasing.

ADVICE: Accumulation buy or buy on weakness.

Entry Buy	Target Price	Support	Cut Loss
1,040 – 1,075	1,120 – 1,165	1,020 – 1,040	1,010

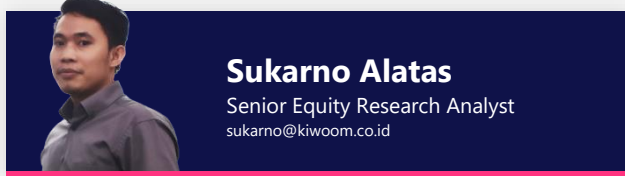


Forecast – Technical Analysis

Ticker	MA5	RSI Rec	MACD Trend	Recomm.	Pivot Point	Support 1	Support 2	Resistance 1	Resistance 2	Stop Loss Level
JCI	Positive	Oversold	Negative	Spec. Buy	6,875	6,800	6,675	7,000	7,100	6,575
AADI	Positive	Oversold	Negative	Spec. Buy	9,275	8,950	8,800	9,425	9,750	8,650
ADMR	Positive	Trading	Negative	Hold	1,810	1,755	1,710	1,855	1,910	1,685
ADRO	Negative	Overbought	Positive	Sell	2,530	2,460	2,390	2,600	2,670	2,355
AKRA	Positive	Trading	Negative	Hold	1,475	1,460	1,425	1,510	1,525	1,400
AMMN	Positive	Oversold	Negative	Spec. Buy	4,105	3,980	3,845	4,240	4,365	3,785
AMRT	Negative	Trading	Positive	Hold	1,445	1,405	1,355	1,495	1,535	1,335
ANTM	Negative	Trading	Negative	Sell	3,635	3,515	3,395	3,755	3,875	3,340
ASII	Positive	Trading	Negative	Hold	5,975	5,825	5,725	6,075	6,225	5,625
BBCA	Negative	Trading	Positive	Hold	6,125	6,075	6,025	6,175	6,225	5,925
BBNI	Positive	Trading	Positive	Spec. Buy	3,855	3,795	3,715	3,935	3,995	3,655
BBRI	Negative	Trading	Positive	Hold	3,210	3,175	3,140	3,245	3,280	3,090
BBTN	Negative	Trading	Negative	Sell	1,365	1,345	1,310	1,400	1,420	1,290
BMRI	Positive	Oversold	Negative	Spec. Buy	4,245	4,215	4,165	4,295	4,325	4,100
BRPT	Positive	Trading	Negative	Hold	2,130	1,935	1,720	2,345	2,540	1,695
BUMI	Positive	Oversold	Negative	Spec. Buy	212	210	206	216	218	203
CPIN	Positive	Trading	Negative	Hold	4,015	3,945	3,895	4,065	4,135	3,835
CUAN	Positive	Oversold	Negative	Spec. Buy	990	915	840	1,065	1,140	830
DEWA	Positive	Trading	Negative	Hold	470	463	452	481	488	445
EMTK	Positive	Oversold	Negative	Spec. Buy	735	725	695	765	775	685
ESSA	Positive	Trading	Negative	Hold	810	790	750	850	870	740
EXCL	Negative	Trading	Negative	Sell	3,060	3,020	2,980	3,100	3,140	2,935
GOTO	Negative	Oversold	Negative	Spec. Buy	50	50	49	51	51	49
HRTA	Negative	Trading	Negative	Sell	2,675	2,610	2,545	2,740	2,805	2,505
ICBP	Negative	Trading	Positive	Hold	7,000	6,900	6,725	7,175	7,275	6,625
INCO	Negative	Trading	Negative	Sell	6,000	5,875	5,650	6,225	6,350	5,575
INDF	Negative	Trading	Negative	Sell	6,950	6,925	6,875	7,000	7,025	6,775
INKP	Positive	Oversold	Negative	Spec. Buy	8,975	8,750	8,475	9,250	9,475	8,325
ISAT	Negative	Overbought	Positive	Sell	2,275	2,200	2,125	2,350	2,425	2,095
ITMG	Positive	Oversold	Negative	Spec. Buy	24,000	23,675	23,075	24,600	24,925	22,725
JPFA	Positive	Trading	Negative	Hold	2,470	2,410	2,320	2,560	2,620	2,285
KLBF	Negative	Oversold	Positive	Spec. Buy	880	860	835	905	925	820
MAPI	Negative	Overbought	Positive	Sell	1,505	1,485	1,475	1,515	1,535	1,450
MBMA	Negative	Oversold	Negative	Spec. Buy	605	595	580	620	630	570
MDKA	Positive	Oversold	Negative	Spec. Buy	2,860	2,810	2,720	2,950	3,000	2,680
MEDC	Positive	Trading	Negative	Hold	1,570	1,550	1,510	1,610	1,630	1,490
PGAS	Negative	Trading	Positive	Hold	1,865	1,840	1,825	1,880	1,905	1,795
PGEO	Positive	Trading	Negative	Hold	1,005	985	965	1,025	1,045	950
PTBA	Positive	Trading	Negative	Hold	2,860	2,835	2,800	2,895	2,920	2,755
SCMA	Positive	Trading	Negative	Hold	246	243	238	251	254	234
SMGR	Negative	Oversold	Positive	Spec. Buy	2,070	2,045	2,010	2,105	2,130	1,975
TLKM	Negative	Trading	Positive	Hold	2,955	2,905	2,815	3,045	3,095	2,770
TOWR	Positive	Trading	Negative	Hold	473	470	465	478	481	458
UNTR	Positive	Oversold	Negative	Spec. Buy	27,000	26,625	25,850	27,775	28,150	25,475
UNVR	Negative	Trading	Positive	Hold	1,795	1,760	1,725	1,830	1,865	1,695
WIFI	Positive	Trading	Negative	Hold	2,250	2,205	2,140	2,315	2,360	2,105



Kiwoom Research Team



HEAD OFFICE

Treasury Tower 27th Floor Unit A, District 8 Kawasan SCBD Lot 28,
Jl.Jend.Sudirman Kav 52-53, Jakarta Selatan 12190

Tel : (021) 5010 5800
Fax : (021) 5010 5820
Email : cs@kiwoom.co.id

PT Kiwoom Sekuritas Indonesia is licensed and supervised by the Financial Services Authority (OJK)

OTHER DISCLOSURES

All Kiwoom's research reports made available to clients are simultaneously available on our own website <http://www.kiwoom.co.id/>. Not all research content is redistributed, e-mailed or made available to third-party aggregators. For all research reports available on a particular stock, please contact your sales representative. Any data discrepancies in this report could be the result of different calculations and/or adjustments.

DISCLAIMER

This report has been prepared and issued by PT Kiwoom Sekuritas Indonesia. Information has been obtained from sources believed to be reliable but Kiwoom Securities do not warrant its completeness or accuracy. Forward-looking information or statements in this report contain information that is based on forecast of future results, estimates of amounts not yet determinable, assumptions, and therefore involve known and unknown risks and uncertainties which may cause the actual results, performance or achievements of their subject matter to be materially different from current expectations. To the fullest extent allowed by law, PT Kiwoom Sekuritas Indonesia shall not be liable for any direct, indirect or consequential losses, loss of profits, damages, costs or expenses incurred or suffered by any person or organization arising from reliance on or use of any information contained on this report. The information that we provide should not be construed in any manner whatsoever as, personalized advice. No mention of a particular security in this report constitutes a recommendation to buy, sell or hold that or any security, or that any particular security, portfolio of securities, transaction or investment strategy is suitable for any specific person. This report is being supplied to you solely for your information and may not be reproduced by, further distributed to or published in whole or in part by, any other person.